



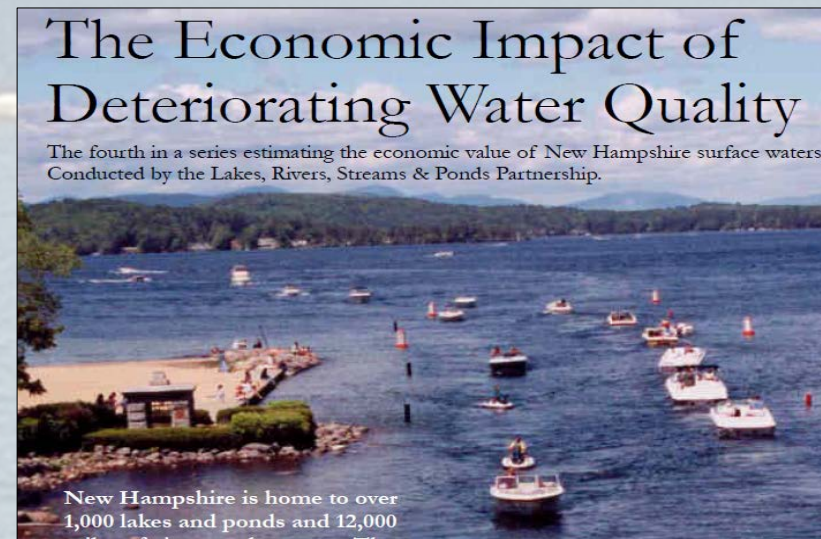
Legislative Report on Clean Water Funding Due January 15, 2017

Fall 2016 Stakeholder Meetings

**State of Vermont
August 31, 2016 – October 20, 2016**

Why We Need Clean Water

- **Provide for the human use of water resources**
 - Drinking water
- **Support Tourism, at annual spending of \$2.5 billion**
 - For example, Lake Champlain a key attraction for visitors
 - Second home-owners in towns bordering the Lake spend \$150 million annually
 - Overnight visitors in Champlain Valley spend over \$300 million annually
 - Day visitors spend \$30 million annually
- **Maintain Property Values**
- **Support the Vermont State Brand**



Meeting Agenda

- Introductions & Agenda Review
- Vermont Clean Water Act & EPA TMDL
(Total Maximum Daily Limit for phosphorus)
- Legislative Report
- Cost Estimates
- Revenue Options
- Discussion

Act 64 Legislative Report

2015 Act 64, Sec. 40. STATE TREASURER REPORT ON LONG-TERM FINANCING OF STATEWIDE WATER QUALITY IMPROVEMENT

On or before January 15, 2017, the State Treasurer, after consultation with the Secretary of Administration, the Commissioner of Environmental Conservation, and the Commissioner of Taxes, shall submit ... a recommendation for financing water quality improvement programs in the State.

Act 64, Section 4: Legislative Report: Funding Clean Water Improvements Statewide

Recommend long-term funding sources for Clean Water Fund.

Recommendations shall Include:

- (1) Proposed revenue sources
- (2) Recommendation for incentivizing Best Management Practices
- (3) Estimated amount of revenue to be generated by source
- (4) Summary of how each source will be administered, collected and enforced
- (5) Assessment of whether the State should use bonds to finance water quality improvements
- (6) Legislative proposal to implement each of the proposed revenue sources

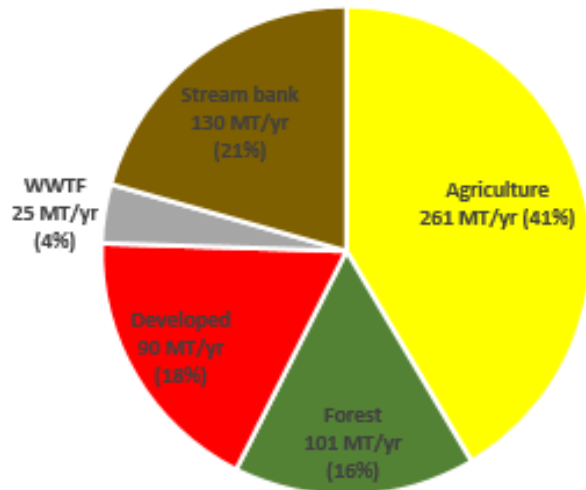
Investing in Clean Water Legislative Report Timeline



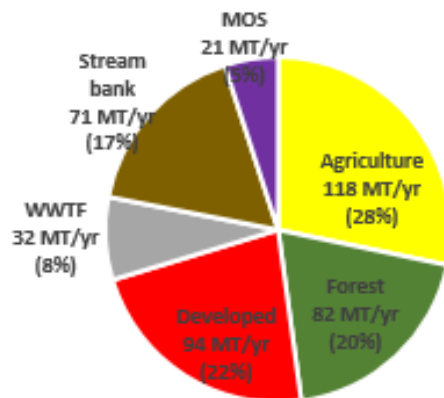
Land Uses Can Harm Our Waters



Base Load
631 Metric Tons/Year



Vermont Reduction
Required = 213 mt/yr (34%)



TMDL Loading Capacity and Allocations
418 Metric Tons/yr

34% phosphorus
reduction over
20 years



“All In” Approach

Wastewater
Treatment



Developed
Land ≥ 3 acres



Forestry



River
Channels



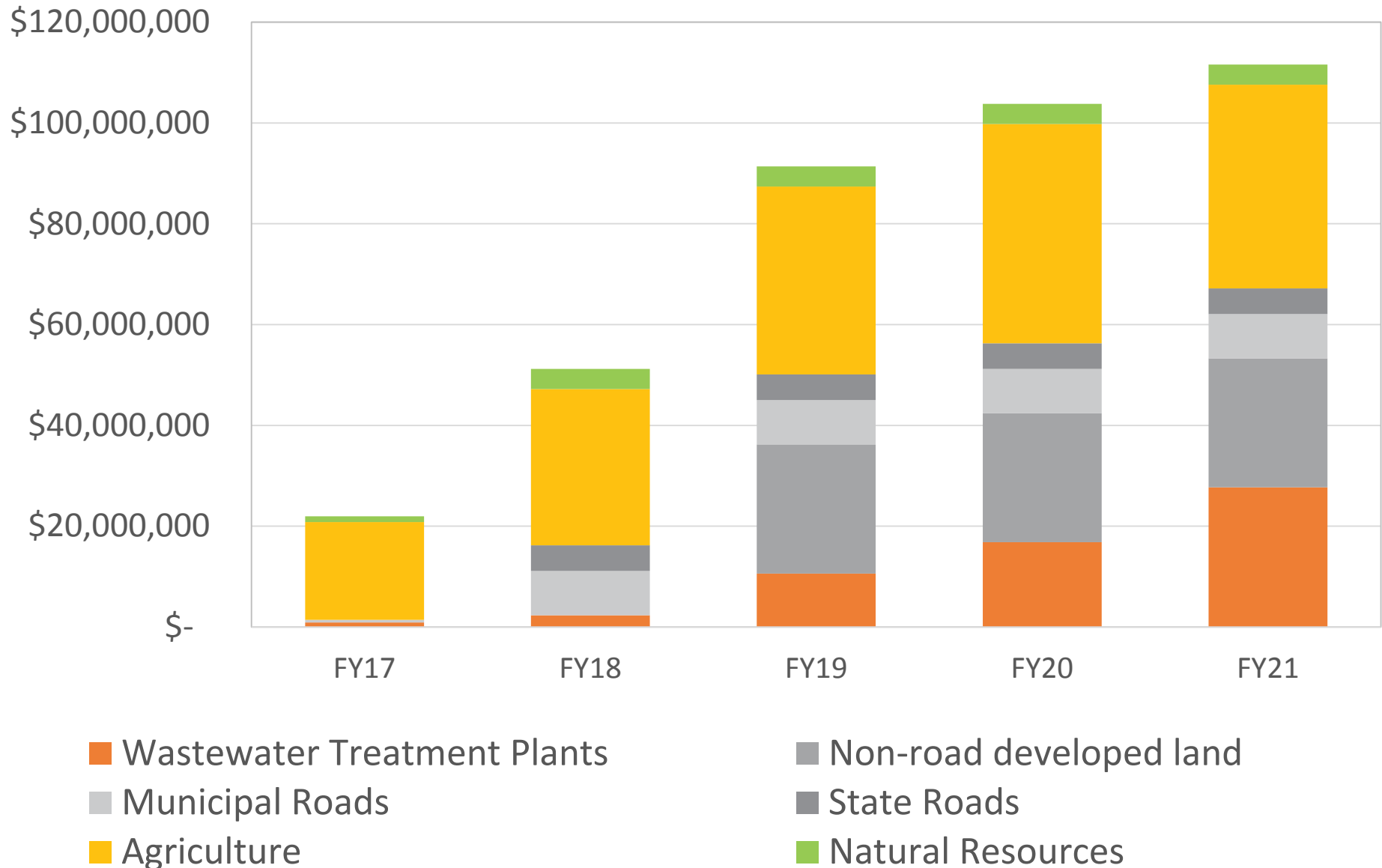
Roads



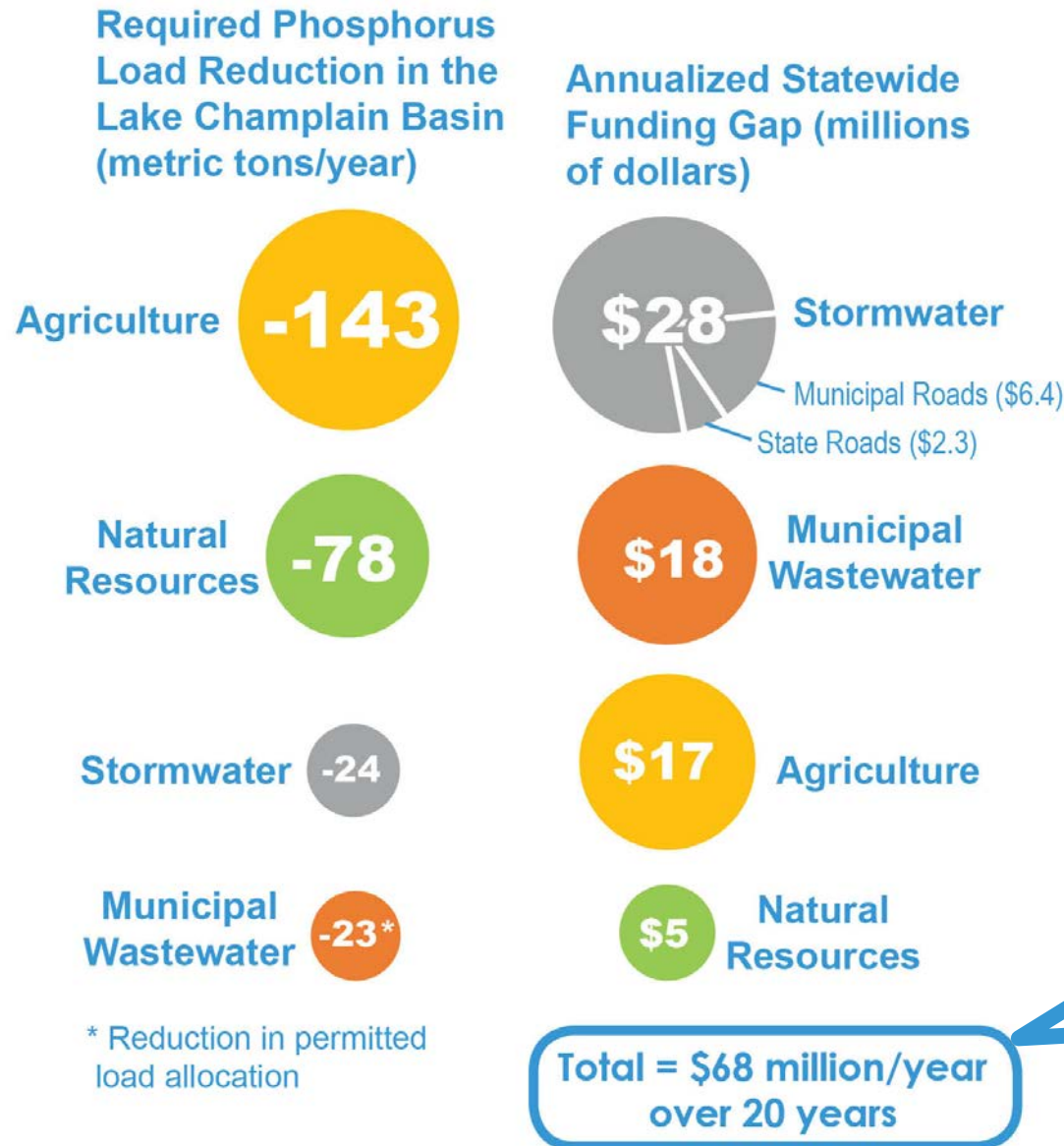
Agriculture



Lake Champlain TMDL & Clean Water Act Estimated Annual Implementation Costs



The Cost of Clean Water



The background of the slide is a scenic photograph of a coastal landscape. In the foreground, there is a body of water with a sandy beach. In the middle ground, there are rolling hills or mountains. The sky is filled with soft, white clouds. The overall tone is calm and natural.

Revenue Sources

Summary of Revenue Sources and
Revenue Criteria Exercise

Revenue Criteria Exercise

Criteria	Points
Revenue Potential	
Predictability	
Sufficiency	
Effect on Outside Dollars	
Economic Impact	
Nexus to Water Quality	
Promotes Mitigation	
Administration & Compliance	
Accountability	
Geographic Distribution	
Income Equity	
Other Criteria or Considerations	

Discussion and Next Steps

<http://dec.vermont.gov/watershed/cwi/cwf/future>

