

Figure 1 Statewide reclassification candidates

Table 1 Statewide reclassification candidates

County	Map ID	Waterbody	Latitude	Longitude	Type	Candidate	Watershed acres	Lake acres	River miles	Towns
BENNINGTON	1	Cardinal Brook 0.1, 0.1, 1.1	42.779	-73.087	River	A(1)	725.9		4.6	Stamford
WINDHAM	2	Whetstone Brook 10.7	42.877	-72.690	River	A(1)	2630.8		8.6	Marlboro
WINDHAM	3	RAPONDA	42.875	-72.818	Lake	A(1)	578.3	123.8		Wilmington
WINDHAM	4	Marlboro Branch 1.9	42.915	-72.715	River	A(1)	10626.6		39.6	Newfane, Marlboro
WINDHAM	5	Rock River 1.5	42.948	-72.666	River	A(1)	35136.2		123.0	Wilmington, Wardsboro, Dover, Marlboro, Newfane
WINDHAM	6	Rock River 10.8	42.965	-72.808	River	A(1)	696.4		3.8	Wardsboro, Dover
WINDHAM	7	Waite Brook 0.8	43.016	-72.834	River	A(1)	2233.5		10.2	Dover, Wardsboro
WINDHAM	8	Bull Creek 2.0	43.126	-72.568	River	A(1)	5645.8		27.2	Westminster, Townshend, Athens
WINDHAM	9	COLE	43.148	-72.806	Lake	A(1)	163.3	41.4		Londonderry, Jamaica
WINDHAM	10	Howe Brook 1.6	43.157	-72.643	River	A(1)	2621.7		12.5	Windham, Grafton
WINDSOR	11	Great Brook 6.9	43.347	-72.610	River	A(1)	1950.4		5.7	Baltimore, Chester, Cavendish
WINDSOR	12	Whitney Brook 0.3	43.415	-72.652	River	A(1)	815.7		3.7	Cavendish, Ludlow
WINDSOR	13	Twenty Mile Stream 0.6	43.394	-72.602	River	A(1)	9462.8		42.5	Plymouth, Reading, Ludlow, Cavendish
WINDSOR	14	RESCUE	43.453	-72.703	Lake	A(1)	22063.9	189.2		Reading, Mount Holly, Ludlow, Shrewsbury, Plymouth
WINDSOR	15	Barnard Brook 2.5	43.652	-72.530	River	A(1)	12064.6		49.5	Woodstock, Barnard, Pomfret
RUTLAND, ADDISON	16	Sugar Hollow Brook, 3.0, 4.2	43.730	-73.020	River	A(1)	6302.6		28.8	Brandon, Pittsford, Goshen, Chittenden
ADDISON, RUTLAND	17	Leicester Hollow Brook 0.1	43.843	-73.042	River	A(1)	98.0		0.3	Goshen, Brandon, Leicester
ORANGE, WINDSOR	18	Riford Brook 2.6	43.944	-72.751	River	A(1)	723.4		3.3	Rochester, Braintree

<i>County</i>	<i>Map ID</i>	<i>Waterbody</i>	<i>Latitude</i>	<i>Longitude</i>	<i>Type</i>	<i>Candidate</i>	<i>Watershed acres</i>	<i>Lake acres</i>	<i>River miles</i>	<i>Towns</i>
ORANGE	19	Middle Brook 6.3	43.952	-72.218	River	A(1)	1736.2		6.3	West Fairlee
CALEDONIA	20	HARVEYS	44.294	-72.137	Lake	A(1)	5373.0	357.2		Ryegate, Barnet
CALEDONIA	21	Red Brook 0.2, 1.2	44.248	-72.206	River	A(1)	2304.9		7.5	Peacham, Groton
LAMOILLE, WASHINGTON	22	Gold Brook 3.0	44.448	-72.658	River	A(1)	1459.6		12.4	Worcester, Stowe
CALEDONIA	23	COLES	44.508	-72.216	Lake	A(1)	742.8	106.8		Stannard, Walden
ORLEANS	24	CASPIAN	44.585	-72.307	Lake	A(1)	4401.9	789.8		Greensboro
ESSEX	25	Rich Brook 0.1	44.656	-71.594	River	A(1)	1173.9		2.8	Maidstone
ESSEX	26	MAIDSTONE	44.650	-71.646	Lake	A(1)	3047.9	755.8		Granby, Ferdinand, Maidstone
ESSEX	27	West Branch Moose River 0.1	44.634	-71.812	River	A(1)	2552.7		12.2	East Haven
ORLEANS	28	SHADOW (GLOVER)	44.669	-72.227	Lake	A(1)	3413.5	217.3		Glover
CALEDONIA	29	Calendar Brook Trib 22 0.4	44.659	-72.095	River	A(1)	568.6		2.0	Sheffield
LAMOILLE	30	SOUTH (EDEN)	44.687	-72.528	Lake	A(1)	1513.8	112.5		Hyde Park, Eden
LAMOILLE	31	Wild Brook 0.3	44.666	-72.614	River	A(1)	4003.5		22.5	Belvidere, Johnson, Eden
CALEDONIA, ORLEANS	32	NEWARK	44.717	-71.982	Lake	A(1)	518.8	158.2		Westmore, Newark
ORLEANS	33	Shalney Branch 1.3	44.734	-72.391	River	A(1)	1235.4		4.9	Albany Village, Albany, Lowell
CALEDONIA, ORLEANS	34	WILLOUGHBY	44.748	-72.060	Lake	A(1)	12758.4	1733.6		Brownington, Sutton, Westmore
ORLEANS	35	ECHO (CHARTN)	44.859	-71.994	Lake	A(1)	15121.6	546.5		Holland, Charleston, Morgan
ORLEANS	36	SEYMOUR	44.890	-71.979	Lake	A(1)	12892.6	1777.2		Charleston, Holland, Morgan

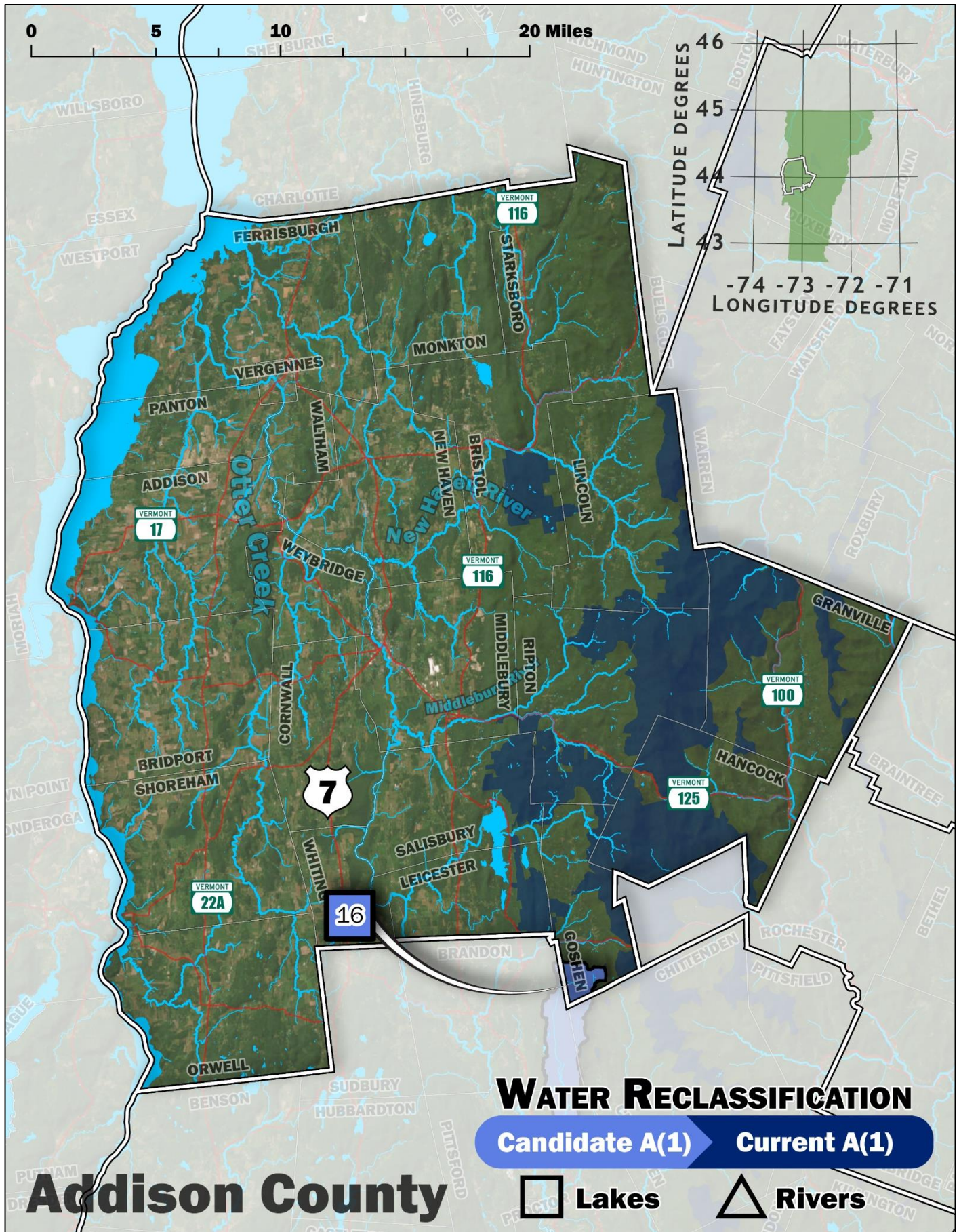


Figure 2 Reclassification candidates for Bennington County.

Table 2 Reclassification candidates for Addison County.

Map ID	Waterbody	Latitude	Longitude	Type	Candidate	Watershed acres	Lake acres	River miles	Towns
16	Sugar Hollow Brook, 3.0, 4.2	43.730	-73.020	River	A(1)	6302.6		28.8	Brandon, Pittsford, Goshen, Chittenden

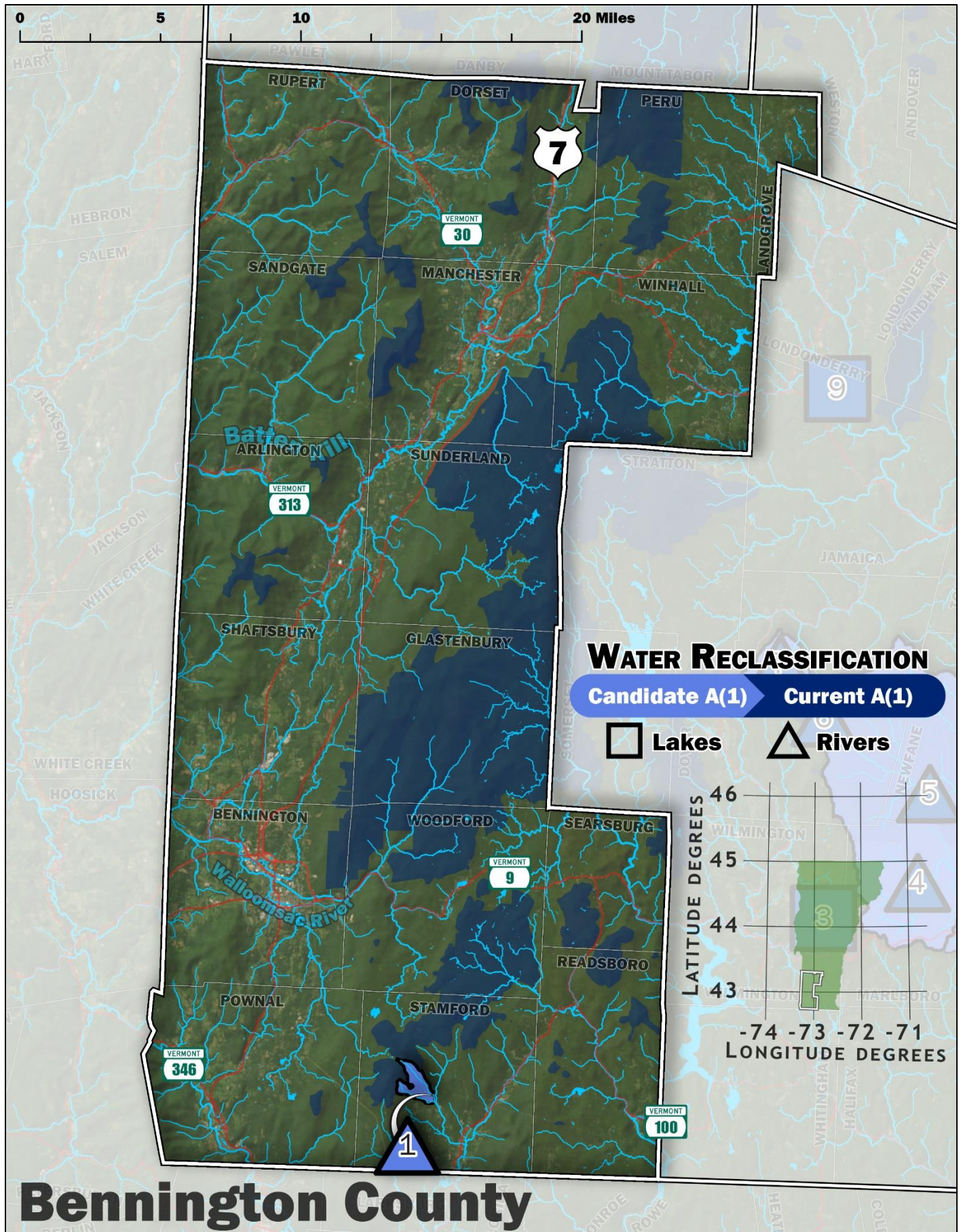


Figure 3 Reclassification candidates for Bennington County.

Table 3 Reclassification candidates for Bennington County.

Map ID	Waterbody	Latitude	Longitude	Type	Candidate	Watershed acres	Lake acres	River miles	Towns
1	Cardinal Brook 0.1, 1.1	42.779	-73.087	River	A(1)	725.9		4.6	Stamford

WATER RECLASSIFICATION Caledonia County

Candidate A(1) Current A(1)

Lakes Rivers

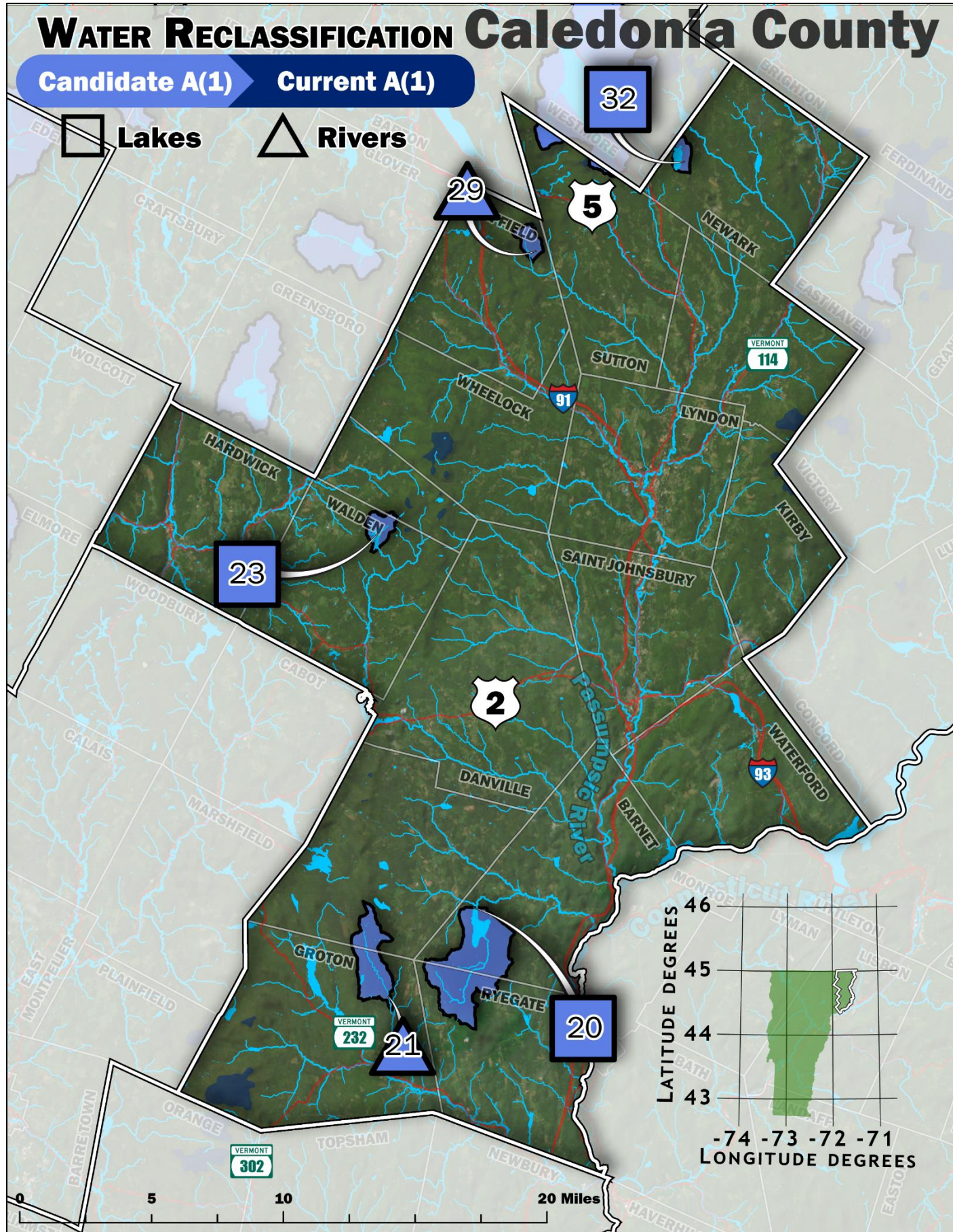


Figure 4 Reclassification candidates for Caledonia County.

Table 4 Reclassification candidates for Caledonia County.

Map ID	Waterbody	Latitude	Longitude	Type	Candidate	Watershed acres	Lake acres	River miles	Towns
20	HARVEYS	44.294	-72.137	Lake	A(1)	5373.0	357.2		Ryegate, Barnet
21	Red Brook 0.2, 1.2	44.248	-72.206	River	A(1)	2304.9		7.5	Peacham, Groton
23	COLES	44.508	-72.216	Lake	A(1)	742.8	106.8		Stannard, Walden
29	Calendar Brook Trib 22 0.4	44.659	-72.095	River	A(1)	568.6		2.0	Sheffield
32	NEWARK	44.717	-71.982	Lake	A(1)	518.8	158.2		Westmore, Newark

Table 5 Reclassification candidates for Essex County.

Map ID	Waterbody	Latitude	Longitude	Type	Candidate	Watershed acres	Lake acres	River miles	Towns
25	Rich Brook 0.1	44.656	-71.594	River	A(1)	1173.9		2.8	Maidstone
26	MAIDSTONE	44.650	-71.646	Lake	A(1)	3047.9	755.8		Granby, Ferdinand, Maidstone
27	West Branch Moose River 0.1	44.634	-71.812	River	A(1)	2552.7		12.2	East Haven

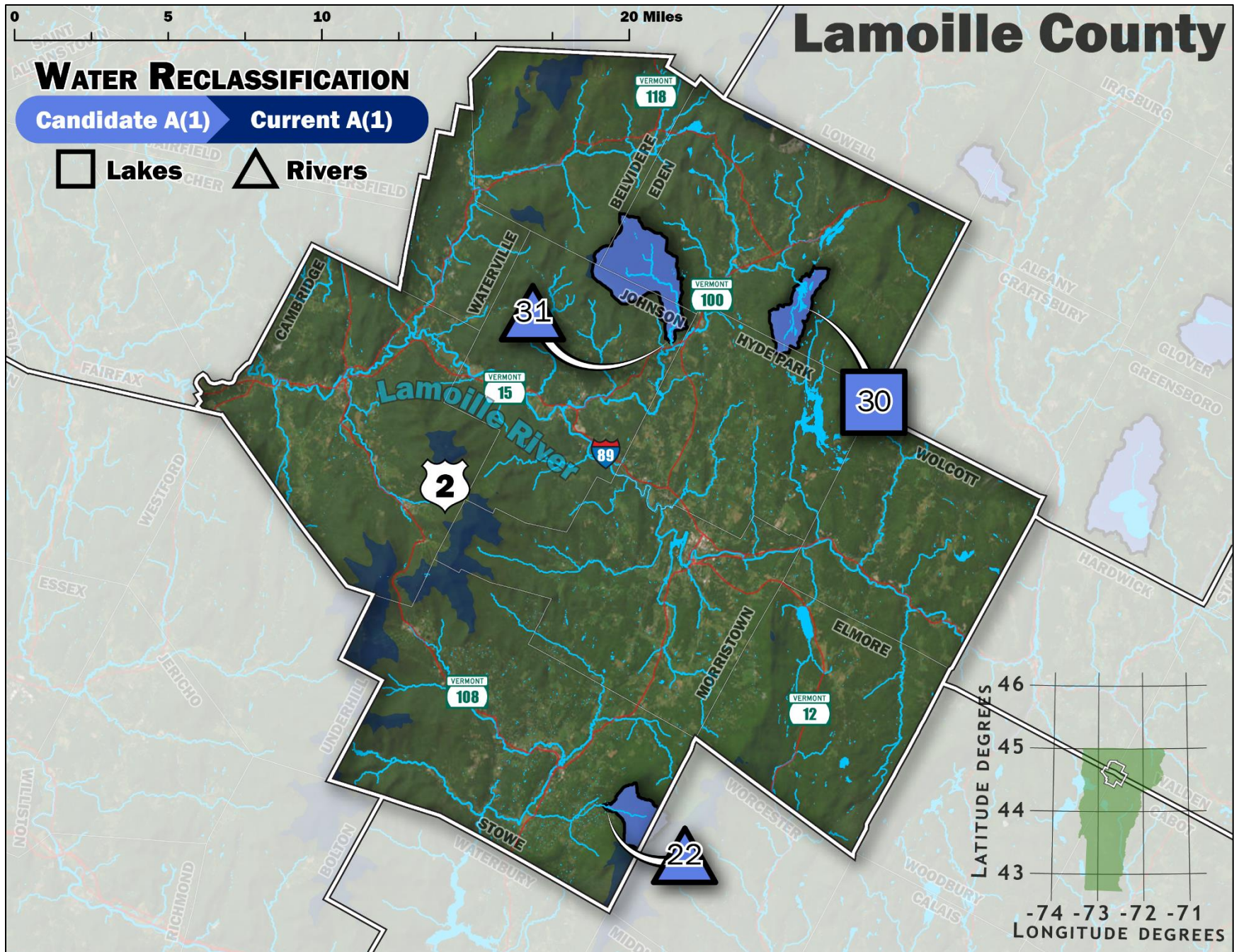


Figure 6 Reclassification candidates for Lamoille County.

Table 6 Reclassification candidates for Lamoille County.

Map ID	Waterbody	Latitude	Longitude	Type	Candidate	Watershed acres	Lake acres	River miles	Towns
22	Gold Brook 3.0	44.448	-72.658	River	A(1)	1459.6		12.4	Worcester, Stowe
30	SOUTH (EDEN)	44.687	-72.528	Lake	A(1)	1513.8	112.5		Hyde Park, Eden
31	Wild Brook 0.3	44.666	-72.614	River	A(1)	4003.5		22.5	Belvidere, Johnson, Eden

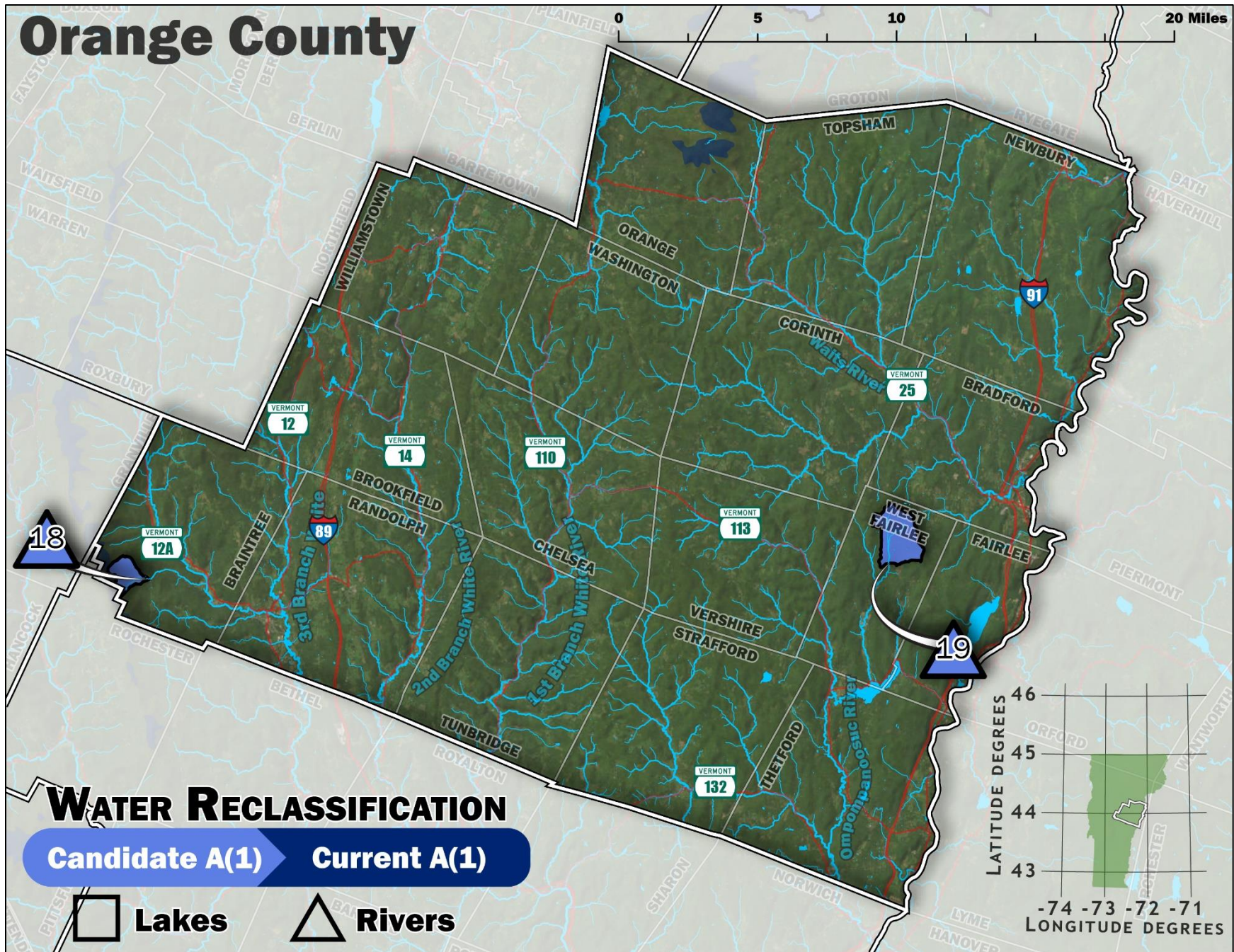


Figure 7 Reclassification candidates for Orange County.

Table 7 Reclassification candidates for Orange County.

Map ID	Waterbody	Latitude	Longitude	Type	Candidate	Watershed acres	Lake acres	River miles	Towns
18	Riford Brook 2.6	43.944	-72.751	River	A(1)	723.4		3.3	Rochester, Braintree
19	Middle Brook 6.3	43.952	-72.218	River	A(1)	1736.2		6.3	West Fairlee

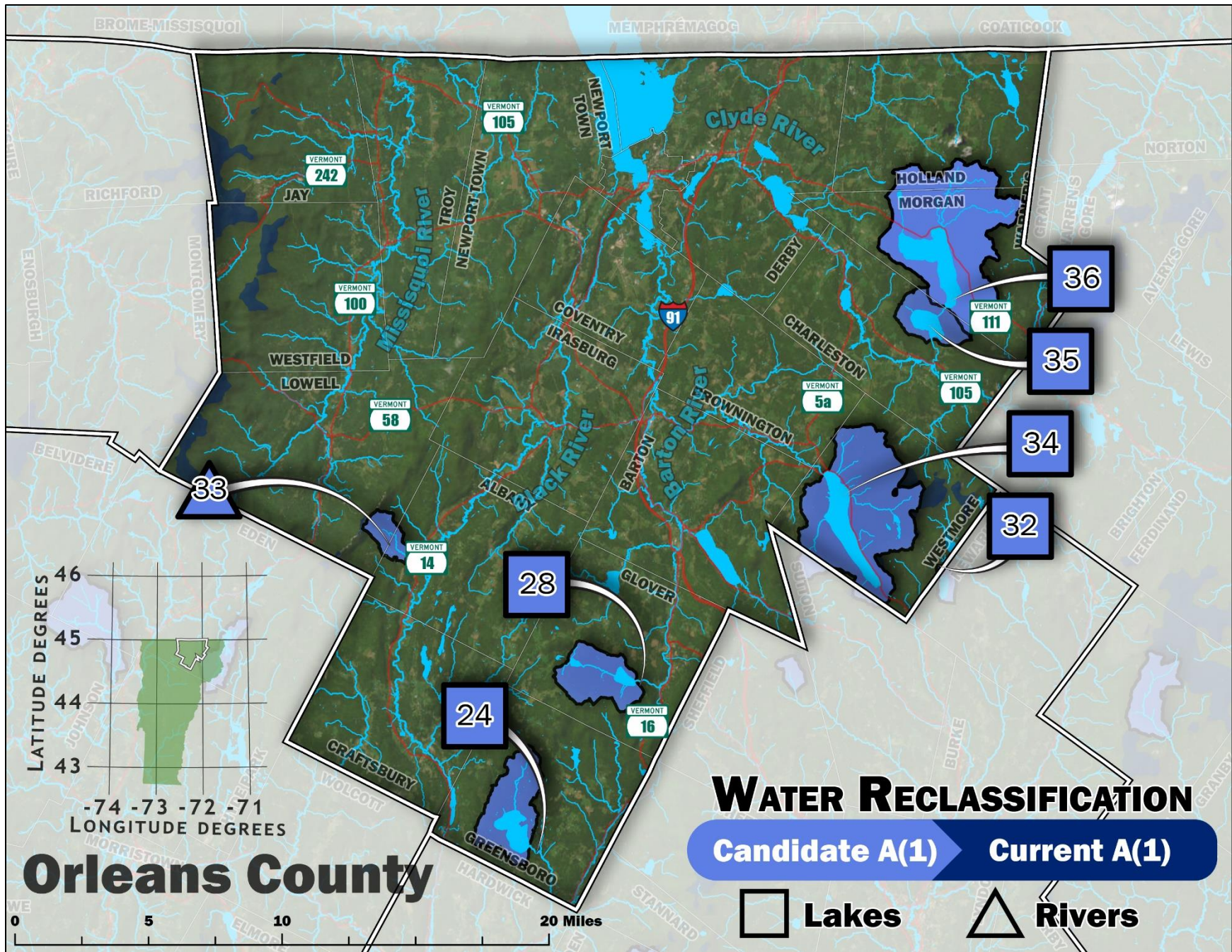


Figure 8 Reclassification candidates for Orleans County.

Table 8 Reclassification candidates for Orleans County.

Map ID	Waterbody	Latitude	Longitude	Type	Candidate	Watershed acres	Lake acres	River miles	Towns
24	CASPIAN	44.585	-72.307	Lake	A(1)	4401.9	789.8		Greensboro
28	SHADOW (GLOVER)	44.669	-72.227	Lake	A(1)	3413.5	217.3		Glover
32	NEWARK	44.717	-71.982	Lake	A(1)	518.8	158.2		Westmore, Newark
33	Shalney Branch 1.3	44.734	-72.391	River	A(1)	1235.4		4.9	Albany Village, Albany, Lowell
34	WILLOUGHBY	44.748	-72.060	Lake	A(1)	12758.4	1733.6		Brownington, Sutton, Westmore
35	ECHO (CHARTN)	44.859	-71.994	Lake	A(1)	15121.6	546.5		Holland, Charleston, Morgan
36	SEYMOUR	44.890	-71.979	Lake	A(1)	12892.6	1777.2		Charleston, Holland, Morgan

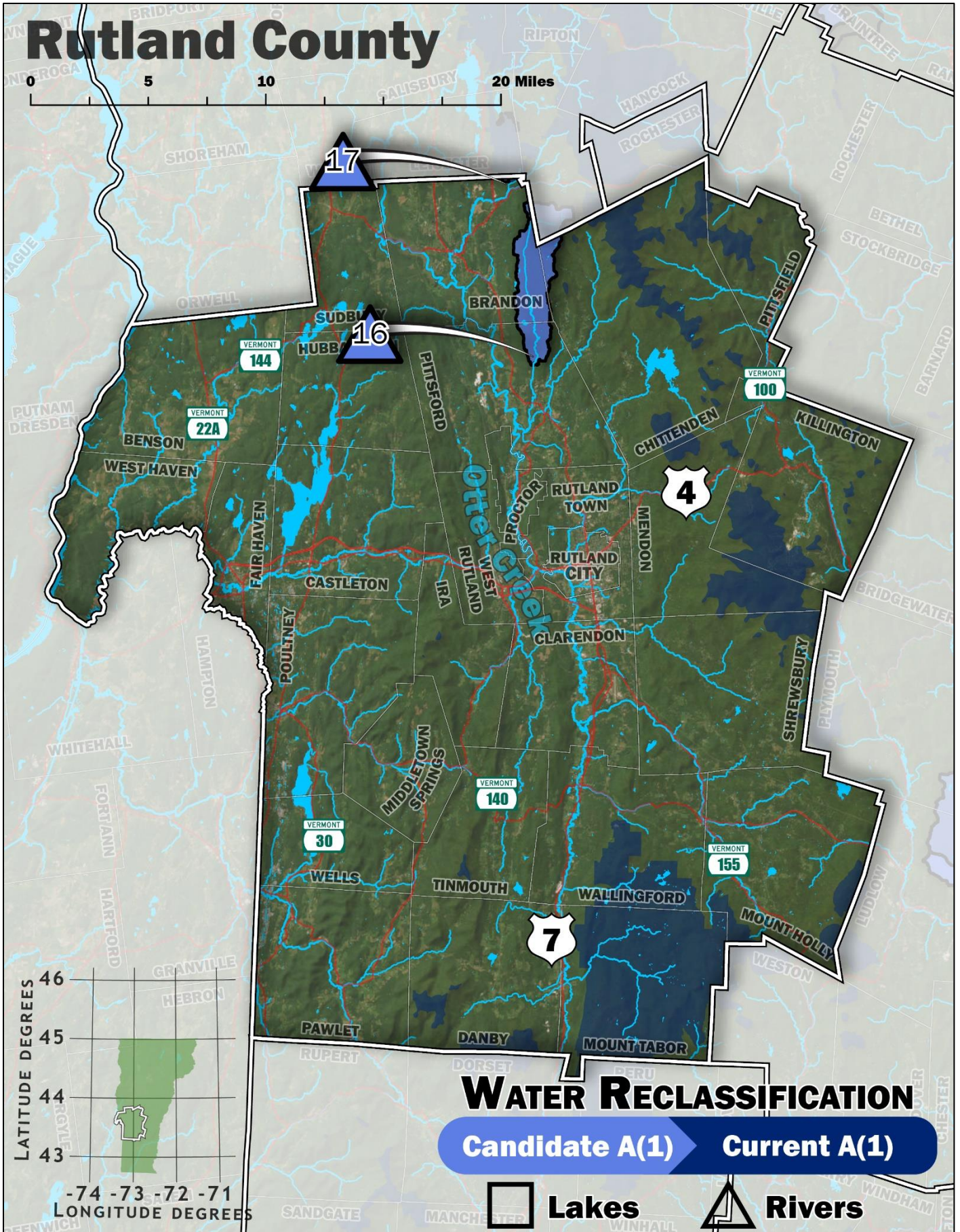


Figure 9 Reclassification candidates for Rutland County.

Table 9 Reclassification candidates for Rutland County.

Map ID	Waterbody	Latitude	Longitude	Type	Candidate	Watershed acres	Lake acres	River miles	Towns
16	Sugar Hollow Brook, 3.0, 4.2	43.730	-73.020	River	A(1)	6302.6		28.8	Brandon, Pittsford, Goshen, Chittenden
17	Leicester Hollow Brook 0.1	43.843	-73.042	River	A(1)	98.0		0.3	Goshen, Brandon, Leicester

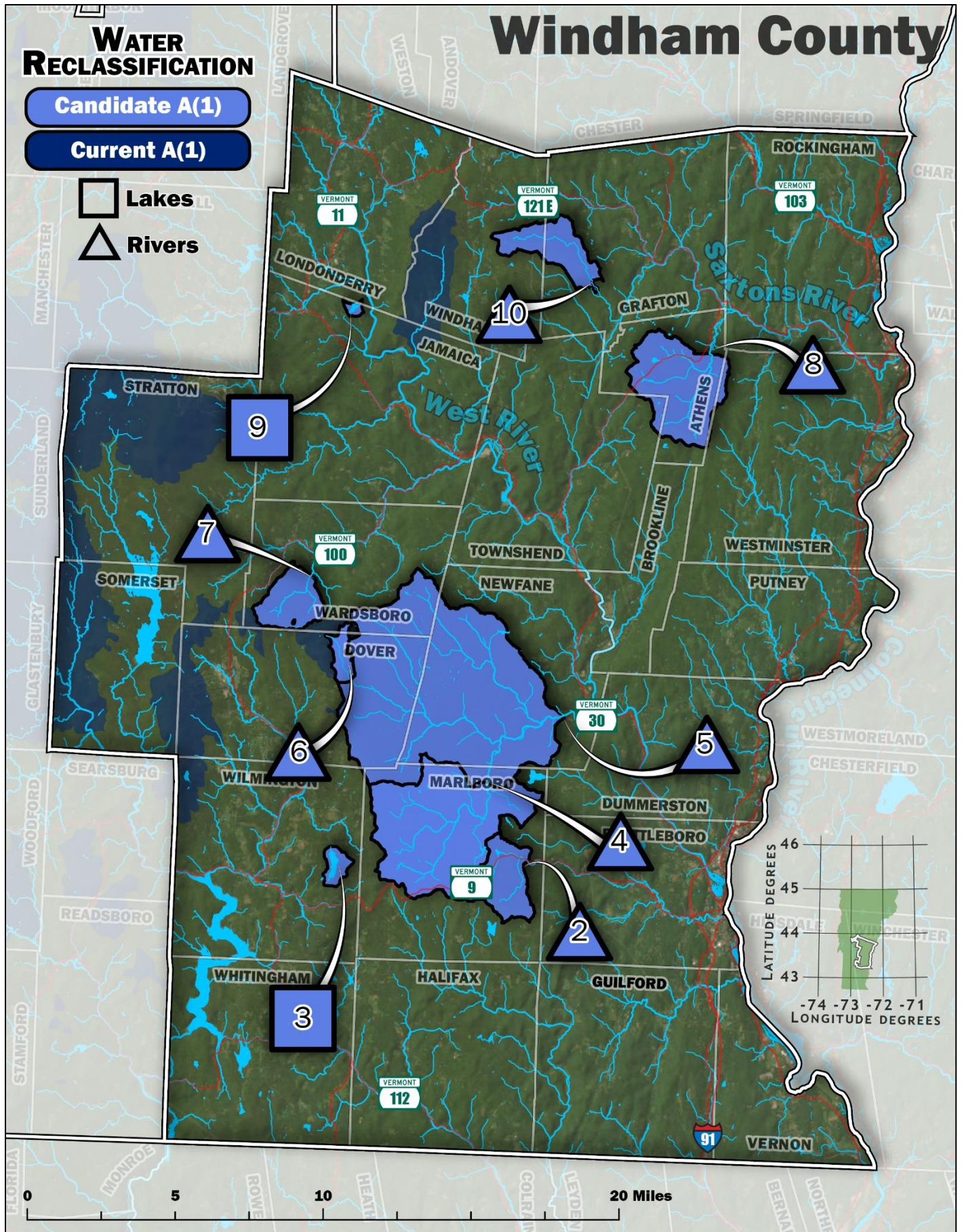


Figure 10 Reclassification candidates for Windham County.

Table 10 Reclassification candidates for Windham County.

Map ID	Waterbody	Latitude	Longitude	Type	Candidate	Watershed acres	Lake acres	River miles	Towns
2	Whetstone Brook 10.7	42.877	-72.690	River	A(1)	2630.8		8.6	Marlboro
3	RAPONDA	42.875	-72.818	Lake	A(1)	578.3	123.8		Wilmington
4	Marlboro Branch 1.9	42.915	-72.715	River	A(1)	10626.6		39.6	Newfane, Marlboro
5	Rock River 1.5	42.948	-72.666	River	A(1)	35136.2		123.0	Wilmington, Wardsboro, Dover, Marlboro, Newfane
6	Rock River 10.8	42.965	-72.808	River	A(1)	696.4		3.8	Wardsboro, Dover
7	Waite Brook 0.8	43.016	-72.834	River	A(1)	2233.5		10.2	Dover, Wardsboro
8	Bull Creek 2.0	43.126	-72.568	River	A(1)	5645.8		27.2	Westminster, Townshend, Athens
9	COLE	43.148	-72.806	Lake	A(1)	163.3	41.4		Londonderry, Jamaica
10	Howe Brook 1.6	43.157	-72.643	River	A(1)	2621.7		12.5	Windham, Grafton

Windsor County Water RECLASSIFICATION

Candidate A(1)

Current A(1)

□ Lakes

△ Rivers

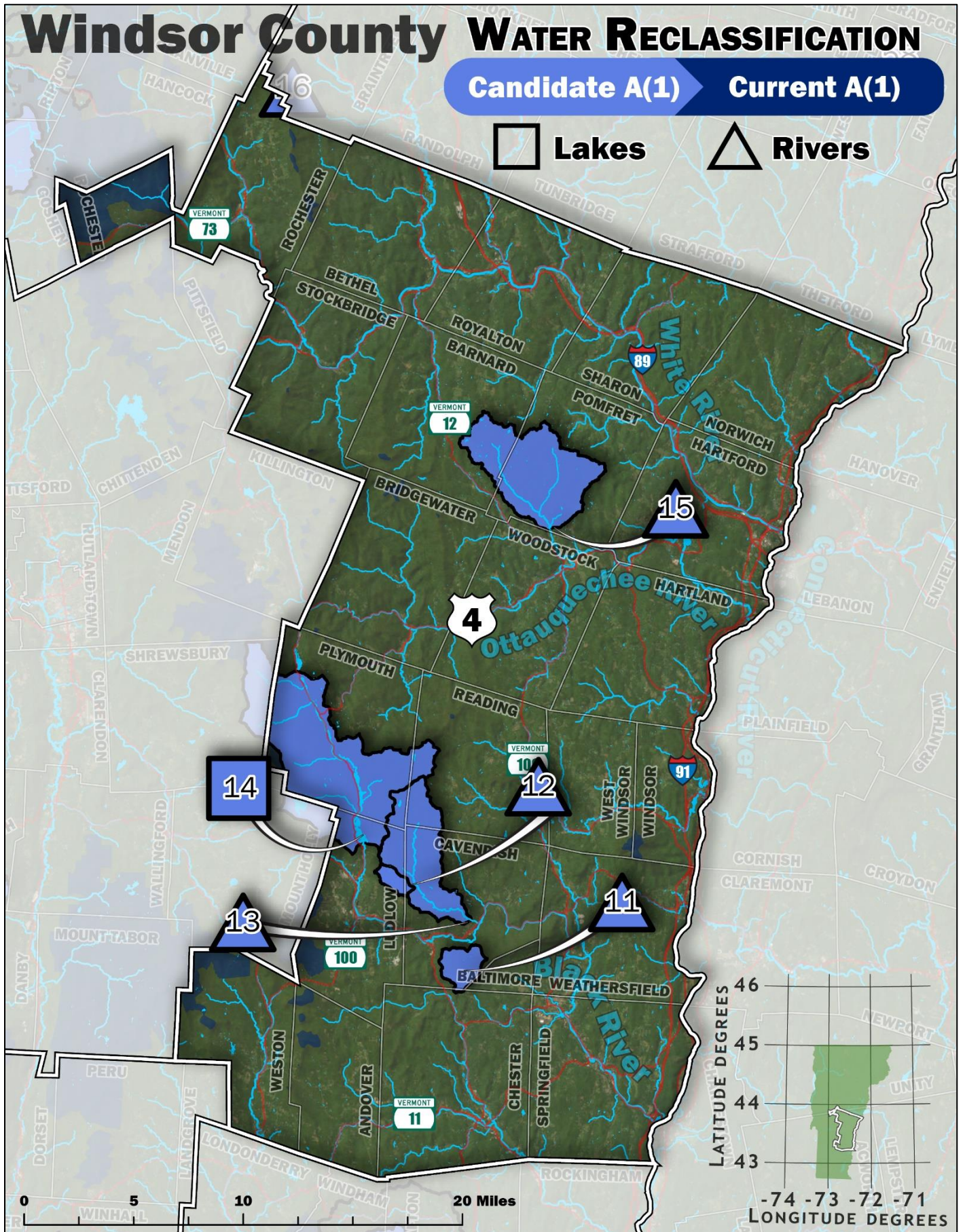


Figure 11 Reclassification candidates for Windsor County.

Table 11 Reclassification candidates for Windsor County.

Map ID	Waterbody	Latitude	Longitude	Type	Candidate	Watershed acres	Lake acres	River miles	Towns
11	Great Brook 6.9	43.347	-72.610	River	A(1)	1950.4		5.7	Baltimore, Chester, Cavendish
12	Whitney Brook 0.3	43.415	-72.652	River	A(1)	815.7		3.7	Cavendish, Ludlow
13	Twenty Mile Stream 0.6	43.394	-72.602	River	A(1)	9462.8		42.5	Plymouth, Reading, Ludlow, Cavendish
14	RESCUE	43.453	-72.703	Lake	A(1)	22063.9	189.2		Reading, Mount Holly, Ludlow, Shrewsbury, Plymouth
15	Barnard Brook 2.5	43.652	-72.530	River	A(1)	12064.6		49.5	Woodstock, Barnard, Pomfret