

# Surficial Geologic Map and Cross-Sections of the Waterbury 7.5-minute Quadrangle, Vermont

Stephen F. Wright\*, Richard K. Dunn\*\*, and George E. Springston\*\*

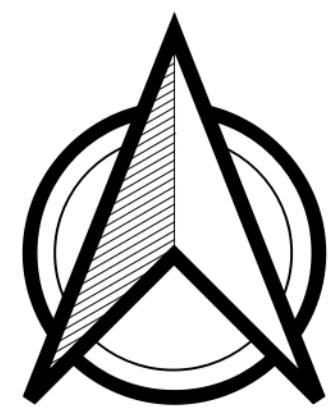
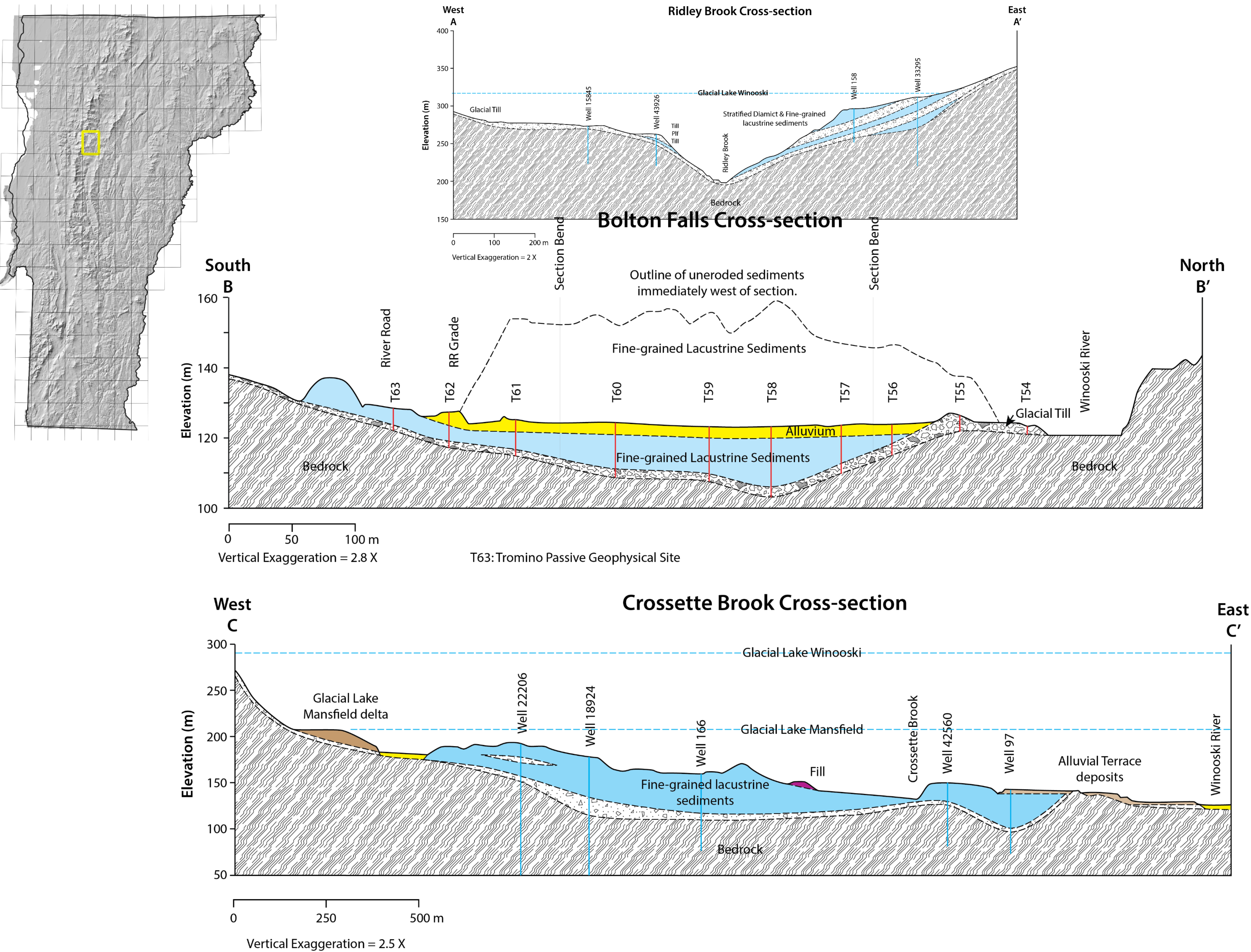
\*Department of Geography and Geosciences; University of Vermont; Burlington, VT

\*\*Department of Earth and Environmental Sciences; Norwich University; Northfield, VT  
2023

## Explanation



Note: Geologic units and contacts in the Mad River Watershed (areas south of the red-dashed line) were modified from Dunn, Springston, and Donahue (2007) by the principal author utilizing landforms visible on the LiDAR basemap.



VERMONT  
AGENCY OF NATURAL RESOURCES  
Vermont Geological Survey



Field assistance in the Ridley Brook and Crossette Brook valleys provided by University of Vermont students: Elliott Bloom, Cora Deininger, Zoe Flanzer, Sean O'Neil, Samantha Rassias, and Tyler Sullivan.

Research supported by the U.S. Geological Survey, National Cooperative Geologic Mapping Program, under USGS award number G22AC00312. The views and conclusions contained in this document are those of the authors and should not be interpreted as necessarily representing the official policies, either expressed or implied, of the U.S. Government.