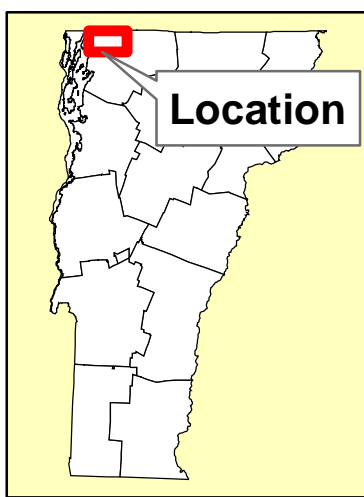


Distance To Stream

- > 30 meters
- 0 to 30 meters
- Highgate Boundary
- Minor Roads
- Major Roads
- Interstates
- Water Bodies

EXPLANATION

This plate shows distance to streams and large water bodies. The streams and water bodies are from the Water_VHDCARTO line and polygon layers from the Vermont Center for Geographic Information. This is used as a component of the map of potentially unstable slopes shown on Plate 5. The map is divided into classes as follows:
Class 1 - > 30 meters
Class 2 - 0 to 30 meters

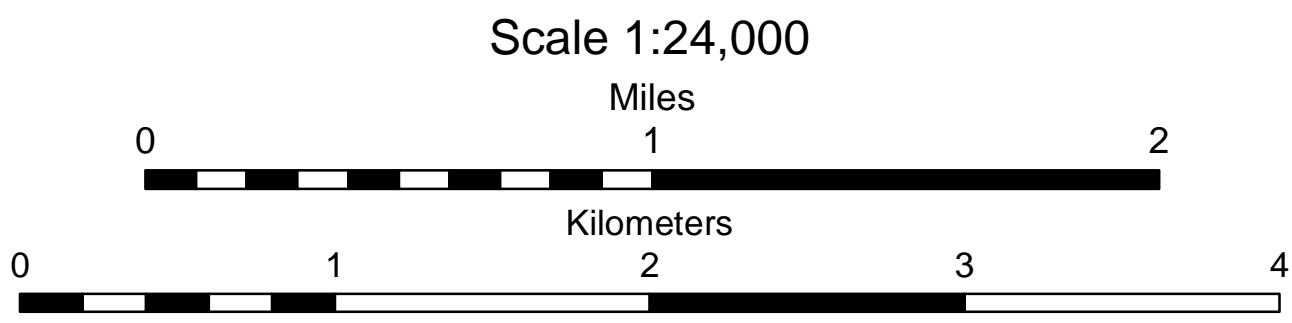


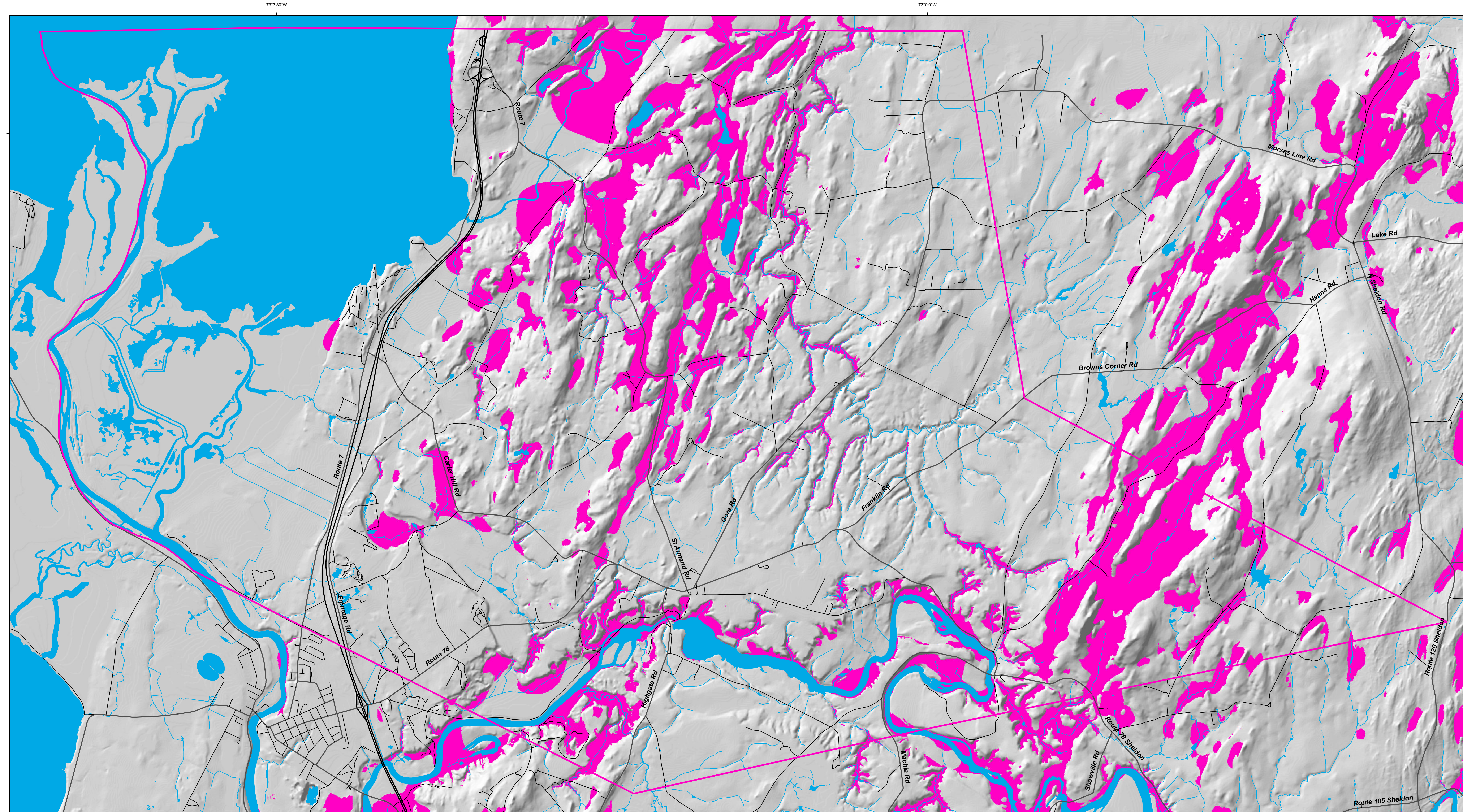
Base map layers from Vermont Center for Geographic Information. Coordinate System: Vermont State Plane, meters, NAD 83. Geographic coordinates shown at topo corners are in NAD 83.

Digital cartography by George Springston, June 30, 2016. Research supported by the Vermont Geological Survey, Dept. of Environmental Conservation, VT ANR.

The views and conclusions contained in this document are those of the authors and should not be interpreted as necessarily representing the official policies, either expressed or implied, of the State of Vermont.

Published by:
Vermont Geological Survey, Marjorie Gale,
State Geologist
Department of Environmental Conservation
1 National Life Drive, Davis 2
Montpelier, VT 05620-3902
<http://dec.vermont.gov/geological-survey>



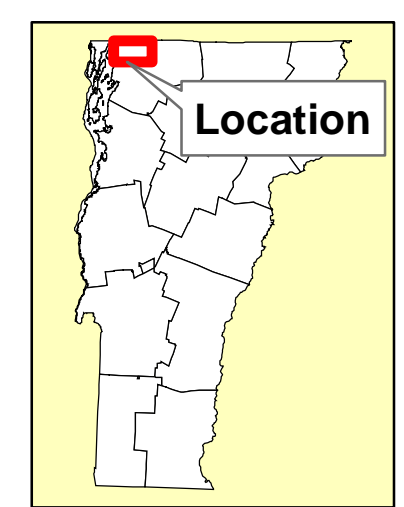


Valley Depth

- 0 to 10 meters
- > 10 meters
- Highgate Boundary
- Minor Roads
- Major Roads
- Interstates
- Streams
- Water Bodies

EXPLANATION

This plate shows areas with valley depth greater than 10 meters. This is based on an analysis of local topographic relief and is used as a component of the map of potentially unstable slopes shown on Plate 5. It emphasizes the lower portions of valleys in areas of moderate to high relief. The map is divided into classes as follows:
Class 1 - 0 to 10 meters depth
Class 2 - > 10 meters depth



Base map layers from Vermont Center for Geographic Information. Coordinate System: Vermont State Plane, meters, NAD 83. Geographic coordinates shown at top corners are in NAD 83.

Digital cartography by George Springston, June 30, 2016. Research supported by the Vermont Geological Survey, Dept. of Environmental Conservation, VT ANR.

The views and conclusions contained in this document are those of the authors and should not be interpreted as necessarily representing the official policies, either expressed or implied, of the State of Vermont.

Published by:
Vermont Geological Survey, Marjorie Gale, State Geologist
Department of Environmental Conservation
1 National Life Drive, Davis 2
Montpelier, VT 05620-3902
<http://dec.vermont.gov/geological-survey>



Valley Depth Factor Map of the Town of Highgate, Vermont

by George E. Springston
2016

