



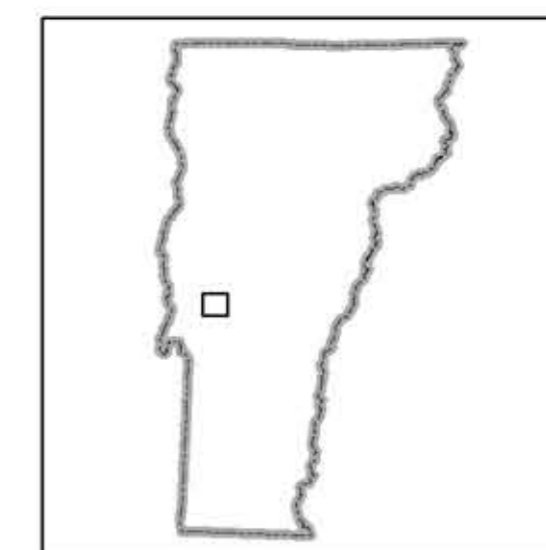
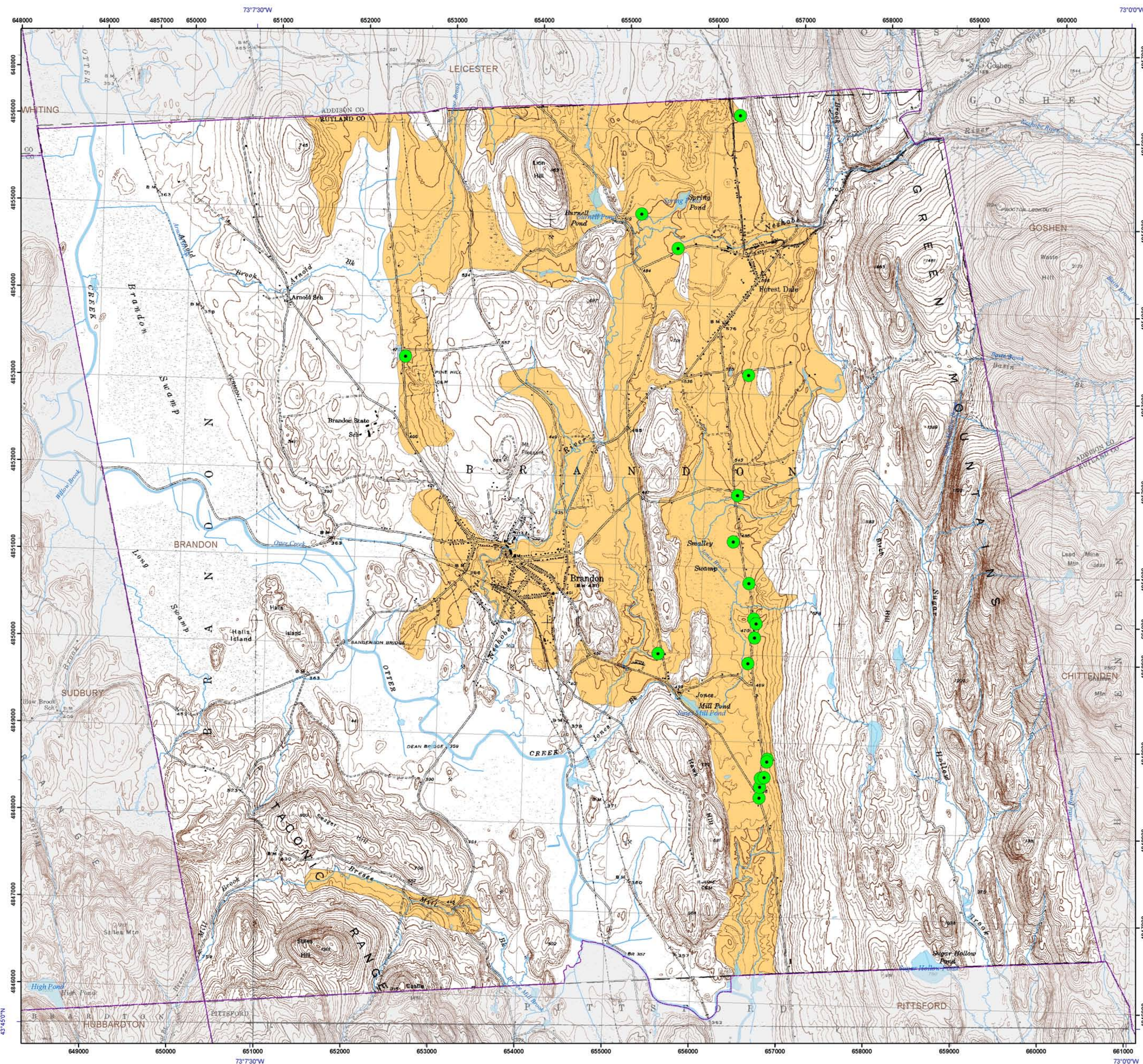


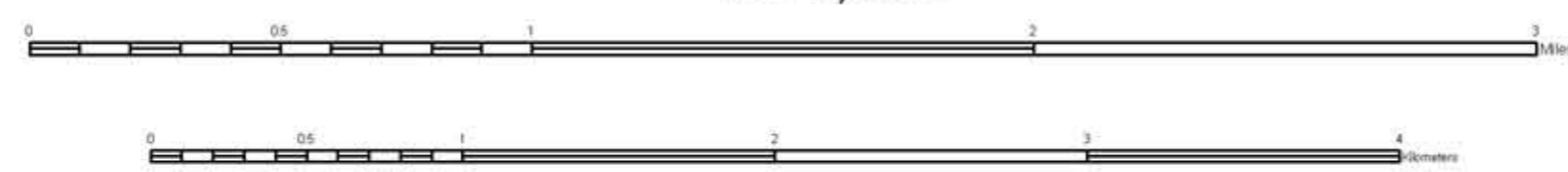
Legend

-  Gravel Wells, proven aquifer
-  Extent of potential overburden (shallow) aquifer
-  Surface water
-  Town Boundaries



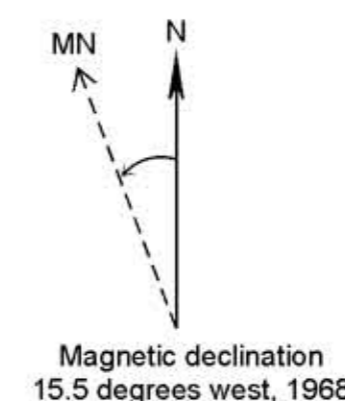
Published by:
Vermont Geological Survey
Laurence Becker, State Geologist
Department of Environmental Conservation
Agency of Natural Resources
103 South Main St., Logue Cottage
Waterbury, VT 05671-2420
<http://www.anr.state.vt.us/dec/geo/vgs.htm>

Base map from U.S. Geological Survey.
Quadrangle names printed in blue.
Coordinate System: Vermont State Plane, meters, NAD 83.
Geographic coordinates shown at topo corners are in NAD 83.
Grid overlay on map is Universal Transverse Mercator,
Zone 18N, NAD 27.
Digital Cartography: M. Young and M. Gale
Date: September 2008



1:24,000

Contour Interval 20 Feet



OVERBURDEN AQUIFERS, BRANDON, VERMONT

by
Dave DeSimone
2008

Research supported by the Vermont Geological Survey,
Dept. of Environmental Conservation, VT ANR.
This geologic map was funded in part by the USGS
National Cooperative Mapping Program,
the Brandon Fire District and the Town of Brandon.
The views and conclusions contained in this document are
those of the authors and should
not be interpreted as necessarily representing the official
policies, either expressed or implied,
of the U.S. Government.

Digital Cartography by Marci Young and Marjorie Gale

