



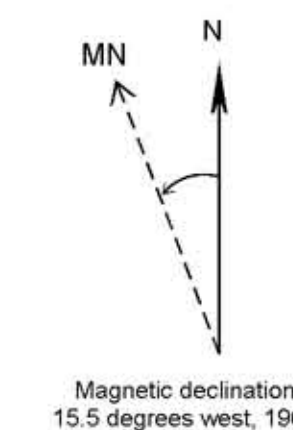
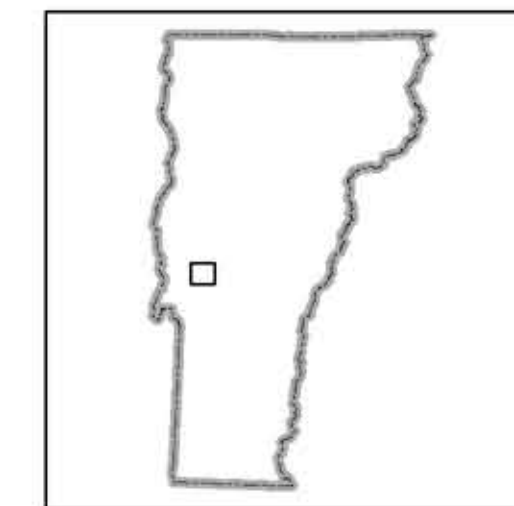


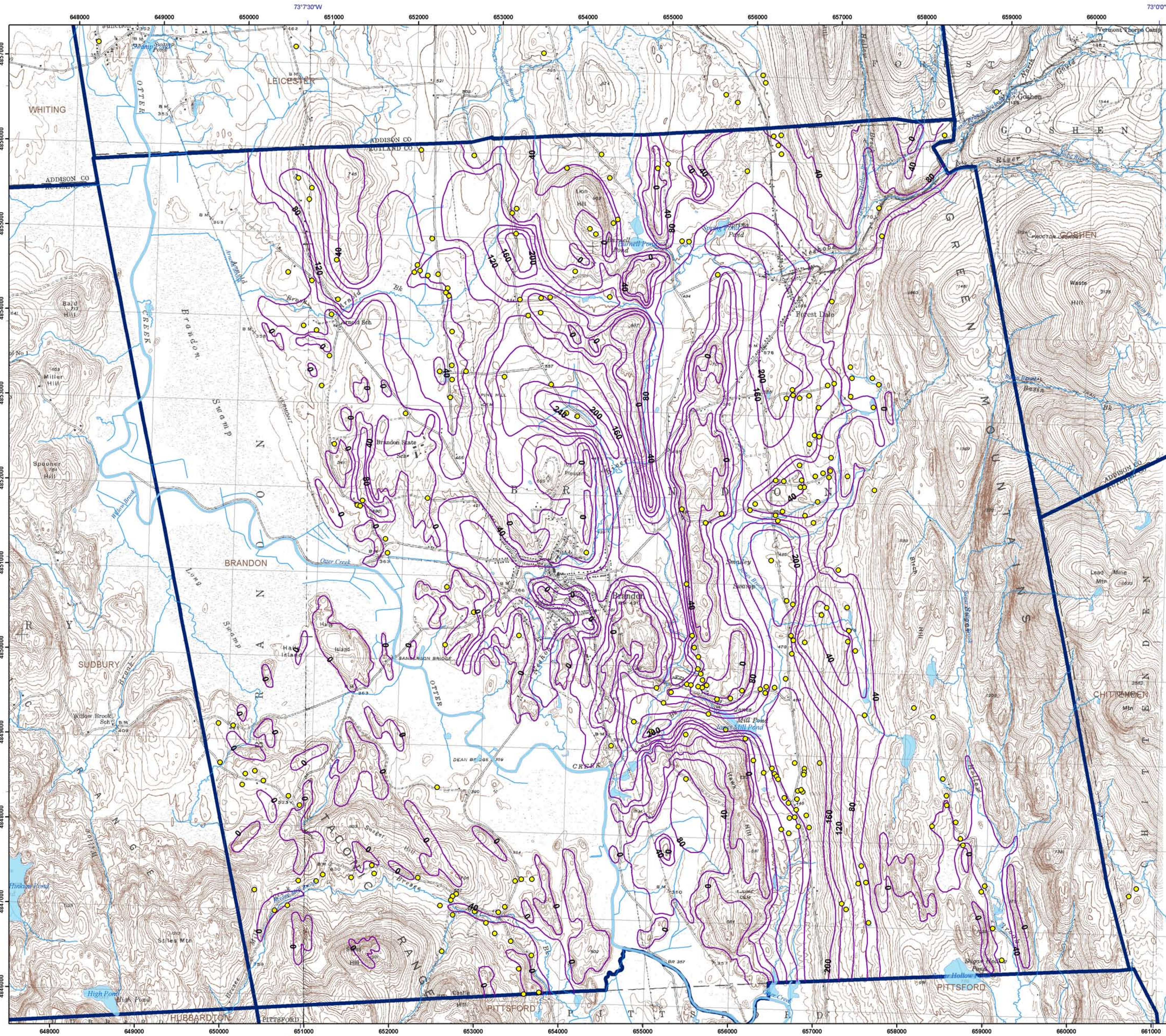
Legend

-  Water wells with E911 or GPS location
-  Depth to bedrock; Contour interval 40'
-  Surface Water
-  Town Boundaries

Research supported by the Vermont Geological Survey,
Dept. of Environmental Conservation, VT ANR.
This geologic map was funded in part by the USGS National
Cooperative Mapping Program.
The views and conclusions contained in this document are those of
the authors and should not be interpreted as
necessarily representing the official policies, either expressed
or implied, of the U.S. Government.

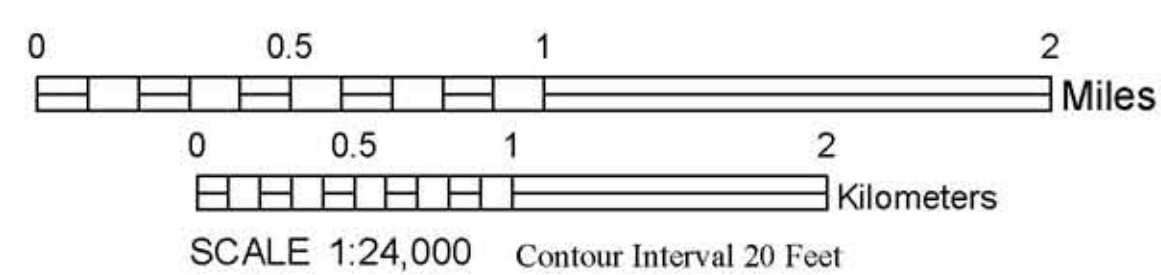


Published by:
Vermont Geological Survey
Laurence Becker, State Geologist
Department of Environmental Conservation
Agency of Natural Resources
103 South Main St., Logue Cottage
Waterbury, VT 05671-2420
<http://www.anr.state.vt.us/dec/geo/vgs.htm>



Base map from U.S. Geological Survey.
Quadrangle names printed in blue.
Coordinate System: Vermont State Plane, meters, NAD 83.
Geographic coordinates shown at topo corners are in NAD 83.
Grid overlay on map is Universal Transverse Mercator,
Zone 18N, NAD 27.

Digital Cartography by Marci Young and Marjorie Gale
Date: September 2008



DEPTH TO BEDROCK, BRANDON, VERMONT

by
David De Simone
2008