

Nineteenth Annual Report on the Status of the Petroleum Cleanup Fund

10 VSA § 1941



January 2007

This report includes a review of Petroleum Cleanup Fund receipts and disbursements for the fiscal year 2006. An evaluation of the effectiveness of the Fund in meeting its legislative intent, and a review of the reasonableness of remediation costs is also included. This report also includes recommendations concerning aboveground storage tanks.

Prepared by: The Petroleum Cleanup Fund Advisory Committee

PETROLEUM CLEANUP FUND ADVISORY COMMITTEE MEMBERS

Secretary, Agency of Natural Resources

P. Howard Flanders: Designated representative of the Commissioner,
Department of Environmental Conservation (DEC)

Walt Daly: Designated representative of the Commissioner,
Department of Banking and Insurance

Joe Choquette: Vermont Petroleum Association

Senator Virginia Lyons

Representative Alice Nitka

Scott Bigger: Designated representative of Lowell T. Spillane,
Retail gasoline dealer

Dick Barnes: A.R. Sandri, a licensed gasoline distributor

Shane Sweet: Vermont Fuel Dealers Association

Peter Bourne: Bourne's Incorporated, a licensed fuel dealer

Beth Austin: Vermont Country Properties, a licensed real estate broker

Petroleum Cleanup Fund Advisory Committee
Annual Report
Executive Summary

This is the nineteenth annual Petroleum Cleanup Fund (PCF) report submitted in accordance with 10 V.S.A. § 1941; it includes a review of receipts and disbursements for fiscal year 2006. The report also evaluates the effectiveness of the PCF in meeting its legislative intent, and reviews the reasonableness of remediation costs. This report summarizes the establishment of separate accounts within the PCF for motor fuel and heating oil related activities and includes proposed legislative changes.

In FY06 the motor fuel account remained healthy and was able to provide timely reimbursements for cleanups. The fund maintained the required \$1 million reserve and therefore satisfied EPA's requirement to remain a sound financial assurance mechanism for Vermont underground storage tank (UST) owners. Cleanup reimbursements continued at a steady pace, and moving the heating fuel cleanups to a separate account enabled the fund balance in the motor fuel account to grow.

In FY06 requests for reimbursement from the heating fuel account exceeded its income. The increased demands were due to an increase in the number and magnitude of heating fuel cleanups as well as a reduction in the projected income. To stabilize the heating fuel account, the Committee has identified a number of important modifications to the fund that the Committee hopes will be given serious consideration by the 2007 legislature. The Committee recommends that the current tank assessment fee on motor fuel tanks be expanded to include large uninsured heating fuel tanks. There should also be standards for aboveground tanks that are developed and implemented by the Agency of Natural Resources (ANR) that are designed to reduce the number of petroleum releases which affect public health and the environment. The current fee on heating oil should be changed from a ½ cent to a cent and the sunset date should be changed to 2011. Both the fee on motor fuels and the fee on heating fuels should be set up to turn on and off depending on the fund account balance. If this action were taken in 2007 then the motor fuel fee would turn off resulting in a reduction in the fees assessed to Vermonters for this fund for the year. Additionally there should be changes made to the grant and loan programs to provide greater incentive to remove aging tanks before the tanks have a petroleum release. Proposed statutory changes are included in this report.

The Committee remains concerned that the cash balance in the fund will be a target for future fund transfers; but a January 2006 actuarial study and new provisions in federal law predict this will be more costly and less desirable. According to the study, **"The Fund is projected to be technically insolvent (projected liabilities exceed assets of the fund) through 2011. This does not consider any potential legislative transfer of assets from the fund. Such a transfer would extend the period that the fund is technically insolvent."** In addition, the federal energy act contains language imposing sanctions against states that divert PCF-type funds. The Energy Policy Act of 2005 signed into law by President Bush on August 8, 2005 reads: **"The Administrator shall not distribute funds under subparagraph (A)(iii) of subsection (f)(1) to any State that has diverted funds from a State Fund or State Assurance program for purposes other than those related to the regulation of underground storage tanks covered by this subtitle, with the exception of those transfers that have been completed earlier than the date of enactment of this subsection."** ANR receives over \$400,000 LUST trust funds each year, which provides the funds for 9 employees that manage the cleanups at these sites. This work includes ensuring that human and environmental exposure to contamination is mitigated through such measures as providing alternative drinking water, drinking water treatment and requiring active remediation. Without these funds this valuable work would not be completed.

Description and Purpose

This is the nineteenth annual report on the status of the PCF. This report will look at the effectiveness of the fund in meeting its intended purpose, will review the status of cleanups from motor fuel and heating oil releases from both aboveground and underground heating oil storage tanks, will review the farm and residential underground storage tank (UST) and aboveground (AST) grant program and will provide future PCF projections and recommendations for changes to the PCF.

In 1985, the General Assembly enacted Vermont's first law to regulate the construction, maintenance and operation of underground steel tanks used for the storage of petroleum products. Act 66 of the 1985 session established standards for new construction, and set a deadline of June 30, 1998, later amended to December 22, 1998, for the removal or replacement of unprotected USTs.

In 1988 the Legislature created the PCF, and appointed this Advisory Committee to oversee the financing, effectiveness and conduct of the program. The primary purpose of the PCF is to protect public health and the environment by paying for cleanup and restoration of contaminated soil and groundwater caused by releases from underground petroleum storage tanks, and to compensate third parties for property damage and bodily injury. Many changes have been made since 1988, including the inclusion of pollution coverage for aboveground storage tanks (ASTs) and a farm and residential UST and AST grant program. The Fund also provides loans to small marketers and small towns for tank replacement, and to all tank owners for upgrades to spill and overfill leak detection equipment.

The PCF provides financial assurance to UST owners, who are required by state and federal law to provide coverage for up to \$1 million for cleanup and \$1 million for third party liability. Since such affordable comprehensive insurance coverage continues to be difficult to access for tank owners, the PCF fund enables tank owners to meet their financial responsibility (FR) requirements. By law, the U.S. EPA must approve the operation and viability of a state fund before it may serve as a financial responsibility mechanism for UST owners. EPA accepted Vermont's fund as a financial assurance mechanism in 1990, with the requirement that a minimum balance of \$1 million be maintained.



In 2004, the Legislature enacted a fee on heating fuel to create a revenue source for the heating oil related activities funded under the PCF. The PCF was also divided into two separate accounts: a motor fuel account and a heating oil account, with both revenue and expenditures to be managed within each account.

Revenue for the motor fuel account comes from an annual assessment fee of up to \$200 per tank on most underground tanks, and a “distributor licensing fee” of one cent per gallon of motor fuel sold in the state. Additional revenue comes from the repayment of loans, recovery of some costs from responsible parties, and interest accruing upon any cash balance in the fund. Revenue for the heating fuel account comes from a licensing fee of one-half cent per gallon of heating oil and kerosene sold in the state.

Expenditures include the cost of cleanup, third party payments, loans to businesses and municipalities, grants to homeowners to assist in the removal of heating oil USTs and modest administrative expenses. Each uninsured cleanup undertaken in the state becomes eligible for fund assistance after the party responsible for the tank meets a certain “deductible,” a co-insurance payment based on the circumstances of ownership. For commercial entities, the deductible is set at \$10,000 per occurrence. For homeowners, a deductible of \$250 must be met. Owners of commercial heating oil ASTs meet a \$1,000 deductible.

The sunset date for collection of the motor fuel distributor licensing fee is April 1, 2011 while the sunset date for the licensing fee on heating fuels is April 1, 2008.

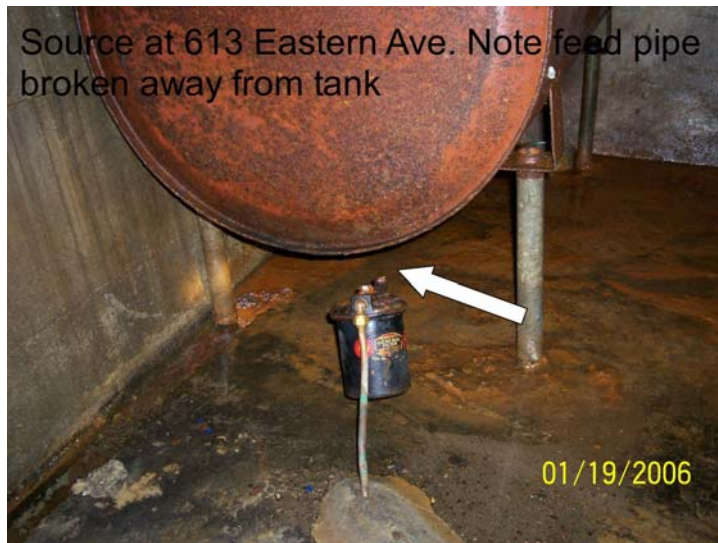
Risks to Fund Solvency

The PCF currently maintains a sufficient cash balance in the motor fuel account to address its current obligations, while the heating fuel account is inadequate to address current demands. An actuarial study was completed in 2005. This study found that the fund is projected to be technically insolvent (projected liabilities exceed assets of the fund) through 2011.

The large number of contaminated properties that are eligible for reimbursement under the Fund will continue to require significant PCF monies. One hundred and thirty seven new sites were discovered in 2006 adding to the total of over 2,700 sites discovered statewide since 1988. This large number of contaminated properties will result in continued disbursements from the PCF. Additional funds are expected to be disbursed at older sites in part due to a EPA grant requirement to address our site backlog. Over 1,200 sites remain in an active status where PCF eligible work needs to be completed. This work will likely cause an increase in claims against the PCF. There are also 13 different sites where extensive remediation is necessary, and the DEC has committed over \$1.0 million for future cleanups costs under the pay-for-performance program.

Reimbursements for releases at heating fuel sites continue to increase each year. In FY06 the heating fuel account had demands for reimbursement which exceeded the income. Although the heating oil account ended the fiscal year with a positive balance this was only accomplished due to a legislatively approved \$750,000 transfer of funds from the motor fuel account. In addition, the payment of claims in February 2006 had to be delayed while the Agency sought approval for this transfer. The delays in payments lead to the stoppage in cleanup work which put homeowners at risk from exposure to contamination and may have lead to the spread of contamination. The increased demands were due to both an increase in the number and the magnitude of the heating fuel cleanups. The increase in the number of claims is believed to be the result of an aging heating fuel storage infrastructure as well as an increased awareness of this program. More and more owners of property in Vermont are removing their heating fuel tanks and many are found to have released petroleum into the environment. In addition, many

private insurance companies are requiring that heating fuel USTs be removed as a condition of renewing the homeowner's insurance policy. There has also been an increase in the total cost of these claims. There have been a number of commercial heating fuel tanks where a significant release had occurred resulting in a costly cleanup. The farm and residential grant program for heating fuel tanks continues to remain very successful, as the number of requests for grants exceeded the amount authorized for the year. \$150,000 of the annual income into the heating fuel account is devoted to this effort.



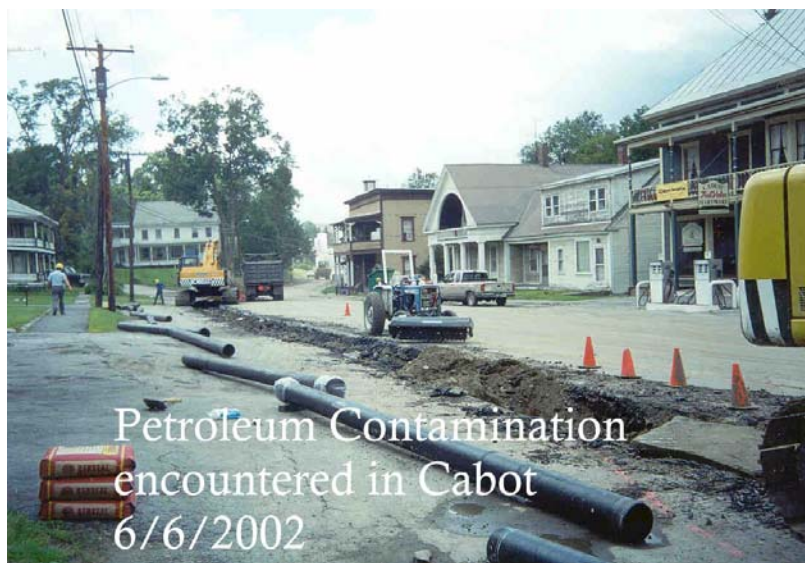
There also remains the threat of a large petroleum release in a critical area. Over the history of the program, the sites that have affected public water supplies or sensitive environmental areas have required extensive remediation at a high cost to the PCF. A site discovered in 2002 in Hartland has over 30 public and private wells that have been contaminated with a gasoline additive, MTBE. This site will require a large disbursement of PCF monies to address this problem. In addition, there are 3 sites with multiple occurrences that have received reimbursements totaling more than \$1 million each for remediation costs, 20 sites with cleanup costs less than \$1 million but greater than \$500,000 and 136 sites that have required cleanup costs less than \$500,000 but more than \$100,000 each (Attachments 2 & 3). When sites like these are discovered, cleanup work can continue, at a large fund expense, for as long as 5-10 years.



Third party claims constitute an uncertain risk. Cumulative third party claims of \$3.4 million to date represent only 5% of the total disbursements from the Fund. However, a major release in a critical area,

such as a public water supply or high density residential area could result in a costly third party claim. It is important to maintain a sufficient balance in the PCF to ensure there are adequate funds to provide an immediate and effective response where public health is at risk.

Contaminated water supplies represent the majority of all third party claims. Future discovery of contaminated public water supplies is anticipated, since there are 45 leaking underground storage tank sites located in close proximity to public water supplies. There are an approximate 441 private wells at 147 sites serving an estimated population of over 1,300 people that have been contaminated by petroleum from leaking USTs. Attachment 8 shows the distribution of sites with a direct and immediate effect on public health and the environment over the past seventeen years. The Fund continued to provide reimbursements to municipalities where petroleum contaminated soils were encountered during public water or sewer lines projects. The added cost of properly handling the contaminated material as well as having proper personal protection for the on site workers is a third party cost eligible for reimbursement from the Fund. Each year this is an uncertain risk to the Fund.



Potential future legislative transfer of funds continues to be a risk to fund solvency. According to the actuarial study, “The Fund is projected to be technically insolvent (projected liabilities exceed assets of the fund) through 2011. This does not consider any potential legislative transfer of assets from the fund. Such a transfer would extend the period that the fund is technically insolvent.” Maintaining a healthy cash balance is important to the long-term success of the fund.

Review of Receipts to the Fund

A review of fund receipts for FY06 is summarized in Attachments 1 and 4. In FY06, total fund receipts for the motor fuel account were \$4,979,759. Owners of “Category One” storage tanks paid \$366,035 in tank assessment fees. The distributor licensing fee, a one cent assessment per gallon of motor fuel sold in the state, contributed \$4,136,221. Other income includes the repayment of loans, \$271,491, and interest income of \$178,605. In addition, the state successfully recovered \$27,407.

In FY06, total fund receipts for the heating fuel account were \$812,350. This represented the collection of the ½ cent per gallon fee on heating fuels. In addition, there was \$750,000 transferred from the motor fuel account.

Review of Disbursements from the Fund

A review of fund disbursements for FY06 is summarized in Attachment 1. A review of fund disbursements over the history of the PCF is summarized in Attachment 5. In FY06, motor fuel account disbursements totaled \$3,409,452 and heating fuel disbursements totaled \$1,579,587. These included \$2,903,051 for remedial action for UST motor fuel sites, \$64,591 for the UST replacement loan program, \$88,852 for the residential UST removal grant program, \$76,349 for the residential AST removal grant program, \$818,975 for remedial action for UST heating fuel sites, \$595,411 for remedial action for AST heating fuel sites, \$240,000 for administrative costs, and \$201,811 for third party claims.

Disbursements for remediation represented a total of 1,292 different sites (Attachment 2 & 3), which includes sites which began remediation in prior years. Three of these sites have received reimbursements totaling more than \$1 million each for remediation costs. One of these cost over \$1.5 million; however, this site involves two separate properties where releases occurred, but the contamination is being managed as one site due to their close proximity and their effect on a public water supply. One other site involves significant contamination to a bedrock aquifer. There are 13 different sites where extensive remediation is necessary, and the DEC has negotiated agreements to reimburse over \$1 million for these cleanups. The cleanups for these sites are under the pay-for-performance (PFP) cleanup program. Under PFP cleanup, contractors are paid based on the effectiveness of the cleanup and not on a traditional time and materials basis.



Lastly, 66 incentive grants were approved in FY06 for the closure of residential heating oil USTs with 54 grants being paid out (FY04 and FY05 grants) totaling \$54,000. This brings the total grants awarded since 1998 to \$748,983. In addition, 92 grants were approved in FY06 for the replacement of residential heating oil ASTs, with 86 grants being paid out, totaling \$76,982. This brings the total grants awarded since 2004 to \$136,000.

In all, 1,407 sites in 212 different towns have had investigations or cleanups that have benefited from the use of the Fund. Attachment 7 shows the distribution of these sites throughout the state.

In FY06 a total of \$41,050 in UST loans (including administrative fees) was advanced for upgrade work at one station. There are three applications for loans pending. A total of 195 facilities have taken

advantage of UST loans totaling over \$6.6 million. There are currently 46 loans outstanding with a total balance owed of \$690,460.65.

In 2006 a total of 66 tanks were reported to the UST Program as not meeting the construction standards required by the rules. Twenty-two double walled tanks had failed with water or product being found in the space between the tank walls (known as the interstitial space). Seventy-two steel tanks at forty-four facilities were found to be no longer protected from external corrosion. All of these tanks were installed after 1988. Some of the tank owners have requested loan assistance to replace these tanks but unfortunately the existing statute limits loans to the replacement of tanks installed prior to 1987. The Committee recommends amending the statute to include the replacement of “new” tanks to qualifying tank owners and to increase the maximum loan amount for each facility to \$75,000.00. The cost of replacing tank systems has more than doubled over the past 20 years.



Third party claims continue to represent a small portion of overall disbursements (5%). To date the PCF has paid \$3,388,031 for all third party claims, with \$201,811 in FY06 (Attachment 3 & 4).

Effectiveness of the Fund in Meeting Its Purpose

The fund was effectively able to meet its purpose of funding cleanups and providing financial assurance for underground storage tank owners in Vermont. There was an adequate balance in the motor fuel account and claims were processed in a timely manner.

The fund was not able to effectively meet its purpose in addressing contamination from heating fuel tanks. Claims were not able to be processed in January and February 2006 as there were not adequate funds in this account. This resulted in delays in site cleanup which increased the risk of exposure to petroleum contamination in the environment. Although claims processing resumed in March 2006, without additional funding it is likely that the payment of claims will be stopped for the period of February to June 2007. This will further increase the risk of exposure to petroleum contamination in the environment.

Reasonableness of the Cost of Cleanup

In past years, the committee has reviewed the written policies and procedures of the DEC related to UST replacement, eligible costs and reimbursement procedures. In assessing the reasonableness of the cost of cleanup, the committee has reviewed national averages and comparative data from other states. The PCF Advisory Committee has concluded that agency staff responsible for this program have exercised prudent cost containment measures. A review of an annual survey conducted by the Association of State Underground Storage Tank Cleanup Funds shows that Vermont's cost of cleaning up contaminated sites is below those of other states. The continued efforts of Agency staff have helped to maintain reasonable cleanup costs in Vermont. The implementation of Vermont's pay-for-performance cleanup agreements has also helped to control costs.

Recommended Statutory Changes to Chapter 59

1. The Committee proposes the following statutory changes:

Section-by-Section Summary

Sec. 1 mandates that the secretary of natural resources adopt standards, by rule, for the design and proper installation of all above ground storage tanks. On January 1, 2012, any person offering for sale, installing, or substantially improving an above ground storage tank would need to comply with these standards.

Sec. 2 allows the secretary, subject to the approval of the advisory committee, to transfer \$250,000.00 between the motor fuel and heating fuel accounts of the Fund at the end of a fiscal year.

Sec. 2 also allows mobile home park residents that do not own the land to apply for grants or loans for the replacement or removal of tanks. It also increases the annual cap on grants from \$150,000.00 to \$200,000.00. Additional technical changes were made to this section removing the loan authority and moving that authority to Sec 5 (10 V.S.A. § 1944).

Sec. 3 extends the sunset on heating fuel fee from April 1, 2008 to April 1, 2011, and proposes to increase the fee to a full cent. This is consistent with the fee on motor fuels. This Sec. also creates a "floor" and "ceiling" for the motor fuel and heating fuel accounts. When the account reaches the "ceiling" the assessment would no longer be collected until the account reaches the "floor."

Sec. 4 creates a tank assessment fee on all underground heating fuel tanks larger than 1,100 gallons in size of \$300.00. There is a reduction in the fee to \$100.00 if the tank is double-walled. Farms are exempt from paying this fee. Persons who provide proof of insurance to the secretary are also exempt from paying this fee.

Sec. 5 expands the loan program by allowing any category one tank owner to request a loan from the secretary. The loan program is also expanded to cover the removal of any petroleum tank that may pose a risk of release to the environment and allows mobile home park owners to obtain loans to remove or upgrade tanks at mobile home parks.

Sec. 5 also creates a low interest loan program for any person who owns five or more facilities.

Proposal Language

Sec. 1. 10 V.S.A. § 1929a is added to read:

§ 1929a. STANDARDS FOR ABOVE GROUND STORAGE TANKS

(a) No later than December 31, 2011, the secretary shall adopt rules addressing the design and proper installation of above ground storage tanks.

(b) After January 1, 2012, no person shall offer for sale, install, or substantially improve an above ground storage tank that does not meet the standards adopted by the secretary under subsection (a) of this section.

Sec. 2. 10 V.S.A. § 1941(a) and (g) are amended to read:

(a) A fund to be known as the petroleum cleanup fund is created in the state treasury, to be expended by the secretary of the agency of natural resources. The fund shall consist of licensing fees and petroleum tank fees assessed under the provisions of this chapter, loan repayments, and disbursements that have been recovered, except for underground storage tank permit fees and licensing fees for tank inspectors. The fund shall have two accounts: the motor fuel account and the heating fuel account. The motor fuel account shall consist of all moneys deposited into the fund, with the exception of the licensing fees for heating oil and kerosene described in section 1942 of this title. The heating fuel account shall consist of all the moneys deposited into the fund from the licensing fees for heating oil and kerosene sold or used in the state. All balances in the fund at the end of any fiscal year shall be carried forward and remain a part of the fund. The secretary may transfer money, in each fiscal year, between the accounts provided that the transfer is approved by the advisory committee established under subsection (e) of this section and does not exceed \$250,000.00. Interest earned by the fund shall be deposited into the fund.

Disbursements from the fund shall be made by the state treasurer on warrants drawn by the commissioner of finance and management. The secretary shall seek to recover from responsible parties costs incurred under subdivision (b)(8) of this section.

(g) The owner of a farm or residential ~~underground~~ heating fuel storage tank used for on-premises heating or an underground or aboveground heating fuel storage tank used for on premises heating by a mobile home park resident, as defined in section 6201 of this title, that desires assistance to close, replace, or upgrade the tank may apply to the secretary for such assistance. The financial assistance may be in the form of grants ~~or loans~~ of up to \$1,000.00 or the costs of closure, replacement, or upgrade, whichever is less. Grants ~~or loans~~ shall be made only to the current property owners, except at mobile home parks where a grant may be awarded to a mobile home park resident. To be eligible to receive the grant ~~or loan~~, an environmental site assessment must be conducted by a qualified consultant during the tank closure, replacement, or upgrade if the tank is an underground heating fuel storage tank ~~closure, replacement, or upgrade.~~ In addition, if the closed tank is to be replaced with ~~another~~ an underground heating fuel storage tank, the replacement tank and piping shall provide a level of environmental protection at least equivalent to that provided by a double wall tank and secondarily contained piping. Grants ~~or loans~~ shall be awarded on a priority basis to projects that will avoid the greatest environmental or health risks. The secretary shall also give priority to applicants who are replacing their underground heating fuel tanks with aboveground heating fuel storage tanks, that will be installed in accordance with the secretary's recommended standards. The secretary shall also give priority to lower income applicants. ~~The owner of a farm or residential aboveground heating fuel storage tank used for on-premises heating that desires assistance to close, replace, or upgrade the tank may apply to the secretary for such assistance. The financial assistance may be in the form of grants or loans of up to \$1,000.00 or the costs of closure, replacement, or upgrade, whichever is less. Grants or loans shall be made only to the current property owners. To be eligible to receive the grant or loan, the owner must provide the previous year's financial information, and, if the replacement tank is an aboveground tank,~~ must assure that any work to replace or upgrade

a tank shall be done in accordance with industry standards (National Fire Protection Association, or NFPA, Code 31), as it existed on July 1, 2004, until another date or edition is specified by rule of the secretary. ~~The secretary shall provide these loans or grants, giving priority to low income applicants, based on eligibility criteria that are consistent with the economic assistance authorized under the home heating fuel assistance program.~~ The secretary shall only authorize up to ~~\$150,000.00~~ \$200,000.00 in assistance for underground and aboveground heating fuel tanks in any one fiscal year from the heating fuel account for this purpose. The application must be accompanied by the following information:

(1) proof of ownership, including information disclosing all owners of record of the property, except in the case where the applicant is a mobile home park resident;

(2) for farm or residential aboveground heating fuel storage tank owners, a copy of the federal income tax return for the previous year;

(3) identification of the contractor performing any heating fuel storage tank closure, replacement, or upgrade;

(4) an estimated cost of tank closure, replacement or upgrade;

(5) the amount and type of assistance requested;

(6) a schedule for the work;

(7) description of surrounding area, including location of water supply wells, surface waters and other sensitive receptors; and

(8) such other information and assurances as the secretary may require.

Sec. 3. 10 V.S.A. § 1942(b) is amended to read:

§ 1942. PETROLEUM DISTRIBUTOR LICENSING FEE

(a) There is hereby established a licensing fee of one cent per gallon of motor fuel sold by a distributor or dealer or used by a user in this state, which will be assessed against every distributor, dealer or user as defined in 23 V.S.A. chapters 27 and 28, and which will be

deposited into the petroleum cleanup fund. **The secretary shall annually determine if the balance of motor fuel account of the fund established under subsection 1941(a) of this title equal to or greater than \$6,000,000.00, and if it is the secretary shall notify all sellers assessing this fee of the suspension of the one cent licensing assessment. The secretary shall annually determine if the balance in this fund is equal to or less than \$3,000,000.00 and the fee is not being assessed then the secretary shall notify all sellers of the reinstatement of the one cent licensing assessment.** This fee will be paid in the same manner, at the same time, and subject to the same restrictions or limitations as the tax on motor fuels. The fee will be collected by the commissioner of motor vehicles and deposited into the petroleum cleanup fund. This fee requirement shall terminate on April 1, 2011.

(b) There is assessed against every seller receiving more than \$10,000.00 annually for the retail sale of heating oil or kerosene, sold in this state and not used to propel a motor vehicle, a licensing fee of ~~one-half~~ one cent per gallon of such heating oil or kerosene. This fee shall be subject to the collection, administration, and enforcement provisions of chapter 233 of Title 32, and the fees collected under this subsection by the commissioner of taxes shall be deposited into the petroleum cleanup fund. **The secretary shall annually determine if the balance of the heating fuel account of the fund created under subsection 1941(a) of this title is equal to or greater than \$3,000,000.00, and if it is the secretary shall notify all sellers assessing this fee of the suspension of the one cent licensing assessment. The secretary shall annually determine if the balance in this fund is equal to or less than \$1,000,000.00 and the fee is not being assessed then the secretary shall notify all sellers of the reinstatement of the one cent licensing assessment.** This fee provision shall terminate April 1, ~~2008~~ 2011.

Sec. 4. 10 V.S.A. § 1943 is amended to read:

§ 1943. PETROLEUM TANK ASSESSMENT

* * *

(b) Each owner of an underground storage tank with a capacity greater than 1,100 gallons and used for the storage of heating oil shall remit to the secretary on October 1 of each year beginning October 1, 2007, \$300.00 which shall be deposited in the petroleum cleanup fund established by section 1941 of this title, except that:

(1) The fee shall be \$100.00 for tanks that are double walled.

(2) The fee shall not be assessed on farms.

(3) The fee shall not be assessed on a person who provides the secretary with a copy of the owner's insurance policy provided that it conforms to guidelines established by the secretary.

(c) For purposes of this section, an occurrence is an accident, including continuous or repeated exposure to conditions, which results in the release of petroleum from one or more underground storage tanks at the same site.

(e) ~~(d)~~ This These tank assessment assessments shall terminate on July 1, 2009.

~~(d)~~ (e) The secretary shall establish forms and procedures for the payment of ~~the these~~ petroleum tank ~~assessment~~ assessments, including a notice of the obligation 30 days prior to being due. Failure to receive notice shall not waive the payment obligation.

Sec. 5. 10 V.S.A. § 1944 is amended to read:

§ 1944. UNDERGROUND STORAGE TANK LOAN ASSISTANCE PROGRAM

(a) The secretary may make individual loans of up to ~~\$40,000.00~~ \$75,000.00 for:

(1) the replacement or removal of category one tanks ~~underground motor fuel storage tanks~~ used for the storage of petroleum products. **These loans shall be made from the motor fuel account of the fund established under subsection 1941(a) of this title** ~~and permitted under section 1927 of this title and in existence on January 1, 1987. Such loans may be made only for the replacement or removal of motor fuel tanks at a retail gasoline outlet that sells less than 20,000 gallons of gasoline per month or at a municipal facility when the municipality has a population of less than 2,500 people;~~

(2) the removal, or the replacement or improvement, or both, of piping, tank-top sumps, and other components of the secondary containment and release detection systems of category one tanks, for the purpose of reducing the likelihood of a release of regulated substance to the environment. **These loans shall be made from the motor fuel account of the fund established under subsection 1941(a) of this title;**

(3) the **removal, replacement, or upgrade of an underground or aboveground storage tank** used for the storage of petroleum products for the purpose of reducing the likelihood of a release of petroleum into the environment. **These loans shall be made from the motor fuel account or heating fuel account of the fund established under subsection 1941(a) of this title, depending upon the use or contents of the tank;**

* * *

(c) The loans will be at a zero interest rate, except that a person who owns five or more facilities shall have an interest rate of four percent. As used in this subsection, “facility” shall mean the property upon which a category one tank is located.

ATTACHMENT 1
PETROLEUM CLEANUP FUND
Fund Balance Report
for Fiscal Year 2006

	Motor Fuel								Heating Fuel			
Month	Distributor Licensing Fees ⁽¹⁾	Interest on Account	Tank Assessment Fees	Loan Payments	Cost Recovery	Total Income	Total ⁽²⁾ Expenditures	Motor Fuel ⁽³⁾ Balance	Total Income	Total Expenditures	Heating Fuel Balance	Total Fund Balance
Balance Forward as of 6/30/2005	61,904,313.40	2,109,992.54	7,609,205.36	5,165,557.36	4,949,259.42	82,268,328.08	78,093,724.03	4,174,604.05	1,434,416.27	1,396,563.58	37,852.69	4,212,456.74
July	339,860.22	0.00	1,600.00	18,679.59	1,583.33	361,723.14	118,762.66	4,417,564.53	16,266.98	120,278.25	(66,158.58)	4,351,405.95
August	389,249.44	7,277.90	200.00	31,218.37	366.66	428,312.37	199,067.02	4,646,809.88	0.00	133,639.85	(199,798.43)	4,447,011.45
September	414,133.65	17,779.09	60,500.00	13,437.43	983.33	506,833.50	238,876.01	4,914,767.37	140,570.29	122,757.02	(181,985.16)	4,732,782.21
October	354,334.71	16,637.36	259,900.00	16,624.40	12,180.75	659,677.22	518,467.50	5,055,977.09	0.00	242,458.54	(424,443.70)	4,631,533.39
November	340,919.94	13,293.05	33,000.00	40,349.06	1,349.99	428,912.04	366,681.15	5,118,207.98	0.00	86,471.37	(510,915.07)	4,607,292.91
December	324,010.68	20,541.89	5,835.00	28,100.06	1,316.66	379,804.29	700,844.22	4,797,168.05	98,377.36	143,751.87	(556,289.58)	4,240,878.47
January	365,106.95	14,411.52	1,600.00	20,737.69	450.00	402,306.16	136,245.08	5,063,229.13	0.00	100,450.21	(656,739.79)	4,406,489.34
February	287,850.74	12,321.91	400.00	21,690.42	2,894.86	325,157.93	190,795.94	5,197,591.12	0.00	5,781.05	(662,520.84)	4,535,070.28
March	361,187.51	8,073.16	0.00	26,646.76	283.33	396,190.76	(55,487.79)	5,649,269.67	260,019.96	231,975.10	(634,475.98)	5,014,793.69
Adjustment	Transfer from MF To HF in March 2006 per Legislature, Act 93 of 2006 Section 66						750,000.00	4,899,269.67	750,000.00	0.00	115,524.02	5,014,793.69
April	292,479.59	9,404.63	0.00	9,296.07	4,231.29	315,411.58	155,436.88	5,809,244.37	0.00	83,481.30	32,042.72	5,841,287.09
May	318,543.68	37,796.85	0.00	28,814.56	1,566.66	386,721.75	250,993.24	5,944,972.88	0.00	118,916.68	(86,873.96)	5,858,098.92
June	348,543.63	21,067.32	3,000.00	15,896.90	200.00	388,707.85	151,000.80	6,182,679.93	297,115.30	104,136.76	106,104.58	6,288,784.51
Annual Total ⁽³⁾	4,136,220.74	178,604.68	366,035.00	271,491.31	27,406.86	4,979,758.59	3,721,682.71	1,258,075.88	1,562,349.89	1,494,098.00	68,251.89	1,326,327.77
Grand Total ⁽¹⁹⁸⁸⁻²⁰⁰⁵⁾	66,040,534.14	2,288,597.22	7,975,240.36	5,437,048.67	4,976,666.28	87,248,086.67	81,815,406.74	5,432,679.93	2,996,766.16	2,890,661.58	106,104.58	5,538,784.51

\$700,000 ⁽¹⁾ Includes startup appropriation
\$2,926,593 ⁽²⁾ Includes administrative costs
\$229,160 ⁽²⁾ Includes special funds assessments
\$5,501,000 ⁽²⁾ Includes general fund transfers
\$ 1,149,881.79 ⁽³⁾ Includes encumbrances.

Attachment 2
Petroleum Cleanup Fund
Expenditures by Site Through October 2006
Motor Fuel

PCF Site Name	Site Location	Remediation Costs	3rd Party Claims	Current Year Total	Prior Years Remediation	Prior Years 3rd Party	GRAND ⁽¹⁾ TOTAL
Addison Four Corners Store	Addison	1,946.50	0.00	1,946.50	2,719.20	0.00	4,665.70
Tri Town Water Treatment Facility	Addison	0.00	0.00	0.00	41,450.65	0.00	41,450.65
Yankee Kingdom	Addison	1,602.54	0.00	1,602.54	20,475.82	0.00	22,078.36
Chaffee General Store	Albany	0.00	0.00	0.00	7,621.08	0.00	7,621.08
Robinson's Quick Stop	Alburg	842.50	0.00	842.50	2,764.10	0.00	3,606.60
Crossroads Mobil	Alburg	40,000.00	0.00	40,000.00	285,571.00	0.00	325,571.00
Medor Bulk Storage	Alburg	0.00	0.00	0.00	8,487.50	0.00	8,487.50
Kestler's Market	Alburg	0.00	0.00	0.00	2,798.60	0.00	2,798.60
Alburg Mobil Short Stop	Alburg	19,843.02	995.52	20,838.54	18,032.62	0.00	38,871.16
Robinson's Quick Stop	Alburg	0.00	0.00	0.00	13,367.43	0.00	13,367.43
B & B Auto	Andover	1,176.30	0.00	1,176.30	21,529.07	0.00	22,705.37
LMC Service Center	Arlington	1,170.13	0.00	1,170.13	16,141.67	0.00	17,311.80
Stewarts Shop 193	Arlington	0.00	0.00	0.00	14,685.08	0.00	14,685.08
Whelan Residence	Arlington	0.00	0.00	0.00	40,251.14	262.15	40,513.29
Moose Hollow I.G.A.	Arlington	0.00	0.00	0.00	2,486.44	0.00	2,486.44
Miles' Lumber	Arlington	0.00	0.00	0.00	16,991.08	0.00	16,991.08
Lakeview Store	Averill	0.00	0.00	0.00	123,079.52	0.00	123,079.52
Charlie's Quick Stop	Bakersfield	1,780.88	0.00	1,780.88	175,344.23	0.00	177,125.11
J&A Automotive	Bakersfield	0.00	0.00	0.00	5,069.28	0.00	5,069.28
Barnard General Store	Barnard	0.00	0.00	0.00	26,968.99	0.00	26,968.99
West Barnet Garage	Barnet	11,792.85	0.00	11,792.85	553,450.33	8,909.70	574,152.88
Barnet Town Garage	Barnet	0.00	0.00	0.00	17,957.96	0.00	17,957.96
Vermont Mold & Tool	Barnet	0.00	0.00	0.00	11,243.58	0.00	11,243.58
Websters Store	Barnet	2,896.18	1,367.05	4,263.23	17,592.99	0.00	21,856.22
Passumpic Village Store	Barnet	5,619.24	101.30	5,720.54	67,325.06	521.49	73,567.09
Gilman Property	Barnet	0.00	0.00	0.00	7,920.19	0.00	7,920.19
Precision Metals	Barnet	0.00	0.00	0.00	5,337.35	0.00	5,337.35
McGoff's Sunoco	Barre City	989.33	0.00	989.33	352,302.04	0.00	353,291.37
Atlantic	Barre City	0.00	0.00	0.00	133,766.42	0.00	133,766.42
RJ Citgo	Barre City	674.77	0.00	674.77	11,984.78	0.00	12,659.55
Quarry Hill Quick Stop	Barre City	(65,673.35)	4,969.56	(60,703.79)	341,233.44	0.00	280,529.65
Nichols Block	Barre City	0.00	0.00	0.00	8,386.30	0.00	8,386.30
207R N Main Street	Barre City	0.00	0.00	0.00	180.00	0.00	180.00
Fisher Auto Parts	Barre City	0.00	0.00	0.00	11,602.29	0.00	11,602.29
Motel Pierre	Barre City	0.00	0.00	0.00	0.00	0.00	0.00
Barber's Army / Navy	Barre City	0.00	0.00	0.00	461.96	0.00	461.96
Johnson & Dix	Barre City	0.00	0.00	0.00	7,519.93	0.00	7,519.93
Barre Coal Tar	Barre City	0.00	0.00	0.00	8,046.00	0.00	8,046.00
Former Goodyear	Barre City	0.00	0.00	0.00	20,432.37	0.00	20,432.37
Marcell Ave.	Barre City	0.00	0.00	0.00	53,651.65	0.00	53,651.65
Reynolds & Sons	Barre Town	8,715.27	2,801.42	11,516.69	362,404.72	20,981.34	394,902.75
Green Mountain Diesel	Barre Town	3,649.46	0.00	3,649.46	23,482.05	0.00	27,131.51
Pacetti Residence	Barre Town	0.00	0.00	0.00	14,719.40	0.00	14,719.40
Pacetti Spill	Barre Town	0.00	0.00	0.00	19,660.40	0.00	19,660.40
Former Pratt Farm	Barre Town	0.00	0.00	0.00	3,387.39	0.00	3,387.39
Ladd's Motor Transfer	Barre Town	0.00	0.00	0.00	22,853.38	0.00	22,853.38
D&C Transport	Barton	1,109.59	0.00	1,109.59	15,777.57	0.00	16,887.16
Butler's Bus	Barton	11,715.73	903.45	12,619.18	226,141.22	64,207.37	302,967.77
Maple Lane Nursing	Barton	0.00	0.00	0.00	205,595.70	14,904.59	220,500.29
Barton Motors	Barton	19,337.12	0.00	19,337.12	337,994.54	0.00	357,331.66
Parkview Garage	Barton	0.00	0.00	0.00	17,814.80	0.00	17,814.80
Libby Residence	Barton	1,307.15	0.00	1,307.15	1,201.20	0.00	2,508.35
Croteau Property	Barton	1,586.34	0.00	1,586.34	93,930.92	66,130.01	161,647.27
Chrystal Lake outlet	Barton	0.00	0.00	0.00	8,058.47	(1,525.44)	6,533.03
Rt 5 Spill	Barton	0.00	0.00	0.00	0.00	0.00	0.00
Waterline Project	Barton	0.00	0.00	0.00	0.00	2,041.89	2,041.89
Tallmans Store	Belvidere	0.00	0.00	0.00	6,942.35	0.00	6,942.35
Keith Martin	Bennington	0.00	0.00	0.00	263,926.18	0.00	263,926.18
C&R Getty	Bennington	0.00	0.00	0.00	13,779.43	0.00	13,779.43
Fleming Texaco	Bennington	1,164.80	0.00	1,164.80	43,673.70	2,068.38	46,906.88
Sargents Short Stop	Bennington	455.00	0.00	455.00	13,397.34	0.00	13,852.34
Morrison Sales and Service	Bennington	1,098.08	0.00	1,098.08	13,051.59	0.00	14,149.67
Ideal Fuel & Fence Co.	Bennington	0.00	0.00	0.00	14,775.19	0.00	14,775.19
Benn Cty Indust corp	Bennington	0.00	0.00	0.00	3,755.30	0.00	3,755.30
Apollo Fuels	Bennington	1,629.43	0.00	1,629.43	7,043.10	0.00	8,672.53

Attachment 2
Petroleum Cleanup Fund
Expenditures by Site Through October 2006
Motor Fuel

PCF Site Name	Site Location	Remediation Costs	3rd Party Claims	Current Year Total	Prior Years Remediation	Prior Years 3rd Party	GRAND ⁽¹⁾ TOTAL
Hemmings Motor News	Bennington	0.00	0.00	0.00	33,260.77	0.00	33,260.77
Robert Greene Inc	Bennington	0.00	0.00	0.00	25,084.56	0.00	25,084.56
Tuttles' True Value	Bennington	0.00	0.00	0.00	7,011.41	0.00	7,011.41
Westside Citgo	Bennington	878.52	0.00	878.52	2,117.78	0.00	2,996.30
Charlie's Mobil	Bennington	0.00	0.00	0.00	25,632.83	0.00	25,632.83
Bennington Iron Works	Bennington	0.00	0.00	0.00	28,352.17	3,739.60	32,091.77
Morse Block	Bennington	82.72	0.00	82.72	0.00	0.00	82.72
Bennington Hatchery	Bennington	1,280.00	0.00	1,280.00	10,399.91	0.00	11,679.91
Earl's Service Station	Bennington	0.00	0.00	0.00	0.00	0.00	0.00
Apollo Industries	Bennington	0.00	0.00	0.00	4,463.50	0.00	4,463.50
Wolfe Property	Bennington	0.00	0.00	0.00	6,262.83	0.00	6,262.83
VT Liquor Store; Benn.	Bennington	0.00	0.00	0.00	8,527.94	0.00	8,527.94
Mt Anthony Middle Sch.	Bennington	0.00	0.00	0.00	10,616.39	0.00	10,616.39
Martin's Mini Mart	Bennington	0.00	0.00	0.00	21,791.28	0.00	21,791.28
Depot Properties	Bennington	0.00	0.00	0.00	459.25	67.30	526.55
Benson Country Store	Benson	5,583.49	0.00	5,583.49	0.00	0.00	5,583.49
Peter's Country Store	Benson	0.00	0.00	0.00	17,980.10	0.00	17,980.10
Walker Farm	Benson	0.00	0.00	0.00	733.00	0.00	733.00
Benson Village Store	Benson	0.00	0.00	0.00	0.00	0.00	0.00
Peter's Country Store	Benson	0.00	0.00	0.00	25,645.34	0.00	25,645.34
Chestna	Benson	0.00	0.00	0.00	4,714.35	8,251.22	12,965.57
Saints Quick Stop	Berkshire	3,317.63	0.00	3,317.63	442,849.25	0.00	446,166.88
Spillane's Service Ctr	Berlin	2,985.90	0.00	2,985.90	127,159.86	0.00	130,145.76
AOT Central Garage	Berlin	0.00	0.00	0.00	17,744.47	0.00	17,744.47
Capital Chrysler	Berlin	0.00	0.00	0.00	13,069.22	0.00	13,069.22
Rossi Buick	Berlin	0.00	0.00	0.00	8,682.26	0.00	8,682.26
Tri-Town Sunoco	Berlin	1,250.22	0.00	1,250.22	10,392.82	0.00	11,643.04
Berlin Mobil Short Stop	Berlin	799.95	0.00	799.95	18,044.79	0.00	18,844.74
Perry Bulk Facility	Berlin	0.00	0.00	0.00	11,168.88	0.00	11,168.88
Crossway Motors	Berlin	0.00	0.00	0.00	9,130.59	0.00	9,130.59
Central VT Hospital	Berlin	0.00	0.00	0.00	28,644.29	0.00	28,644.29
Central VT Shopping Ctr	Berlin	0.00	0.00	0.00	112,396.67	0.00	112,396.67
Bowles'	Berlin	0.00	0.00	0.00	858.70	1,563.74	2,422.44
Dean's Mobil	Bethel	0.00	0.00	0.00	188,227.18	0.00	188,227.18
Bolton Peak	Bolton	1,115.29	0.00	1,115.29	15,883.56	0.00	16,998.85
Bolton Valley Holiday Resort	Bolton	0.00	0.00	0.00	4,393.02	0.00	4,393.02
Maska U.S.A.	Bradford	0.00	9,825.00	9,825.00	1,750.00	34,185.00	45,760.00
Bradford Bulk Facility	Bradford	20,105.95	0.00	20,105.95	29,671.14	0.00	49,777.09
Bradford Bulk Facility	Bradford	0.00	0.00	0.00	344,983.59	0.00	344,983.59
ARC Mechanical Contractors	Bradford	817.50	0.00	817.50	0.00	0.00	817.50
CCM Sport Maska	Bradford	0.00	0.00	0.00	1,750.00	0.00	1,750.00
Zuefle Residence	Braintree	0.00	0.00	0.00	2,434.27	1,775.50	4,209.77
Brandon Fuels	Brandon	1,937.98	0.00	1,937.98	11,955.99	0.00	13,893.97
Brandon Jiffy Mart	Brandon	947.43	0.00	947.43	16,942.31	0.00	17,889.74
Otter Valley Union H.S.	Brandon	0.00	0.00	0.00	0.00	0.00	0.00
Fleming Oil	Brattleboro	0.00	0.00	0.00	323,404.56	0.00	323,404.56
Brattleboro Texaco	Brattleboro	1,047.37	0.00	1,047.37	311,202.10	0.00	312,249.47
High St.; Brattleboro	Brattleboro	834.85	0.00	834.85	173,143.27	0.00	173,978.12
Canal St. Mobil	Brattleboro	0.00	0.00	0.00	430,849.25	77.75	430,927.00
A.L. Tyler & Sons	Brattleboro	1,963.50	0.00	1,963.50	232,191.21	280.00	234,434.71
Leader Beverage Co.	Brattleboro	1,613.62	0.00	1,613.62	64,336.91	0.00	65,950.53
Putney Rd - Rice Oil	Brattleboro	3,141.19	0.00	3,141.19	50,487.63	0.00	53,628.82
Coastal Saveway	Brattleboro	600.84	0.00	600.84	21,971.71	0.00	22,572.55
Exit One Sunoco	Brattleboro	0.00	0.00	0.00	803.30	0.00	803.30
Country News	Brattleboro	0.00	1,436.32	1,436.32	4,788.03	0.00	6,224.35
176 Main Street	Brattleboro	0.00	0.00	0.00	44,347.38	0.00	44,347.38
Sonnys Sunoco	Brattleboro	0.00	0.00	0.00	3,419.84	0.00	3,419.84
Willmington Services	Brattleboro	2,200.67	0.00	2,200.67	122,144.02	0.00	124,344.69
Canal Street Texaco	Brattleboro	0.00	0.00	0.00	22,937.97	0.00	22,937.97
Former Thomas Garage	Brattleboro	5,605.40	0.00	5,605.40	0.00	0.00	5,605.40
Stafford Residence	Brattleboro	0.00	0.00	0.00	307.00	0.00	307.00
Lacroix Property	Brattleboro	0.00	0.00	0.00	919.24	0.00	919.24
Old Movie House	Brattleboro	0.00	0.00	0.00	981.99	0.00	981.99
Abbott Block	Brattleboro	0.00	0.00	0.00	1,206.00	0.00	1,206.00
Gale Residence	Brattleboro	0.00	0.00	0.00	2,035.00	0.00	2,035.00

Attachment 2
Petroleum Cleanup Fund
Expenditures by Site Through October 2006
Motor Fuel

PCF Site Name	Site Location	Remediation Costs	3rd Party Claims	Current Year Total	Prior Years Remediation	Prior Years 3rd Party	GRAND ⁽¹⁾ TOTAL
After-the-Fall Building	Brattleboro	0.00	0.00	0.00	3,597.63	0.00	3,597.63
Triple-T-Trucking	Brattleboro	0.00	0.00	0.00	4,587.39	0.00	4,587.39
Fleming Texaco	Brattleboro	0.00	0.00	0.00	8,057.29	0.00	8,057.29
Redlinger Property	Brattleboro	0.00	0.00	0.00	9,692.43	0.00	9,692.43
C & S Grocery	Brattleboro	0.00	0.00	0.00	28,803.00	0.00	28,803.00
Whetstone Brook	Brattleboro	0.00	0.00	0.00	67,757.53	0.00	67,757.53
Speciality Paperboard	Brattleboro	0.00	0.00	0.00	216,090.73	0.00	216,090.73
Bridgewater Corner Store	Bridgewater	1,242.67	1,772.44	3,015.11	159,823.41	0.00	162,838.52
Brighton Garage	Brighton	0.00	0.00	0.00	88,201.76	0.00	88,201.76
LaTouche Service Station	Brighton	1,943.75	0.00	1,943.75	12,576.32	0.00	14,520.07
Island Pond Mainway	Brighton	0.00	0.00	0.00	1,665.34	0.00	1,665.34
Northern Petroleum	Bristol	7,554.37	0.00	7,554.37	72,558.45	743.62	80,856.44
Bristol Flats	Bristol	0.00	1,072.99	1,072.99	520.00	2,490.72	4,083.71
Clark Residence	Bristol	4,586.11	0.00	4,586.11	12,960.25	0.00	17,546.36
Vallemar Farms	Bristol	0.00	0.00	0.00	9,703.32	0.00	9,703.32
Brownington Gen'l Store	Brownington	4,178.29	0.00	4,178.29	49,012.52	0.00	53,190.81
Evansville Trading Post	Brownington	2,718.11	3,221.25	5,939.36	11,422.70	0.00	17,362.06
Spillane's Petco	Burlington	1,261.91	0.00	1,261.91	183,656.09	0.00	184,918.00
Rotary Gulf/Wesco Oil	Burlington	2,888.00	0.00	2,888.00	9,142.12	8,694.28	20,724.40
Independent Foods	Burlington	7,033.69	0.00	7,033.69	95,878.77	452.40	103,364.86
Rosetti Property	Burlington	1,989.00	0.00	1,989.00	34,522.00	0.00	36,511.00
Hertz Rent A Car	Burlington	285.00	0.00	285.00	0.00	0.00	285.00
Shearer Chevrolet	Burlington	2,358.65	0.00	2,358.65	23,718.98	0.00	26,077.63
Handy's Texaco	Burlington	7,584.68	0.00	7,584.68	11,183.49	0.00	18,768.17
Spillane's Battery Street	Burlington	1,837.91	0.00	1,837.91	18,963.54	0.00	20,801.45
Simmons Dwn'twn Mobil	Burlington	8,038.96	0.00	8,038.96	54,561.70	15,409.62	78,010.28
Farrell Distributing	Burlington	0.00	0.00	0.00	6,120.35	0.00	6,120.35
Burlington Public Works	Burlington	0.00	0.00	0.00	8,600.83	0.00	8,600.83
Ralph's Mobil	Burlington	0.00	0.00	0.00	17,939.98	0.00	17,939.98
A&D Automotive	Burlington	0.00	0.00	0.00	1,925.60	0.00	1,925.60
Burlington Public Works Gar	Burlington	0.00	0.00	0.00	73,473.24	0.00	73,473.24
Burlington Public Works	Burlington	1,484.95	0.00	1,484.95	84,277.60	0.00	85,762.55
Salvation Army	Burlington	0.00	0.00	0.00	2,683.12	0.00	2,683.12
Pearl Street Mobil	Burlington	0.00	0.00	0.00	1,055.74	0.00	1,055.74
Hamlin Residence	Burlington	0.00	0.00	0.00	40,549.35	0.00	40,549.35
City Market	Burlington	0.00	0.00	0.00	10,765.37	0.00	10,765.37
Daly Residence	Burlington	0.00	0.00	0.00	5,663.03	0.00	5,663.03
Kilburn & Gates	Burlington	0.00	1,321.05	1,321.05	2,541.05	0.00	3,862.10
Hutchin's Lot	Burlington	0.00	0.00	0.00	3,160.00	0.00	3,160.00
Entomology Lab	Burlington	0.00	0.00	0.00	3,712.77	0.00	3,712.77
Sketchly Services	Burlington	0.00	0.00	0.00	4,606.26	0.00	4,606.26
Message Center	Burlington	0.00	0.00	0.00	6,290.05	0.00	6,290.05
Pease Grain	Burlington	0.00	0.00	0.00	9,841.44	0.00	9,841.44
Hertz Rent-A-Car	Burlington	0.00	0.00	0.00	47,902.49	0.00	47,902.49
Pepsi	Burlington	0.00	0.00	0.00	47,966.88	0.00	47,966.88
UVM Centennial Field	Burlington	0.00	0.00	0.00	102,846.20	0.00	102,846.20
Cabot Town Garage	Cabot	0.00	0.00	0.00	10,970.57	0.00	10,970.57
Derek's Country Store	Cabot	0.00	3,301.22	3,301.22	558,292.06	26,039.34	587,632.62
East Calais Gen'l Store	Calais	3,572.16	0.00	3,572.16	72,449.21	0.00	76,021.37
Himes Property	Calais	0.00	0.00	0.00	4,932.69	0.00	4,932.69
Cambridge Service Center	Cambridge	0.00	0.00	0.00	13,018.21	0.00	13,018.21
Tilton Property	Cambridge	0.00	0.00	0.00	5,216.60	0.00	5,216.60
Madonna Mobil	Cambridge	0.00	0.00	0.00	5,963.45	0.00	5,963.45
Ethan Allen	Canaan	0.00	0.00	0.00	56,551.63	0.00	56,551.63
Noyes Express	Canaan	2,845.75	0.00	2,845.75	48,914.12	0.00	51,759.87
Castleton Library	Castleton	0.00	0.00	0.00	190.99	0.00	190.99
Hutchin & White	Castleton	0.00	0.00	0.00	44,205.13	52.65	44,257.78
Atherton Mill	Cavendish	5,168.27	0.00	5,168.27	0.00	0.00	5,168.27
Danes Store	Charleston	0.00	0.00	0.00	15,288.63	0.00	15,288.63
West Charleston Town Garage	Charleston	24,176.74	0.00	24,176.74	0.00	0.00	24,176.74
Marbles' Store	Charlotte	1,598.55	693.25	2,291.80	26,831.49	7,356.35	36,479.64
Cedar Beach	Charlotte	0.00	0.00	0.00	195.00	7,596.50	7,791.50
Charlotte Berry Farm	Charlotte	0.00	0.00	0.00	2,185.75	0.00	2,185.75
Nordic Farm	Charlotte	0.00	0.00	0.00	79,848.88	0.00	79,848.88
Chelsea Public Well	Chelsea	0.00	0.00	0.00	82,780.09	0.00	82,780.09

Attachment 2
Petroleum Cleanup Fund
Expenditures by Site Through October 2006
Motor Fuel

PCF Site Name	Site Location	Remediation Costs	3rd Party Claims	Current Year Total	Prior Years Remediation	Prior Years 3rd Party	GRAND ⁽¹⁾ TOTAL
Upham's Store	Chelsea	0.00	0.00	0.00	101,941.09	5,564.72	107,505.81
Campbell's Garage	Chelsea	0.00	0.00	0.00	462,882.47	92,475.80	555,358.27
Soap Shed Laundromat	Chester	17,341.81	0.00	17,341.81	0.00	0.00	17,341.81
Miller's General Store	Chester	2,357.67	0.00	2,357.67	412,066.07	7,690.81	422,114.55
Sweet Residence	Chester	0.00	0.00	0.00	6,820.79	0.00	6,820.79
R.B. Erskines'	Chester	0.00	0.00	0.00	10,626.06	0.00	10,626.06
Scott Hinckley	Chester	0.00	0.00	0.00	23,806.95	0.00	23,806.95
Chester Tire A	Chester	0.00	0.00	0.00	80,167.00	0.00	80,167.00
Wooden Barrel Country Store	Chittenden	26,928.01	7,543.67	34,471.68	18,445.66	0.00	52,917.34
Judy & Jorgy's	Clarendon	8,130.48	12,728.60	20,859.08	1,012,655.67	305,521.55	1,339,036.30
Mill River Condos	Clarendon	0.00	0.00	0.00	0.00	0.00	0.00
Mill River Condos	Clarendon	0.00	0.00	0.00	8,951.78	0.00	8,951.78
Village Beverage	Colchester	5,224.24	0.00	5,224.24	638,268.55	0.00	643,492.79
Smith Petroleum	Colchester	0.00	0.00	0.00	271,992.20	0.00	271,992.20
Mary's Market	Colchester	11,398.75	0.00	11,398.75	63,680.79	0.00	75,079.54
Hilltop Texaco	Colchester	3,116.92	0.00	3,116.92	397,232.33	0.00	400,349.25
Lew's Corner Store	Colchester	4,009.55	0.00	4,009.55	54,939.91	0.00	58,949.46
Whitcomb Construction	Colchester	0.00	0.00	0.00	10,294.41	0.00	10,294.41
Joyce Hall, St Michaels College	Colchester	2,194.86	0.00	2,194.86	0.00	0.00	2,194.86
Hershberg's	Colchester	0.00	0.00	0.00	128,755.64	0.00	128,755.64
East Corinth General Store	Corinth	1,342.50	1,647.10	2,989.60	544,493.97	2,697.37	550,180.94
Robert Bartlett Property	Corinth	0.00	0.00	0.00	5,107.99	0.00	5,107.99
Fenn Residence	Cornwall	10,093.92	4,989.32	15,083.24	0.00	0.00	15,083.24
Isham Residence	Cornwall	0.00	0.00	0.00	6,944.13	0.00	6,944.13
Burkewitz	Coventry	0.00	0.00	0.00	11,309.15	0.00	11,309.15
Young Residence	Craftsbury	0.00	0.00	0.00	0.00	0.00	0.00
Craftsbury Fire Dept	Craftsbury	0.00	0.00	0.00	323.61	0.00	323.61
Danby 4 Corners Store	Danby	0.00	0.00	0.00	3,654.98	0.00	3,654.98
Smokey House, Cottage Property	Danby	0.00	0.00	0.00	4,643.73	0.00	4,643.73
Morrissey's Mercantile	Danby	0.00	0.00	0.00	9,856.09	0.00	9,856.09
Joe's Country Store	Danville	2,866.17	0.00	2,866.17	38,726.93	0.00	41,593.10
Halstead Residence	Danville	0.00	0.00	0.00	331.11	0.00	331.11
Stewart Property	Danville	2,510.38	0.00	2,510.38	0.00	0.00	2,510.38
Derby Corners Mini Mart	Derby	1,621.62	0.00	1,621.62	29,556.17	0.00	31,177.79
Don's Auto	Derby	860.69	0.00	860.69	15,129.43	0.00	15,990.12
Derby Line Mainway	Derby	10,668.79	3,277.80	13,946.59	444,856.51	1,317.00	460,120.10
Derby Trailer Park	Derby	0.00	0.00	0.00	2,957.14	0.00	2,957.14
Ammex Tax & Duty Free	Derby	0.00	0.00	0.00	9,088.83	0.00	9,088.83
Dorset Town Garage	Dorset	0.00	0.00	0.00	16,667.85	0.00	16,667.85
South Dorset General Store	Dorset	0.00	0.00	0.00	140.00	0.00	140.00
Citron property	Dorset	0.00	0.00	0.00	6,213.79	0.00	6,213.79
Robbins Property	Dorset	0.00	0.00	0.00	11,123.43	0.00	11,123.43
Christie's Market	Dover	0.00	0.00	0.00	193,986.49	0.00	193,986.49
Christy's Market	Dover	0.00	0.00	0.00	153,564.18	0.00	153,564.18
Christy's Market - South	Dover	0.00	0.00	0.00	42,262.33	0.00	42,262.33
Red Cricket Inn	Dover	0.00	0.00	0.00	2,578.13	0.00	2,578.13
East Dover Fire Dept.	Dover	0.00	0.00	0.00	7,867.41	0.00	7,867.41
Dover T Garage	Dover	0.00	0.00	0.00	21,274.32	0.00	21,274.32
West River Valley Mkt	Dummerston	1,862.55	0.00	1,862.55	351,114.34	492.20	353,469.09
Gallup Residence	Dummerston	0.00	0.00	0.00	268.30	0.00	268.30
Camp Arden Rd	Dummerston	0.00	0.00	0.00	841.91	0.00	841.91
Dudley's Store	East Montpelier	2,301.65	10,011.09	12,312.74	154,177.04	156,151.95	322,641.73
Route 14 Spill	East Montpelier	0.00	0.00	0.00	0.00	0.00	0.00
Coca-Cola	East Montpelier	0.00	0.00	0.00	66,280.42	0.00	66,280.42
Eden General Store	Eden	1,142.50	0.00	1,142.50	44,436.64	0.00	45,579.14
Charley's Quick Stop	Enosburg	2,542.41	0.00	2,542.41	254,107.05	103,360.24	360,009.70
Enosburg Mobil	Enosburg	4,537.55	0.00	4,537.55	112,173.88	0.00	116,711.43
Pattee's 108 Market	Enosburg	0.00	0.00	0.00	(325.00)	0.00	(325.00)
Blouin Brothers	Enosburg	1,271.55	0.00	1,271.55	8,212.99	0.00	9,484.54
Pattee's 108 Market	Enosburg	0.00	0.00	0.00	114,330.22	4,079.14	118,409.36
Madonna Mobil	Essex	2,031.70	0.00	2,031.70	0.00	0.00	2,031.70
Marvin's Market	Essex	1,659.34	0.00	1,659.34	28,929.65	0.00	30,588.99
Road Res-Q	Essex	268.75	0.00	268.75	20,006.15	0.00	20,274.90
Corner Gas	Essex	1,418.19	0.00	1,418.19	8,003.99	0.00	9,422.18
Bushey Sunoco	Essex	0.00	0.00	0.00	233,007.55	0.00	233,007.55

Attachment 2
Petroleum Cleanup Fund
Expenditures by Site Through October 2006
Motor Fuel

PCF Site Name	Site Location	Remediation Costs	3rd Party Claims	Current Year Total	Prior Years Remediation	Prior Years 3rd Party	GRAND ⁽¹⁾ TOTAL
Abrams' Sunoco	Essex	1,034.52	0.00	1,034.52	9,644.05	0.00	10,678.57
Kinaman Residence	Essex	0.00	0.00	0.00	4,050.49	0.00	4,050.49
Essex Shopping Plaza	Essex	0.00	0.00	0.00	4,494.79	0.00	4,494.79
McEwing Oil	Essex	0.00	0.00	0.00	6,274.51	0.00	6,274.51
Grace United Church	Essex	0.00	0.00	0.00	7,098.38	0.00	7,098.38
Essex Cracker Barrel	Essex	0.00	0.00	0.00	12,820.18	0.00	12,820.18
Benson T Garage	Fair Haven	2,427.15	0.00	2,427.15	43,546.29	0.00	45,973.44
Fair Haven Mobil	Fair Haven	3,141.23	0.00	3,141.23	63,015.42	0.00	66,156.65
Stewarts Ice Cream	Fair Haven	11,623.95	0.00	11,623.95	133,799.70	0.00	145,423.65
Fair Haven Truck Stop	Fair Haven	775.92	0.00	775.92	1,509.42	0.00	2,285.34
Showcase Video	Fair Haven	917.22	0.00	917.22	2,022.26	0.00	2,939.48
Fair Haven Bulk Facility	Fair Haven	0.00	0.00	0.00	18,849.76	0.00	18,849.76
Burke Auto	Fair Haven	9,747.04	0.00	9,747.04	0.00	0.00	9,747.04
Nan's Mobil	Fairfax	1,256.50	0.00	1,256.50	24,685.46	0.00	25,941.96
Minor's Country Store	Fairfax	14,364.85	0.00	14,364.85	21,494.05	0.00	35,858.90
Old Hotel	Fairfield	0.00	0.00	0.00	140.00	0.00	140.00
Browns ABC	Fairfield	48.75	0.00	48.75	13,041.81	0.00	13,090.56
Stone's Texaco	Fairfield	122.64	0.00	122.64	0.00	0.00	122.64
Former Fairway Auto	Fairlee	0.00	0.00	0.00	13,018.96	0.00	13,018.96
T Reynolds Property	Fayston	0.00	0.00	0.00	30,709.94	0.00	30,709.94
Jimmos Market	Ferrisburgh	708.28	0.00	708.28	4,184.96	0.00	4,893.24
Reinhardt Residence	Ferrisburgh	0.00	0.00	0.00	9,863.19	0.00	9,863.19
Cucciniello Property	Ferrisburgh	0.00	0.00	0.00	3,188.13	0.00	3,188.13
Devine Sales & Service	Ferrisburgh	0.00	0.00	0.00	0.00	0.00	0.00
Northburg Store	Ferrisburgh	0.00	0.00	0.00	634.91	0.00	634.91
Lake Carmi Mobil	Franklin	7,846.08	1,772.90	9,618.98	688,122.07	104,063.74	801,804.79
Dick Wright Ford	Franklin	2,994.85	0.00	2,994.85	66,717.23	0.00	69,712.08
Georgia Mobil	Georgia	(45,089.17)	0.00	(45,089.17)	458,717.07	0.00	413,627.90
Georgia Central Market	Georgia	0.00	0.00	0.00	347,291.40	0.00	347,291.40
Lake Parker C'ntry Store	Glover	4,999.43	0.00	4,999.43	56,375.09	0.00	61,374.52
Glover Community School	Glover	0.00	0.00	0.00	13,185.26	0.00	13,185.26
Grafton Village Garage	Grafton	1,623.87	0.00	1,623.87	11,639.20	0.00	13,263.07
Grafton Village Garage	Grafton	0.00	0.00	0.00	7,480.05	0.00	7,480.05
Pollio Residence	Grafton	0.00	0.00	0.00	9,945.52	0.00	9,945.52
A & B Beverage	Grand Isle	1,408.32	0.00	1,408.32	1,680.65	0.00	3,088.97
Grand Isle Store	Grand Isle	0.00	0.00	0.00	10,867.75	0.00	10,867.75
Chernesky Property	Grand Isle	897.18	0.00	897.18	58,182.82	1,996.75	61,076.75
A & B Beverage	Grand Isle	0.00	0.00	0.00	6,880.91	0.00	6,880.91
Shaw Water Supply Well	Guilford	0.00	0.00	0.00	751.79	17,310.51	18,062.30
Henry Transportation	Guilford	0.00	0.00	0.00	3,867.54	0.00	3,867.54
Guilford Country Store	Guilford	0.00	0.00	0.00	361.80	626.79	988.59
Long Residence	Hancock	0.00	0.00	0.00	540.00	0.00	540.00
Hardwick Kwik Stop B	Hardwick	0.00	0.00	0.00	7,223.87	12.17	7,236.04
Hay's Texaco	Hardwick	8,539.39	0.00	8,539.39	761,721.60	0.00	770,260.99
Hardwick Village	Hardwick	0.00	0.00	0.00	26,896.25	0.00	26,896.25
Hardwick House of Pizza	Hardwick	5,723.92	0.00	5,723.92	9,228.58	0.00	14,952.50
Mayo Residence	Hardwick	0.00	0.00	0.00	1,403.00	29,757.42	31,160.42
Timerson Residence	Hardwick	0.00	0.00	0.00	6,524.67	0.00	6,524.67
Walker Residence	Hardwick	0.00	0.00	0.00	22,834.99	0.00	22,834.99
Ed's Deli	Hardwick	0.00	0.00	0.00	90,228.76	0.00	90,228.76
Quechee Mobil	Hartford	5,832.19	0.00	5,832.19	0.00	0.00	5,832.19
Ed's Sunoco	Hartford	1,365.48	0.00	1,365.48	220,146.81	0.00	221,512.29
White River Bulk Facility	Hartford	802.35	0.00	802.35	31,606.60	(7,168.16)	25,240.79
Bob's Service Center	Hartford	1,193.65	0.00	1,193.65	5,524.26	0.00	6,717.91
Crossroads Store	Hartford	0.00	0.00	0.00	358,861.69	0.00	358,861.69
Quechee Inn	Hartford	0.00	0.00	0.00	1,635.81	0.00	1,635.81
Former Purcell Oil	Hartford	0.00	0.00	0.00	25,858.71	0.00	25,858.71
Walker Apartments	Hartford	0.00	0.00	0.00	11,256.93	0.00	11,256.93
Hotel Coolidge	Hartford	0.00	0.00	0.00	5,579.60	0.00	5,579.60
Twin State Fruit	Hartford	0.00	0.00	0.00	1,360.00	0.00	1,360.00
W Hartford Village Store	Hartford	0.00	0.00	0.00	0.00	0.00	0.00
Town of Hartford	Hartford	0.00	0.00	0.00	29.55	0.00	29.55
Al's Country Store	Hartford	0.00	0.00	0.00	613.00	0.00	613.00
Hartford School District	Hartford	0.00	0.00	0.00	4,048.46	0.00	4,048.46
Quechee Mobil	Hartford	0.00	0.00	0.00	94,693.66	0.00	94,693.66

Attachment 2
Petroleum Cleanup Fund
Expenditures by Site Through October 2006
Motor Fuel

PCF Site Name	Site Location	Remediation Costs	3rd Party Claims	Current Year Total	Prior Years Remediation	Prior Years 3rd Party	GRAND ⁽¹⁾ TOTAL
White River Texaco	Hartland	0.00	0.00	0.00	4,967.56	0.00	4,967.56
Hartland Water Supply	Hartland	36,410.50	17,379.40	53,789.90	353,560.35	108,140.39	515,490.64
Exxon/Mobil	Hartland	18,568.27	0.00	18,568.27	0.00	0.00	18,568.27
North Hartland Dry Kiln	Hartland	0.00	0.00	0.00	3,081.51	0.00	3,081.51
Highgate Library	Highgate	6,882.65	0.00	6,882.65	527,510.18	0.00	534,392.83
Martin's Gen'l Store	Highgate	2,173.80	0.00	2,173.80	45,140.61	0.00	47,314.41
Chevalier Drilling Co	Highgate	0.00	0.00	0.00	569.85	0.00	569.85
M and R Beverage	Highgate	0.00	0.00	0.00	0.00	4,357.07	4,357.07
Young Landfill	Highgate	0.00	0.00	0.00	0.00	0.00	0.00
International Cheese	Hinesburg	16,042.17	15,194.06	31,236.23	101,825.31	2,188.41	135,249.95
Ballard's Store	Hinesburg	6,979.61	0.00	6,979.61	58,497.74	0.00	65,477.35
Hart & Mead, Inc.	Hinesburg	6,134.52	132.32	6,266.84	232,252.48	46,015.71	284,535.03
Iroquois Manufacturing	Hinesburg	0.00	0.00	0.00	522.75	149.40	672.15
Lantman	Hinesburg	1,881.95	0.00	1,881.95	19,837.00	12,321.31	34,040.26
Giroux Body Shop	Hinesburg	13,963.61	0.00	13,963.61	54,910.34	4,789.74	73,663.69
Hallenbeck Property	Hinesburg	0.00	0.00	0.00	55,898.74	407.58	56,306.32
Habitat House	Hinesburg	679.06	0.00	679.06	0.00	0.00	679.06
East Wind Condominiums	Hinesburg	0.00	0.00	0.00	4,372.56	0.00	4,372.56
Savelle Property	Holland	1,085.77	0.00	1,085.77	49,311.18	0.00	50,396.95
Seguin Residence	Holland	0.00	0.00	0.00	9,528.98	0.00	9,528.98
Lake Horatonia Cntry Store	Hubbardton	1,328.46	0.00	1,328.46	20,284.00	0.00	21,612.46
Jacque's Country Store	Huntington	617.80	178.45	796.25	92,173.29	32,777.37	125,746.91
Beaudrys Store	Huntington	197.15	0.00	197.15	8,938.26	0.00	9,135.41
Lamoille Union H.S.	Hyde Park	41,115.31	0.00	41,115.31	146,474.50	0.00	187,589.81
LaRosa's Market	Hyde Park	0.00	0.00	0.00	3,607.30	0.00	3,607.30
Irasburg General Store	Irasburg	45,889.04	0.00	45,889.04	513,254.66	10,837.56	569,981.26
Croteau's Garage	Irasburg	0.00	0.00	0.00	15,742.53	0.00	15,742.53
Isle LaMotte Country Store	Isle LaMotte	0.00	2,033.40	2,033.40	11,443.16	0.00	13,476.56
Carson's Market	Isle LaMotte	0.00	0.00	0.00	1,490.00	(600.00)	890.00
Rawsonville	Jamaica	2,294.13	590.20	2,884.33	75,136.39	68,100.10	146,120.82
Kearley Fuels	Jamaica	1,238.15	144.40	1,382.55	325,778.68	6,465.76	333,626.99
Videgain Property	Jamaica	3,728.03	846.27	4,574.30	0.00	0.00	4,574.30
George Perry Rental Property	Jamaica	0.00	0.00	0.00	2,230.64	0.00	2,230.64
Nichol's Residence	Jamaica	0.00	0.00	0.00	7,667.95	0.00	7,667.95
Jay Peak	Jay	0.00	0.00	0.00	516,138.05	79.25	516,217.30
Desso's Store	Jericho	0.00	0.00	0.00	98,014.05	19,657.87	117,671.92
Chittenden Mills Beverage	Jericho	3,280.70	0.00	3,280.70	1,040.91	0.00	4,321.61
Big Johns Rvrside Store	Jericho	1,251.58	0.00	1,251.58	27,780.13	0.00	29,031.71
Clarks Truck Center	Jericho	280.00	0.00	280.00	0.00	0.00	280.00
Palmer Lane	Jericho	0.00	0.00	0.00	2,727.50	1,098.52	3,826.02
Village Citgo	Johnson	920.43	3,736.94	4,657.37	19,986.81	0.00	24,644.18
VT Electric Coop	Johnson	0.00	0.00	0.00	174,362.07	0.00	174,362.07
Bradley's General Store	Johnson	2,325.00	0.00	2,325.00	12,648.94	0.00	14,973.94
Johnson Woolen Mills	Johnson	0.00	11,237.61	11,237.61	0.00	0.00	11,237.61
Habro Mobil	Killington	(18,682.00)	0.00	(18,682.00)	389,906.03	0.00	371,224.03
Summitt Lodge	Killington	34,012.17	8,022.94	42,035.11	1,455,642.70	143,496.09	1,641,173.90
Waterwheel Trading Post	Killington	0.00	0.00	0.00	14,249.25	0.00	14,249.25
Killington Maint Garage	Killington	0.00	0.00	0.00	27,978.28	0.00	27,978.28
The Deli at Killington	Killington	1,731.46	0.00	1,731.46	9,155.54	0.00	10,887.00
Basin Restaurant Prpty	Killington	0.00	0.00	0.00	5,852.60	0.00	5,852.60
Sanborn Residence	Kirby	0.00	0.00	0.00	4,639.49	0.00	4,639.49
Leicester	Leicester	0.00	0.00	0.00	4,551.07	0.00	4,551.07
Lincoln Town Garage	Lincoln	0.00	0.00	0.00	518.05	0.00	518.05
Strickholm Farm	Lincoln	0.00	0.00	0.00	(803.09)	0.00	(803.09)
Wiley's Garage	Londonderry	650.95	0.00	650.95	18,084.02	0.00	18,734.97
Londonderry Auto	Londonderry	0.00	0.00	0.00	121,950.95	0.00	121,950.95
AOT	Londonderry	0.00	0.00	0.00	13,067.75	0.00	13,067.75
Center's Service Station	Londonderry	1,711.50	0.00	1,711.50	35,314.20	0.00	37,025.70
Londonderry Shop Ctr	Londonderry	19,204.17	1,459.49	20,663.66	380,161.35	69,843.09	470,668.10
Magic Mountain	Londonderry	0.00	0.00	0.00	83,910.33	0.00	83,910.33
Texaco Food Mart	Ludlow	0.00	0.00	0.00	10,902.97	0.00	10,902.97
Willette Residence	Ludlow	3,349.62	0.00	3,349.62	44,368.95	0.00	47,718.57
Jewel Brook Mill	Ludlow	0.00	0.00	0.00	5,089.63	0.00	5,089.63
Jewel Brook Mill	Ludlow	13,375.23	0.00	13,375.23	163,302.87	0.00	176,678.10
Town of Ludlow	Ludlow	0.00	0.00	0.00	3,700.57	0.00	3,700.57

Attachment 2
Petroleum Cleanup Fund
Expenditures by Site Through October 2006
Motor Fuel

PCF Site Name	Site Location	Remediation Costs	3rd Party Claims	Current Year Total	Prior Years Remediation	Prior Years 3rd Party	GRAND ⁽¹⁾ TOTAL
Ludlow Mobil	Ludlow	0.00	0.00	0.00	246,387.39	10,034.23	256,421.62
Ling's Garage	Lunenberg	0.00	0.00	0.00	400.00	0.00	400.00
Marden Industries	Lyndon	0.00	0.00	0.00	5,395.93	0.00	5,395.93
Lyndonville Texaco	Lyndon	(117,800.00)	1,227.50	(116,572.50)	501,639.34	227,254.03	612,320.87
May's V & S Variety	Lyndon	1,965.68	0.00	1,965.68	186,199.02	0.00	188,164.70
Caledonia Oil Co.	Lyndon	2,274.67	0.00	2,274.67	191,259.90	25,593.54	219,128.11
Chamberlain Bus Service	Lyndon	0.00	0.00	0.00	808.70	0.00	808.70
Speedwell Gas	Lyndon	3,625.90	0.00	3,625.90	71,355.93	0.00	74,981.83
Ville Garage	Lyndon	3,853.69	0.00	3,853.69	54,526.53	0.00	58,380.22
Caledonia Airport	Lyndon	0.00	0.00	0.00	2,491.17	0.00	2,491.17
Jons Automotive	Lyndon	10,235.10	0.00	10,235.10	18,310.36	0.00	28,545.46
Yersal Subsurface Investigation	Lyndon	0.00	0.00	0.00	57,366.91	0.00	57,366.91
Cumberland Farms	Lyndon	0.00	0.00	0.00	7,966.82	0.00	7,966.82
Lyndon Town Garage	Lyndon	0.00	0.00	0.00	8,395.33	0.00	8,395.33
Heaslip Fuels	Manchester	610.00	0.00	610.00	1,724.67	0.00	2,334.67
Manchester Gulf Station	Manchester	964.29	0.00	964.29	12,244.41	0.00	13,208.70
Hoard's Mobil	Manchester	131.25	0.00	131.25	86,675.16	0.00	86,806.41
Hand Chevrolet	Manchester	835.65	0.00	835.65	1,955.05	0.00	2,790.70
Northshire Book Store	Manchester	1,004.82	0.00	1,004.82	5,826.34	0.00	6,831.16
Burr & Burton Highschool	Manchester	0.00	0.00	0.00	3,560.79	0.00	3,560.79
Former Police, Fire & R.	Manchester	0.00	0.00	0.00	6,710.29	0.00	6,710.29
Lustgarten Residence	Manchester	0.00	0.00	0.00	8,812.20	0.00	8,812.20
Craft's County Store	Marlboro	1,365.38	0.00	1,365.38	45,963.28	14,797.11	62,125.77
Hogback Mountain	Marlboro	0.00	0.00	0.00	3,527.90	0.00	3,527.90
Marshfield Village	Marshfield	0.00	0.00	0.00	12,573.82	1,525.40	14,099.22
Court Street	Middlebury	508.97	0.00	508.97	23,931.43	0.00	24,440.40
Lackard's Mobil	Middlebury	2,566.66	0.00	2,566.66	105,909.99	0.00	108,476.65
Agway Energy	Middlebury	0.00	0.00	0.00	58,836.31	0.00	58,836.31
Village Court Plaza	Middlebury	3,037.23	0.00	3,037.23	46,532.05	0.00	49,569.28
Middlebury Beef	Middlebury	2,103.68	0.00	2,103.68	38,944.93	0.00	41,048.61
Burnham Residence	Middlebury	0.00	0.00	0.00	3,848.56	3,198.16	7,046.72
Midway Oil	Middlebury	0.00	0.00	0.00	7,464.02	0.00	7,464.02
Middlebury Dept of PW	Middlebury	913.50	0.00	913.50	48,242.94	0.00	49,156.44
Middlebury Sunoco	Middlebury	17,011.75	0.00	17,011.75	32,525.01	0.00	49,536.76
Former Tucker Residence	Middlebury	0.00	0.00	0.00	7,939.92	0.00	7,939.92
Middlebury Mobil	Middlebury	23,067.07	0.00	23,067.07	22,768.58	0.00	45,835.65
Otter Creek Bakery	Middlebury	0.00	0.00	0.00	5,708.71	0.00	5,708.71
Middlebury Union H.S.	Middlebury	0.00	0.00	0.00	10,054.64	0.00	10,054.64
Handy Brothers	Middlebury	0.00	0.00	0.00	13,407.68	0.00	13,407.68
Betourney's Market	Middlebury	0.00	0.00	0.00	139,613.25	1,800.00	141,413.25
Middlesex	Middlesex	2,766.40	906.15	3,672.55	158,795.03	22,565.61	185,033.19
Holmsten Residence	Middlesex	0.00	0.00	0.00	8,276.18	0.00	8,276.18
Parker Service Station	Middletown Spr	0.00	0.00	0.00	27,463.51	0.00	27,463.51
Grant's General Store	Middletown Spr	0.00	0.00	0.00	1,916.81	6,057.58	7,974.39
Rowley Fuels	Milton	2,817.57	0.00	2,817.57	339,495.12	15,619.44	357,932.13
Milton General Store	Milton	3,621.02	0.00	3,621.02	313,027.83	0.00	316,648.85
Arrowhead Body Shop	Milton	2,995.35	0.00	2,995.35	138,249.24	141.60	141,386.19
Marty's Mobil	Milton	1,662.45	0.00	1,662.45	10,359.46	0.00	12,021.91
Milton Midtown Mobil	Milton	1,650.60	0.00	1,650.60	12,586.62	0.00	14,237.22
Milton Beverage Warehouse	Milton	0.00	0.00	0.00	10,114.22	0.00	10,114.22
Sabo Residence	Milton	0.00	0.00	0.00	4,610.76	0.00	4,610.76
Route 7; Milton	Milton	0.00	0.00	0.00	10,835.20	98,766.99	109,602.19
Monkton Ridge	Monkton	0.00	284.75	284.75	32,295.88	89,448.04	122,028.67
Monkton Gen'l Store	Monkton	8,692.51	613.65	9,306.16	69,892.07	6,419.90	85,618.13
Lavalee Residence	Monkton	0.00	0.00	0.00	0.00	3,567.86	3,567.86
Wisowatty Residence	Monkton	0.00	0.00	0.00	2,830.99	5,316.70	8,147.69
Cota's Deli & Beverage	Montgomery	2,283.97	0.00	2,283.97	117,753.78	0.00	120,037.75
Sylvester Store	Montgomery	280.00	0.00	280.00	28,233.39	0.00	28,513.39
Bradley's Mobile	Montgomery	1,906.80	0.00	1,906.80	11,351.05	0.00	13,257.85
Pierce Mobil	Montpelier	1,398.36	0.00	1,398.36	18,934.70	0.00	20,333.06
Bob's Deli	Montpelier	4,814.18	0.00	4,814.18	157,026.61	0.00	161,840.79
Vermont College	Montpelier	0.00	0.00	0.00	80,133.58	0.00	80,133.58
White Mountain Paper	Montpelier	0.00	0.00	0.00	1,730.85	0.00	1,730.85
Capital Mobil	Montpelier	4,404.61	0.00	4,404.61	41,741.98	0.00	46,146.59
Sarduccis	Montpelier	0.00	0.00	0.00	17,152.16	0.00	17,152.16

Attachment 2
Petroleum Cleanup Fund
Expenditures by Site Through October 2006
Motor Fuel

PCF Site Name	Site Location	Remediation Costs	3rd Party Claims	Current Year Total	Prior Years Remediation	Prior Years 3rd Party	GRAND ⁽¹⁾ TOTAL
Bethany Congregational	Montpelier	0.00	0.00	0.00	37,666.19	0.00	37,666.19
Uttons Muffler	Montpelier	0.00	0.00	0.00	2,857.16	0.00	2,857.16
Perry's Service Station	Montpelier	3,962.50	0.00	3,962.50	20,727.98	0.00	24,690.48
Bob's Sunoco	Montpelier	0.00	0.00	0.00	4,370.80	0.00	4,370.80
Northlight Studio Press	Montpelier	0.00	0.00	0.00	4,758.25	0.00	4,758.25
Reed Residence	Montpelier	0.00	0.00	0.00	4,499.47	0.00	4,499.47
Walker Motors	Montpelier	2,444.35	2,781.00	5,225.35	1,399.26	0.00	6,624.61
Thraser Residence	Montpelier	0.00	0.00	0.00	545.19	0.00	545.19
Swasey Property	Montpelier	0.00	0.00	0.00	1,182.84	0.00	1,182.84
Paul Residence	Montpelier	0.00	0.00	0.00	1,313.15	0.00	1,313.15
Strong Farm	Montpelier	0.00	0.00	0.00	3,083.00	0.00	3,083.00
Bethany Congregational	Montpelier	0.00	0.00	0.00	3,897.55	0.00	3,897.55
Heney Building	Montpelier	0.00	0.00	0.00	5,871.19	0.00	5,871.19
Day's Inn	Montpelier	0.00	0.00	0.00	10,706.85	0.00	10,706.85
Carriveau's Gulf	Montpelier	0.00	0.00	0.00	703.50	5,549.26	6,252.76
172 Berlin Street	Montpelier	0.00	0.00	0.00	114,525.05	203,989.93	318,514.98
Moretown General Store	Moretown	10,640.29	0.00	10,640.29	283,247.18	0.00	293,887.47
former Tradewinds Store	Morgan	0.00	0.00	0.00	8,055.92	0.00	8,055.92
Morrisville Mobil	Morristown	10,837.39	0.00	10,837.39	11,800.59	0.00	22,637.98
Sweet and Burt	Morristown	12,010.93	0.00	12,010.93	20,572.43	0.00	32,583.36
Lakeside Garage	Morristown	0.00	0.00	0.00	26,793.00	0.00	26,793.00
Macs Convenience Store	Morristown	0.00	0.00	0.00	8,071.40	0.00	8,071.40
AOT Morrisville	Morristown	110.00	0.00	110.00	4,918.51	0.00	5,028.51
Former Stowe Oil	Morristown	4,356.26	290.29	4,646.55	278,297.86	0.00	282,944.41
Tomlinson's Market	Morristown	0.00	0.00	0.00	3,445.01	0.00	3,445.01
Ahler's Residence	Mt Holly	0.00	0.00	0.00	130.00	0.00	130.00
238 Ferry St	N Hyde Park	0.00	18.05	18.05	0.00	0.00	18.05
MacIntyre Fuels	New Haven	21,102.58	1,137.21	22,239.79	969,455.72	52,111.59	1,043,807.10
7 & 17 Corner Store	New Haven	1,409.89	0.00	1,409.89	259,885.71	0.00	261,295.60
Wells River Jiffy Mart	Newbury	0.00	0.00	0.00	9,835.43	0.00	9,835.43
Jays' Place	Newbury	3,654.29	0.00	3,654.29	30,010.16	0.00	33,664.45
Taylor Chevrolet	Newbury	0.00	0.00	0.00	5,241.97	0.00	5,241.97
Alpine Auto	Newfane	3,759.43	1,800.15	5,559.58	289,404.10	33,961.34	328,925.02
Gordon Residence	Newfane	0.00	0.00	0.00	3,894.38	0.00	3,894.38
So Newfane General Store	Newfane	0.00	0.00	0.00	262.64	0.00	262.64
Newport City Garage	Newport City	0.00	0.00	0.00	20,798.23	0.00	20,798.23
Jimmy's Quick Store	Newport City	15,169.05	0.00	15,169.05	59,075.42	0.00	74,244.47
Newport Car Wash	Newport City	2,045.64	0.00	2,045.64	26,840.51	0.00	28,886.15
Former Orleans Candy	Newport City	0.00	0.00	0.00	1,600.87	0.00	1,600.87
Hay's Ford	Newport City	0.00	0.00	0.00	13,054.31	0.00	13,054.31
Cumberland Farms	Newport City	1,105.00	0.00	1,105.00	910.98	14,492.17	16,508.15
former Hood Building	Newport City	13,857.59	0.00	13,857.59	10,093.50	0.00	23,951.09
Parker Block	Newport City	0.00	0.00	0.00	971.10	0.00	971.10
United Church	Newport City	0.00	0.00	0.00	2,876.40	0.00	2,876.40
New City	Newport City	0.00	0.00	0.00	6,078.05	0.00	6,078.05
Raboin Farm	Newport Town	1,627.60	0.00	1,627.60	18,185.10	0.00	19,812.70
Tudhope Marine	North Hero	5,033.46	0.00	5,033.46	81,499.04	0.00	86,532.50
Robare's	North Hero	1,492.14	0.00	1,492.14	66,932.90	0.00	68,425.04
Lemery's Store	Northfield	4,868.87	0.00	4,868.87	649,294.03	0.00	654,162.90
Northfield Green	Northfield	2,639.43	0.00	2,639.43	417,976.78	4,316.53	424,932.74
South Village Mobil	Northfield	18,466.35	458.15	18,924.50	134,398.16	3,168.85	156,491.51
Severy Residence	Northfield	0.00	0.00	0.00	5,057.39	0.00	5,057.39
Johnson & Dix	Norwich	0.00	0.00	0.00	6,563.28	0.00	6,563.28
Braun Residence	Norwich	0.00	0.00	0.00	3,834.43	0.00	3,834.43
Dan & Whits Service Center	Norwich	0.00	0.00	0.00	5,845.10	0.00	5,845.10
Eric Relation Property	Orange	0.00	0.00	0.00	1,042.00	0.00	1,042.00
Pickel Residence	Orange	0.00	0.00	0.00	7,901.11	0.00	7,901.11
Former Audet Farm	Orwell	1,836.20	0.00	1,836.20	16,620.49	0.00	18,456.69
Reindeau Residence	Orwell	0.00	0.00	0.00	5,869.33	0.00	5,869.33
Loomis Trucking	Pawlet	1,664.00	0.00	1,664.00	1,077.29	0.00	2,741.29
Baker Residence	Pawlet	0.00	0.00	0.00	0.00	128.65	128.65
Froehlich Residence	Pawlet	0.00	0.00	0.00	7,632.03	0.00	7,632.03
Chicken Alley	Pawlet	650.00	0.00	650.00	978.20	3,020.29	4,648.49
Sherman Residence	Pawlet	0.00	0.00	0.00	34,380.37	0.00	34,380.37
Mi-Laura Farm	Pawlet	0.00	0.00	0.00	5,204.66	0.00	5,204.66

Attachment 2
Petroleum Cleanup Fund
Expenditures by Site Through October 2006
Motor Fuel

PCF Site Name	Site Location	Remediation Costs	3rd Party Claims	Current Year Total	Prior Years Remediation	Prior Years 3rd Party	GRAND ⁽¹⁾ TOTAL
Baker Residence	Pawlet	0.00	0.00	0.00	4,950.23	4,489.81	9,440.04
Bayley-Hazen Store	Peacham	0.00	0.00	0.00	1,134.54	0.00	1,134.54
Pittsford Sunoco	Pittsford	0.00	0.00	0.00	7,443.29	0.00	7,443.29
Keiths Country Store	Pittsford	1,244.78	0.00	1,244.78	10,057.68	0.00	11,302.46
Pittsford Mills Apts	Pittsford	0.00	0.00	0.00	31,921.97	0.00	31,921.97
McEntyre Residence	Plainfield	0.00	0.00	0.00	3,585.38	0.00	3,585.38
Plainfield Auto	Plainfield	0.00	0.00	0.00	3,149.52	0.00	3,149.52
Manwell Store	Plainfield	0.00	0.00	0.00	3,538.00	0.00	3,538.00
Plymouth General Store	Plymouth	900.05	0.00	900.05	54,310.63	0.00	55,210.68
Stewart Shop #191	Poultney	4,517.91	0.00	4,517.91	26,535.92	0.00	31,053.83
Poultney Auto Supply	Poultney	0.00	0.00	0.00	2,544.60	0.00	2,544.60
Poultney BP	Poultney	935.54	0.00	935.54	10,256.25	0.00	11,191.79
Village Market	Pownal	2,699.27	0.00	2,699.27	735,892.06	12,144.03	750,735.36
Center Street	Pownal	0.00	0.00	0.00	0.00	7,196.37	7,196.37
Lertola's Toyota	Proctor	7,732.67	0.00	7,732.67	35,503.87	0.00	43,236.54
Mountain Pauls	Putney	2,951.02	1,981.95	4,932.97	270,195.51	66,351.57	341,480.05
Bass Residence	Putney	0.00	0.00	0.00	0.00	27,277.50	27,277.50
Rods Mobil	Putney	1,075.93	0.00	1,075.93	1,563.39	0.00	2,639.32
Main Street Service Ctr	Putney	0.00	0.00	0.00	21,770.25	0.00	21,770.25
Champlain Farms	Randolph	0.00	0.00	0.00	20,861.74	0.00	20,861.74
Lyons Farm	Randolph	0.00	0.00	0.00	8,369.62	0.00	8,369.62
Engle Residence	Randolph	0.00	0.00	0.00	941.00	0.00	941.00
Marshall Arbo Property	Randolph	0.00	0.00	0.00	3,385.41	0.00	3,385.41
Washburn Laundromat	Randolph	0.00	0.00	0.00	10,261.97	0.00	10,261.97
Reading Elem School	Reading	90.61	881.84	972.45	46,434.84	16,442.86	63,850.15
Hammondville Store	Reading	0.00	0.00	0.00	11,593.35	0.00	11,593.35
Readsboro Garage	Readsboro	0.00	0.00	0.00	145.39	0.00	145.39
Quik Stop Sunoco	Richford	2,643.11	0.00	2,643.11	188,572.04	5,998.49	197,213.64
Pinnacle Peddle	Richford	2,727.56	0.00	2,727.56	21,939.69	0.00	24,667.25
former Cummings Sweet Property	Richford	12,795.66	0.00	12,795.66	0.00	0.00	12,795.66
B & D Beverage	Richford	0.00	0.00	0.00	1,248.70	0.00	1,248.70
B & D Automotive	Richford	0.00	0.00	0.00	10,635.65	549.12	11,184.77
Lucky Spot	Richmond	953.91	0.00	953.91	48,493.04	0.00	49,446.95
Richmond WW Trtmnt Plant	Richmond	0.00	0.00	0.00	60,932.72	0.00	60,932.72
Richmond Truck & Auto	Richmond	0.00	0.00	0.00	5,918.79	0.00	5,918.79
Parrish Mobil	Rochester	1,760.02	0.00	1,760.02	0.00	0.00	1,760.02
King Residence	Rockingham	19.90	164.85	184.75	459,730.81	34,729.14	494,644.70
Laware Sunoco	Rockingham	0.00	0.00	0.00	130,399.62	0.00	130,399.62
Former Food & Fuel	Rockingham	0.00	0.00	0.00	18,444.32	0.00	18,444.32
D & R General Store	Rockingham	3,374.97	0.00	3,374.97	228,135.12	0.00	231,510.09
Fleming Texaco	Rockingham	0.00	0.00	0.00	273.67	0.00	273.67
Chittenden Bank	Rockingham	0.00	0.00	0.00	2,058.00	0.00	2,058.00
Village Mobil	Rockingham	0.00	0.00	0.00	105,052.27	0.00	105,052.27
White Mountain Paper	Rockingham	0.00	0.00	0.00	48,582.15	1,650.00	50,232.15
Roxbury Country Store	Roxbury	0.00	0.00	0.00	2,970.68	0.00	2,970.68
Roxbury Union Church	Roxbury	0.00	0.00	0.00	6,384.49	0.00	6,384.49
Deerfield Properties	Royalton	1,072.18	0.00	1,072.18	24,753.94	0.00	25,826.12
Royal Texaco	Royalton	0.00	0.00	0.00	21,910.88	0.00	21,910.88
Midway Oil	Rutland City	3,095.15	0.00	3,095.15	468,469.66	0.00	471,564.81
Rutland Mobil	Rutland City	2,791.02	0.00	2,791.02	19,589.28	0.00	22,380.30
J.P. Noonan	Rutland City	0.00	0.00	0.00	475,662.67	5,065.36	480,728.03
Jiffy Mart	Rutland City	1,784.55	0.00	1,784.55	185,470.74	0.00	187,255.29
Argent Ltd.	Rutland City	1,473.66	0.00	1,473.66	25,953.60	554.90	27,982.16
Mintzer Brothers	Rutland City	212.50	0.00	212.50	7,810.04	0.00	8,022.54
Eddie's Convenience	Rutland City	813.56	0.00	813.56	21,934.46	0.00	22,748.02
Stewarts Shop 192	Rutland City	18,383.89	0.00	18,383.89	42,209.11	0.00	60,593.00
Stewarts Shop 194	Rutland City	3,034.46	0.00	3,034.46	13,843.05	0.00	16,877.51
Speedi Lube	Rutland City	0.00	0.00	0.00	9,528.80	0.00	9,528.80
Rutland Short Stop	Rutland City	2,657.58	0.00	2,657.58	25,651.54	0.00	28,309.12
West Street Mobil	Rutland City	0.00	0.00	0.00	249,180.84	0.00	249,180.84
Midway Oil	Rutland City	1,101.50	0.00	1,101.50	26,702.32	0.00	27,803.82
Patch's Petroleum	Rutland City	0.00	0.00	0.00	96,008.59	1,069.84	97,078.43
Chuck's Convenience St	Rutland City	1,675.07	0.00	1,675.07	38,804.87	0.00	40,479.94
Stewarts Shop 400	Rutland City	19,871.94	0.00	19,871.94	0.00	0.00	19,871.94
Rutland Sunoco	Rutland City	1,542.71	0.00	1,542.71	13,849.70	0.00	15,392.41

Attachment 2
Petroleum Cleanup Fund
Expenditures by Site Through October 2006
Motor Fuel

PCF Site Name	Site Location	Remediation Costs	3rd Party Claims	Current Year Total	Prior Years Remediation	Prior Years 3rd Party	GRAND ⁽¹⁾ TOTAL
Craigin Auto	Rutland City	1,776.42	0.00	1,776.42	15,618.96	0.00	17,395.38
Army Maintenance Facility	Rutland City	1,200.69	0.00	1,200.69	2,094.97	0.00	3,295.66
Tomasi Residence	Rutland City	0.00	0.00	0.00	14,810.08	0.00	14,810.08
Comfort Inn	Rutland City	0.00	0.00	0.00	18,907.96	0.00	18,907.96
Raymond Residence	Rutland City	0.00	0.00	0.00	3,059.83	0.00	3,059.83
Professional Park Condos	Rutland City	0.00	0.00	0.00	41,515.89	0.00	41,515.89
McGinnis Property	Rutland City	5,807.93	0.00	5,807.93	129,602.84	0.00	135,410.77
North East School	Rutland City	0.00	0.00	0.00	2,032.62	0.00	2,032.62
Steve De Clue Residence	Rutland City	0.00	0.00	0.00	11,315.71	0.00	11,315.71
Columbia Ave Apts.	Rutland City	0.00	0.00	0.00	0.00	0.00	0.00
Merchants' Row	Rutland City	0.00	0.00	0.00	2,645.95	0.00	2,645.95
Russell Corp	Rutland City	0.00	0.00	0.00	2,896.70	0.00	2,896.70
Downtown Buildings	Rutland City	0.00	0.00	0.00	7,170.10	0.00	7,170.10
Professional Park Condos	Rutland City	0.00	0.00	0.00	23,312.89	0.00	23,312.89
Foto Hut	Rutland City	0.00	0.00	0.00	80,098.18	0.00	80,098.18
Kelly Residence	Rutland Town	0.00	0.00	0.00	29,153.28	0.00	29,153.28
Consolidated Freight	Rutland Town	0.00	0.00	0.00	22,617.93	0.00	22,617.93
Granite Group Property	Rutland Town	0.00	0.00	0.00	512.50	0.00	512.50
Metromail	Rutland Town	0.00	0.00	0.00	0.00	0.00	0.00
Flory Plaza	Rutland Town	0.00	0.00	0.00	3,054.94	0.00	3,054.94
Smith Buick	Rutland Town	0.00	0.00	0.00	7,423.13	0.00	7,423.13
Kaplan Residence	Sandgate	0.00	0.00	0.00	19,948.80	0.00	19,948.80
former Prouty & Miller Lumber Yard	Sharon	1,342.53	0.00	1,342.53	0.00	0.00	1,342.53
Spillane's	Shelburne	19,982.40	0.00	19,982.40	354,620.63	20,352.50	394,955.53
Rays Citgo	Shelburne	871.01	0.00	871.01	4,890.00	0.00	5,761.01
Goss Leasing Corp	Shelburne	0.00	0.00	0.00	42,402.37	0.00	42,402.37
216 Webster Street	Shelburne	2,624.55	237.50	2,862.05	46,489.94	0.00	49,351.99
Green Mountain Kenworth	Shelburne	0.00	0.00	0.00	2,061.81	0.00	2,061.81
Leibowitz Property	Shelburne	0.00	0.00	0.00	9,121.30	0.00	9,121.30
Foley Residence	Shelburne	0.00	0.00	0.00	1,583.50	0.00	1,583.50
Shelburn Water Line	Shelburne	21,491.35	0.00	21,491.35	0.00	0.00	21,491.35
Latelle Residence	Shelburne	0.00	0.00	0.00	6,278.92	0.00	6,278.92
Margie's Quik Stop	Sheldon	563.25	0.00	563.25	31,385.78	0.00	31,949.03
Bourbreaux Brothers	Sheldon	611.00	0.00	611.00	12,082.07	0.00	12,693.07
Lee Residence	Sheldon	0.00	0.00	0.00	5,809.05	0.00	5,809.05
Sheldon Mini Mart	Sheldon	0.00	0.00	0.00	22,393.82	15,207.11	37,600.93
Herb's Corner Store	Shoreham	1,160.81	0.00	1,160.81	26,160.64	0.00	27,321.45
Valley Garage	Shoreham	1,259.73	893.75	2,153.48	3,780.93	0.00	5,934.41
Audet Farm	Shoreham	1,192.69	0.00	1,192.69	12,198.38	0.00	13,391.07
Johannessen Residence	Shoreham	0.00	0.00	0.00	696.25	0.00	696.25
819 Union Village Road	Shoreham	0.00	0.00	0.00	3,772.06	0.00	3,772.06
Shrewsbury Mountain School	Shrewsbury	0.00	0.00	0.00	1,334.42	0.00	1,334.42
JC Stewart & Son	Shrewsbury	0.00	0.00	0.00	6,522.84	0.00	6,522.84
Mobil Short Stop	South Burlington	10,207.14	0.00	10,207.14	35,089.60	0.00	45,296.74
McDonalds	South Burlington	9,007.08	0.00	9,007.08	166,142.34	11,083.44	186,232.86
Airport Mobil	South Burlington	681.25	0.00	681.25	13,120.56	0.00	13,801.81
Williston Road Mobil	South Burlington	7,675.51	7,837.07	15,512.58	184,023.32	0.00	199,535.90
Kaigles Citgo	South Burlington	2,223.00	0.00	2,223.00	16,031.12	0.00	18,254.12
So Burl Street Dept	South Burlington	0.00	0.00	0.00	20,029.98	0.00	20,029.98
So Burlington Police Dept	South Burlington	0.00	0.00	0.00	22,764.73	0.00	22,764.73
Munson Shopyard	South Burlington	1,567.22	0.00	1,567.22	119,173.56	0.00	120,740.78
Jiffy Lube	South Burlington	89.30	0.00	89.30	7,026.93	0.00	7,116.23
Perry's Fish Market	South Burlington	0.00	0.00	0.00	16,454.30	0.00	16,454.30
Shelburne Rd Shortstop	South Burlington	10,576.44	0.00	10,576.44	437,339.62	0.00	447,916.06
Former Lake Buick	South Burlington	0.00	0.00	0.00	6,033.27	0.00	6,033.27
Dolan's Variety	South Burlington	1,066.80	0.00	1,066.80	14,061.92	0.00	15,128.72
Hertz National	South Burlington	3,754.73	0.00	3,754.73	40,216.52	0.00	43,971.25
Datillio's Sunoco	South Burlington	752.46	0.00	752.46	8,468.98	0.00	9,221.44
Champlain Valley Sunoco	South Burlington	0.00	0.00	0.00	7,008.76	0.00	7,008.76
Shelburne Road Texaco	South Burlington	2,469.83	0.00	2,469.83	3,703.56	(186.00)	5,987.39
Kaigles Small Citgo	South Burlington	975.47	0.00	975.47	4,642.46	0.00	5,617.93
Champlain St.	South Burlington	0.00	0.00	0.00	57,605.29	0.00	57,605.29
Heindel & Noyes Office	South Burlington	0.00	0.00	0.00	2,301.83	0.00	2,301.83
Staples Plaza	South Burlington	0.00	0.00	0.00	10,150.61	0.00	10,150.61
Former Alco Equipment	South Burlington	0.00	0.00	0.00	1,697.35	0.00	1,697.35

Attachment 2
Petroleum Cleanup Fund
Expenditures by Site Through October 2006
Motor Fuel

PCF Site Name	Site Location	Remediation Costs	3rd Party Claims	Current Year Total	Prior Years Remediation	Prior Years 3rd Party	GRAND ⁽¹⁾ TOTAL
Skiff UST Removal	South Burlington	0.00	0.00	0.00	1,950.15	0.00	1,950.15
Hameline Residence	South Burlington	0.00	0.00	0.00	4,666.59	0.00	4,666.59
Nordic Ford	South Burlington	0.00	0.00	0.00	8,429.92	0.00	8,429.92
D.B.I.	South Burlington	0.00	0.00	0.00	9,977.82	0.00	9,977.82
Allen Brook Group Home	South Burlington	0.00	0.00	0.00	14,230.30	0.00	14,230.30
Former Nissan Bakery	South Burlington	0.00	0.00	0.00	15,831.02	0.00	15,831.02
Fassett / Bouyea	South Burlington	0.00	0.00	0.00	110,417.51	0.00	110,417.51
Midway Oil	South Hero	0.00	0.00	0.00	104,344.17	178.50	104,522.67
Cornerstone Market	South Hero	2,313.37	0.00	2,313.37	24,513.87	0.00	26,827.24
South Hero Grocery	South Hero	1,750.88	0.00	1,750.88	23,141.58	0.00	24,892.46
Wilder Farm	South Hero	0.00	0.00	0.00	9,089.70	0.00	9,089.70
Midway Mobil	Springfield	3,453.00	0.00	3,453.00	82,944.19	163.50	86,560.69
Grampy's Travel Center	Springfield	428.73	0.00	428.73	7,093.04	0.00	7,521.77
Jiffy Mart Citgo	Springfield	1,596.70	0.00	1,596.70	12,745.99	0.00	14,342.69
Go-Go Gas	Springfield	8,116.84	0.00	8,116.84	632,891.21	0.00	641,008.05
Kangas Residence	Springfield	0.00	0.00	0.00	16,085.68	0.00	16,085.68
Springfield Fire Department	Springfield	0.00	0.00	0.00	36,647.19	0.00	36,647.19
Springfield Foodstop	Springfield	974.75	0.00	974.75	14,918.74	0.00	15,893.49
Springfield Recycling Center	Springfield	0.00	1,862.81	1,862.81	17,200.71	0.00	19,063.52
Bobs Sunoco	Springfield	0.00	0.00	0.00	15,629.38	0.00	15,629.38
Mountain View Apartments	Springfield	0.00	0.00	0.00	4,456.72	0.00	4,456.72
Jasinski Estate	Springfield	0.00	0.00	0.00	5,560.08	0.00	5,560.08
Springfield Family Center	Springfield	0.00	0.00	0.00	7,521.58	0.00	7,521.58
Joe's Disc. Beverage	Springfield	0.00	0.00	0.00	2,392.30	0.00	2,392.30
Dufresne-Henry	Springfield	0.00	0.00	0.00	4,044.08	0.00	4,044.08
Springfield Rail. Term.	Springfield	0.00	0.00	0.00	4,234.35	0.00	4,234.35
Springfield Child Care Ctr	Springfield	0.00	0.00	0.00	4,292.95	0.00	4,292.95
Lovejoy Tool Co	Springfield	0.00	0.00	0.00	4,906.72	0.00	4,906.72
Grampy's Travel Center	Springfield	0.00	0.00	0.00	90,000.00	0.00	90,000.00
LeBlanc's	St Albans City	2,109.19	0.00	2,109.19	91,697.77	0.00	93,806.96
Superior Muffler	St Albans City	1,426.50	0.00	1,426.50	11,191.75	0.00	12,618.25
45 Kingman Street - Courthouse	St Albans City	0.00	0.00	0.00	130.00	0.00	130.00
South Main St. Grocery	St Albans City	1,521.05	0.00	1,521.05	109,490.51	0.00	111,011.56
St Albans Cooperative	St Albans City	1,673.92	0.00	1,673.92	64,104.03	0.00	65,777.95
Handy Dodge	St Albans City	835.00	0.00	835.00	41,210.86	0.00	42,045.86
Lake St. Texaco	St Albans City	712.23	0.00	712.23	23,055.18	0.00	23,767.41
Lester's Service Ctr	St Albans City	4,157.35	0.00	4,157.35	32,552.26	0.00	36,709.61
SB Collins Bulk Facility	St Albans City	4,013.85	0.00	4,013.85	49,949.77	0.00	53,963.62
St Albans Public Garage	St Albans City	1,882.50	0.00	1,882.50	50,211.44	0.00	52,093.94
J&L Service Center	St Albans City	2,560.60	0.00	2,560.60	187,541.45	0.00	190,102.05
North Main Exxon	St Albans City	0.00	0.00	0.00	12,946.05	0.00	12,946.05
Grand Union Plaza	St Albans City	0.00	0.00	0.00	4,047.76	0.00	4,047.76
Carlson Residence	St Albans City	0.00	0.00	0.00	4,541.01	0.00	4,541.01
Hood Dairy	St Albans City	0.00	0.00	0.00	1,809.58	0.00	1,809.58
Lester's General Store	St Albans City	0.00	0.00	0.00	2,383.71	0.00	2,383.71
Joe Miller Gulf	St Albans City	0.00	0.00	0.00	66,946.71	0.00	66,946.71
Edgewater Market	St Albans Town	14,350.16	0.00	14,350.16	429,914.45	17,652.20	461,916.81
Office Quarters	St Albans Town	4,115.00	0.00	4,115.00	114,093.76	438.17	118,646.93
St Albans Colonial Mart	St Albans Town	812.21	0.00	812.21	3,128.68	0.00	3,940.89
State Police Barracks	St Albans Town	0.00	0.00	0.00	11,297.33	0.00	11,297.33
Mobil North	St Albans Town	1,433.75	0.00	1,433.75	18,766.30	0.00	20,200.05
Maquam Shore Market	St Albans Town	0.00	0.00	0.00	7,465.44	0.00	7,465.44
Wagon Wheel Truck Stop	St Albans Town	9,830.09	0.00	9,830.09	0.00	0.00	9,830.09
Bedard's Mobil	St Johnsbury	(5,201.24)	0.00	(5,201.24)	395,248.07	0.00	390,046.83
Windshield World	St Johnsbury	1,950.28	0.00	1,950.28	1,725.16	0.00	3,675.44
Portland St Mini Mart	St Johnsbury	18,966.12	0.00	18,966.12	483,618.38	0.00	502,584.50
Lewis Oil Co., Inc.	St Johnsbury	0.00	0.00	0.00	25,000.00	0.00	25,000.00
Gold Crown Lanes	St Johnsbury	0.00	0.00	0.00	4,161.72	0.00	4,161.72
St Johnsbury House	St Johnsbury	0.00	0.00	0.00	7,600.86	0.00	7,600.86
LaPerle Residence	St Johnsbury	0.00	0.00	0.00	3,907.53	0.00	3,907.53
Portland Street School	St Johnsbury	0.00	0.00	0.00	5,950.04	0.00	5,950.04
Yankee Traveler Motel	St Johnsbury	0.00	0.00	0.00	7,989.92	0.00	7,989.92
NE Regional Library	St Johnsbury	0.00	0.00	0.00	1,960.14	0.00	1,960.14
Rent Way	St Johnsbury	0.00	0.00	0.00	3,263.55	0.00	3,263.55
Yerkes Property	St Johnsbury	3,864.65	0.00	3,864.65	5,309.29	8,721.05	17,894.99

Attachment 2
Petroleum Cleanup Fund
Expenditures by Site Through October 2006
Motor Fuel

PCF Site Name	Site Location	Remediation Costs	3rd Party Claims	Current Year Total	Prior Years Remediation	Prior Years 3rd Party	GRAND ⁽¹⁾ TOTAL
Palmer's	St Johnsbury	0.00	0.00	0.00	2,570.22	0.00	2,570.22
St J Go-Go Mini Mart	St Johnsbury	0.00	0.00	0.00	2,760.03	0.00	2,760.03
Former South Main Accessories	St Johnsbury	0.00	0.00	0.00	2,834.00	0.00	2,834.00
Brigg's Residence	St Johnsbury	0.00	0.00	0.00	5,709.90	0.00	5,709.90
Former Vinton Motors	St Johnsbury	0.00	0.00	0.00	6,579.41	0.00	6,579.41
Riverstreet Homes	St Johnsbury	0.00	0.00	0.00	7,030.50	0.00	7,030.50
Former Subaru	St Johnsbury	0.00	0.00	0.00	10,315.33	0.00	10,315.33
Brown Electric Bldg	St Johnsbury	0.00	0.00	0.00	11,632.25	0.00	11,632.25
E.H.V. Weidman	St Johnsbury	0.00	0.00	0.00	52,390.63	0.00	52,390.63
Northern Petroleum Bulk Facility	St. Johnsbury	18,469.06	0.00	18,469.06	8,271.01	0.00	26,740.07
Starksboro General Store	Starksboro	0.00	0.00	0.00	6,835.71	0.00	6,835.71
Chamberlain Property	Starksboro	6,432.94	0.00	6,432.94	0.00	0.00	6,432.94
Mt Mansfield Garage	Stowe	6,707.70	0.00	6,707.70	520,918.59	208,444.29	736,070.58
Dave's Mobil	Stowe	1,043.50	0.00	1,043.50	8,560.75	0.00	9,604.25
Stowe Auto Service	Stowe	5,301.45	0.00	5,301.45	323,417.41	1,857.77	330,576.63
Stowe Car Wash	Stowe	0.00	0.00	0.00	269,797.19	1,540.20	271,337.39
Patridge Residence	Stowe	0.00	0.00	0.00	453.25	0.00	453.25
Peterson Brook Farm	Stowe	724.10	0.00	724.10	3,228.88	0.00	3,952.98
Auchincloss Residence	Stowe	0.00	0.00	0.00	4,786.59	0.00	4,786.59
Rivera Residence	Stowe	0.00	0.00	0.00	2,049.37	0.00	2,049.37
Wehe Residence	Stowe	0.00	0.00	0.00	10,208.92	0.00	10,208.92
Crawford Residence	Stowe	0.00	0.00	0.00	2,001.07	0.00	2,001.07
Griffith Residence	Stowe	0.00	0.00	0.00	540.72	0.00	540.72
Nelson Residence	Stowe	0.00	0.00	0.00	1,277.43	0.00	1,277.43
Coughlin Residence	Stowe	0.00	0.00	0.00	5,397.79	0.00	5,397.79
Fosters Place	Stowe	0.00	0.00	0.00	8,210.90	0.00	8,210.90
Dowling Residence	Stowe	0.00	0.00	0.00	1,978.10	684.90	2,663.00
Fosters Place	Stowe	0.00	0.00	0.00	5,822.27	0.00	5,822.27
Stowe Hardware	Stowe	0.00	0.00	0.00	5,341.49	0.00	5,341.49
Bourne's Service Ctr	Stowe	0.00	0.00	0.00	18,232.50	0.00	18,232.50
Notch Brook Condos	Stowe	0.00	0.00	0.00	28,443.66	0.00	28,443.66
Dave's Mobil	Stowe	0.00	0.00	0.00	0.00	1,857.76	1,857.76
Coburn's General Store	Strafford	0.00	0.00	0.00	470,666.15	0.00	470,666.15
Stratton Town Garage	Stratton	0.00	0.00	0.00	166.14	0.00	166.14
Stratton Mtn Sun Bowl	Stratton	0.00	0.00	0.00	3,500.41	0.00	3,500.41
Stratton Mtn Golf Area	Stratton	0.00	0.00	0.00	10,622.51	0.00	10,622.51
Stratton Mtn Maint.	Stratton	0.00	0.00	0.00	49,988.31	0.00	49,988.31
King George School	Sutton	0.00	0.00	0.00	65,474.57	0.00	65,474.57
Swanton Village	Swanton	882.85	0.00	882.85	159,141.87	0.00	160,024.72
Swanton Mobil	Swanton	1,865.18	0.00	1,865.18	35,598.10	0.00	37,463.28
Masse's Minit Mart	Swanton	1,063.10	0.00	1,063.10	182,664.24	0.00	183,727.34
St. Maries aka Dave's Quick Stop	Swanton	2,782.98	0.00	2,782.98	24,680.53	0.00	27,463.51
Swanton Sunoco	Swanton	1,201.94	0.00	1,201.94	7,689.94	0.00	8,891.88
Webb's Getty	Swanton	1,314.19	0.00	1,314.19	363,469.73	4,579.70	369,363.62
Swanton Car Wash	Swanton	229.41	0.00	229.41	16,693.33	0.00	16,922.74
Rillo Residence	Swanton	0.00	0.00	0.00	23,170.04	7,455.03	30,625.07
Grand Ave Enterprises	Swanton	1,907.53	0.00	1,907.53	5,823.68	0.00	7,731.21
North Country Cycle	Swanton	0.00	0.00	0.00	4,416.76	0.00	4,416.76
VT precisions Tools	Swanton	0.00	0.00	0.00	537.47	0.00	537.47
VT precisions Tools	Swanton	0.00	0.00	0.00	5,282.44	0.00	5,282.44
Delude Property	Swanton	9,976.29	0.00	9,976.29	0.00	0.00	9,976.29
Swanton Elem School	Swanton	0.00	0.00	0.00	0.00	0.00	0.00
Brook's Feeds	Swanton	0.00	0.00	0.00	2,985.03	0.00	2,985.03
Thetford Elementary School	Thetford	0.00	0.00	0.00	4,677.73	0.00	4,677.73
former Baker's Store	Thetford	24,943.39	0.00	24,943.39	0.00	0.00	24,943.39
Thetford Village Store	Thetford	0.00	0.00	0.00	725.95	0.00	725.95
West Topsham Country Store	Topsham	1,679.80	0.00	1,679.80	0.00	0.00	1,679.80
Topsham Telephone Co	Topsham	0.00	0.00	0.00	28,157.49	0.00	28,157.49
Limlaw Pulpwood	Topsham	0.00	0.00	0.00	9,866.77	0.00	9,866.77
Bristol	Townshend	54.99	487.78	542.77	9,336.48	12,630.14	22,509.39
Victoria Residence	Townshend	0.00	0.00	0.00	5,862.06	0.00	5,862.06
BJ's Corner Store	Troy	15,840.49	0.00	15,840.49	109,635.34	0.00	125,475.83
4 Corner's Mini Mart	Troy	2,242.10	0.00	2,242.10	28,935.65	0.00	31,177.75
Hamlin Property	Troy	5,674.95	0.00	5,674.95	9,971.21	0.00	15,646.16
Well's Country Store	Underhill	1,363.30	0.00	1,363.30	203,191.44	4,501.09	209,055.83

Attachment 2
Petroleum Cleanup Fund
Expenditures by Site Through October 2006
Motor Fuel

PCF Site Name	Site Location	Remediation Costs	3rd Party Claims	Current Year Total	Prior Years Remediation	Prior Years 3rd Party	GRAND ⁽¹⁾ TOTAL
Riverside Apartments	Vergennes	3,253.19	0.00	3,253.19	343,007.88	14,062.92	360,323.99
Vergennes Waste Water Treatment	Vergennes	0.00	0.00	0.00	4,184.54	0.00	4,184.54
Former Epson's Gulf	Vernon	1,021.74	0.00	1,021.74	261,337.44	2,050.80	264,409.98
Vt Yankee Nuclear Power Corp	Vernon	0.00	0.00	0.00	6,535.00	0.00	6,535.00
Ward's Garage	Vershire	1,532.56	0.00	1,532.56	82,105.85	679.00	84,317.41
Estelle Blake Estate	Vershire	0.00	0.00	0.00	717.28	0.00	717.28
Village Store	Waitsfield	3,321.15	2,457.28	5,778.43	801,684.27	75,426.13	882,888.83
Hap's Service Center	Waitsfield	11,582.97	0.00	11,582.97	124,008.82	0.00	135,591.79
Bonnette's Garage	Waitsfield	1,053.57	0.00	1,053.57	11,202.99	0.00	12,256.56
Waitsfield Town Off/Joslin Lib	Waitsfield	0.00	0.00	0.00	2,754.84	0.00	2,754.84
Mehuron Drive Spill	Waitsfield	0.00	0.00	0.00	8,993.50	1,590.52	10,584.02
Mehuron Drive Spill	Waitsfield	0.00	0.00	0.00	0.00	2,188.54	2,188.54
Waitsfield Gulf	Waitsfield	0.00	0.00	0.00	29,298.44	655.92	29,954.36
Town of Walden	Walden	0.00	0.00	0.00	350.00	0.00	350.00
Walden General Store	Walden	0.00	0.00	0.00	0.00	229.00	229.00
Hooker Residence	Walden	0.00	0.00	0.00	14,710.74	0.00	14,710.74
Wallingford Sawmill	Wallingford	0.00	0.00	0.00	4,780.00	0.00	4,780.00
F.W. Arms Store	Wardsboro	3,771.70	0.00	3,771.70	61,080.72	0.00	64,852.42
Sugarbush Resort	Warren	4,128.11	0.00	4,128.11	248,308.22	0.00	252,436.33
former Kingsbury Service Station	Warren	973.45	0.00	973.45	1,520.53	0.00	2,493.98
Wortman Residence	Warren	0.00	0.00	0.00	0.00	70.55	70.55
Lyle's Superette	Washington	2,091.50	0.00	2,091.50	26,133.98	0.00	28,225.48
Park Street Well	Waterbury	0.00	0.00	0.00	48,517.11	0.00	48,517.11
Snow Valley Sunoco	Waterbury	1,483.67	0.00	1,483.67	51,358.65	0.00	52,842.32
Flanders Residence	Waterbury	0.00	0.00	0.00	4,070.30	0.00	4,070.30
Grenier Residence	Waterbury	0.00	0.00	0.00	0.00	0.00	0.00
Waterbury Village Gar.	Waterbury	0.00	0.00	0.00	374,538.57	6,740.00	381,278.57
Garry Residence	Waterford	0.00	0.00	0.00	3,820.85	0.00	3,820.85
Fenoff Residence	Waterford	0.00	0.00	0.00	72,742.81	1,704.24	74,447.05
Waterville Garage	Waterville	0.00	0.00	0.00	55.38	0.00	55.38
Ascutney Citgo	Weathersfield	2,221.22	0.00	2,221.22	364,709.85	0.00	366,931.07
Ascutney Sunoco	Weathersfield	2,587.35	0.00	2,587.35	28,356.55	0.00	30,943.90
Weathersfield Town Gar	Weathersfield	2,082.60	0.00	2,082.60	138,786.10	9,128.86	149,997.56
Exit 8 Mobil	Weathersfield	1,687.75	0.00	1,687.75	4,848.40	0.00	6,536.15
Transfer Station	Weathersfield	0.00	0.00	0.00	0.00	0.00	0.00
Perkinsville Church	Weathersfield	0.00	0.00	0.00	4,176.75	0.00	4,176.75
Hodgeson Brothers	Weathersfield	0.00	0.00	0.00	866.88	133.20	1,000.08
Rosen Property	Wells	0.00	0.00	0.00	4,008.65	0.00	4,008.65
McGanns Mobil	West Rutland	1,288.48	0.00	1,288.48	2,784.81	0.00	4,073.29
Sports West	West Rutland	1,453.91	0.00	1,453.91	182,650.88	0.00	184,104.79
Town of West Rutland	West Rutland	0.00	0.00	0.00	0.00	0.00	0.00
Maintenance Garage	West Windsor	0.00	0.00	0.00	2,824.56	0.00	2,824.56
Meuniers/Westfield Garage	Westfield	3,958.67	0.00	3,958.67	24,261.18	0.00	28,219.85
Bartlau Residence	Westford	0.00	0.00	0.00	6,693.72	0.00	6,693.72
Westminster	Westminster	0.00	0.00	0.00	6,229.20	0.00	6,229.20
Millbrook Store	Westmore	0.00	0.00	0.00	6,164.91	0.00	6,164.91
Weston Market Place	Weston	1,663.45	0.00	1,663.45	52,152.73	0.00	53,816.18
Travis Residence	Weston	0.00	0.00	0.00	7,502.35	0.00	7,502.35
Via Residence	Weston	0.00	0.00	0.00	3,441.51	0.00	3,441.51
Gibb Residence	Weybridge	393.25	0.00	393.25	72,343.19	0.00	72,736.44
Wheelock Village Store	Wheelock	5,072.18	0.00	5,072.18	575,027.54	0.00	580,099.72
Whiting County Store	Whiting	0.00	0.00	0.00	6,018.66	0.00	6,018.66
Why-Not-Farm	Whiting	0.00	0.00	0.00	15,171.77	0.00	15,171.77
Bartlett Construction	Whitingham	889.49	0.00	889.49	0.00	0.00	889.49
Whitingham Country Store	Whitingham	0.00	0.00	0.00	8,283.94	7,790.00	16,073.94
Village Sunoco	Whitingham	0.00	0.00	0.00	5,526.14	0.00	5,526.14
Withington Estate	Wilder	0.00	0.00	0.00	13,172.35	0.00	13,172.35
Dave's Automotive	Williston	0.00	0.00	0.00	520.00	0.00	520.00
Williston Country Club	Williston	0.00	0.00	0.00	13,120.28	0.00	13,120.28
Korner Kwik Stop	Williston	1,300.28	0.00	1,300.28	2,401.96	0.00	3,702.24
Tafts Corners Short Stop	Williston	36,556.69	0.00	36,556.69	126,912.85	0.00	163,469.54
O'Briens Town and Country Store	Williston	697.49	0.00	697.49	4,068.02	0.00	4,765.51
Bouffard Residence	Williston	0.00	0.00	0.00	3,320.86	0.00	3,320.86
Ellinger Residence	Williston	0.00	0.00	0.00	11,104.51	0.00	11,104.51
Tafts Corners	Williston	0.00	0.00	0.00	74,742.77	0.00	74,742.77

Attachment 2
Petroleum Cleanup Fund
Expenditures by Site Through October 2006
Motor Fuel

PCF Site Name	Site Location	Remediation Costs	3rd Party Claims	Current Year Total	Prior Years Remediation	Prior Years 3rd Party	GRAND ⁽¹⁾ TOTAL
Wilmington Mobil	Wilmington	0.00	0.00	0.00	2,890.73	0.00	2,890.73
Brown's Sales & Service	Windsor	0.00	0.00	0.00	157,590.64	0.00	157,590.64
Old Windsor Village	Windsor	0.00	2,827.50	2,827.50	0.00	0.00	2,827.50
Windsor Texaco	Windsor	0.00	0.00	0.00	5,960.83	0.00	5,960.83
Lamire Property	Windsor	5,803.08	0.00	5,803.08	17,939.98	0.00	23,743.06
Former Quick Stop	Windsor	0.00	0.00	0.00	2,688.98	0.00	2,688.98
Mascoma Savings Bank	Windsor	0.00	0.00	0.00	544.17	0.00	544.17
Largay Residence	Windsor	0.00	0.00	0.00	2,713.87	0.00	2,713.87
Brownsville Gen'l Store	Windsor	0.00	0.00	0.00	12,093.65	0.00	12,093.65
McGinley Property	Winhall	0.00	0.00	0.00	6,380.31	0.00	6,380.31
Kitchen Residence	Winhall	0.00	0.00	0.00	2,567.63	0.00	2,567.63
Former K & L Quick Stop	Winooski	1,696.04	0.00	1,696.04	5,020.30	0.00	6,716.34
Dufresne Service Ctr	Winooski	928.74	0.00	928.74	32,550.27	24.55	33,503.56
Winooski Exxon	Winooski	2,841.16	0.00	2,841.16	578,161.19	0.00	581,002.35
St Michael's College	Winooski	8,034.09	0.00	8,034.09	75,012.77	0.00	83,046.86
Wiggins Concrete	Winooski	2,217.94	0.00	2,217.94	0.00	0.00	2,217.94
Winooski Go-Go Gas	Winooski	0.00	0.00	0.00	221,142.23	0.00	221,142.23
St Francis Church Rectory	Winooski	0.00	0.00	0.00	8,711.66	0.00	8,711.66
Labounty Residence	Winooski	0.00	0.00	0.00	3,583.81	0.00	3,583.81
Winooski River - Intervale Ave	Winooski	0.00	0.00	0.00	280.00	0.00	280.00
R & R Garage	Winooski	0.00	0.00	0.00	26,815.32	0.00	26,815.32
Wolcott Store	Wolcott	6,315.30	1,749.09	8,064.39	124,782.09	13,430.72	146,277.20
Woodbury Country Store	Woodbury	0.00	0.00	0.00	13,186.01	0.00	13,186.01
Avalon Motel	Woodford	0.00	0.00	0.00	12,596.00	0.00	12,596.00
Thompson's Garage	Woodstock	0.00	0.00	0.00	304,836.54	1,151.47	305,988.01
Woodstock Elem School	Woodstock	0.00	0.00	0.00	385,254.75	0.00	385,254.75
Richmond Ford	Woodstock	58.75	0.00	58.75	16,204.00	0.00	16,262.75
F. A. Richmond Gulf	Woodstock	9,056.90	0.00	9,056.90	23,883.29	0.00	32,940.19
Woodstock Library	Woodstock	0.00	0.00	0.00	11,252.47	0.00	11,252.47
Willis Property	Woodstock	0.00	0.00	0.00	2,786.68	0.00	2,786.68
former A and B Motors	Woodstock	0.00	0.00	0.00	7,847.15	0.00	7,847.15
Caselli Property	Woodstock	0.00	0.00	0.00	2,266.80	0.00	2,266.80
Johnson & Dix	Woodstock	0.00	0.00	0.00	29,483.83	130.00	29,613.83
LBJ's Market	Worcester	0.00	0.00	0.00	4,670.25	0.00	4,670.25
Legal Services		0.00	70,000.00	70,000.00	74,600.00	0.00	144,600.00
Loan Program		(4,900.00)	0.00	(4,900.00)	6,674,008.53	600.00	6,669,708.53
Sec. 1926 Sites		0.00	0.00	0.00	89,578.50	0.00	89,578.50
Spill Response		0.00	0.00	0.00	4,579.66	0.00	4,579.66
General Expenses		550.00	0.00	550.00	435,058.38	5,761.38	441,369.76
TOTAL EXPENSE		1,362,708.09	237,606.10	1,600,314.19	62,219,621.36	3,150,425.23	66,970,360.78

		1,367,058.09	167,606.10	1,534,664.19	54,941,796.29	3,144,063.85	59,620,524.33
Total Sites: 878							

⁽¹⁾ Does not include:

Admin. Assessment	\$229,160
HHF Transfer	\$1,416,333
Administrative Costs	\$2,926,593
Transfer to Gen'l Fund	\$5,501,000
	\$10,073,086

Attachment 3
Petroleum Cleanup Fund
Expenditures by Site Through October 2006
Heating Oil

PCF Site Name	Site Location	Motor Fuel Historical (through June 2004)			Fuel (current year's	Heating Fuel Historical	Total Historical	GRAND (1) TOTAL
		Prior Years Remediation	Prior Years 3rd Party	Prior Years Total	Current Year Total Remediation	Prior Years Total HF Remediation	Prior Years Total MF & PY Total HF	
Black River Farm	Albany	2,768.71	0.00	2,768.71	0.00	365.26	3,133.97	3,133.97
Fiarski Residence	Alburg	0.00	0.00	0.00	2,298.90	13,726.58	13,726.58	16,025.48
Scarlett Property	Alburg	0.00	0.00	0.00	6,392.33	0.00	0.00	6,392.33
Miller Residence	Alburg	15,915.30	0.00	15,915.30	0.00	0.00	15,915.30	15,915.30
Hilltop Farm	Andover	8,849.48	0.00	8,849.48	0.00	0.00	8,849.48	8,849.48
Phyllis Warren Residence	Arlington	18,137.30	380.00	18,517.30	0.00	2,369.92	20,887.22	20,887.22
Buck Residence	Arlington	2,088.52	0.00	2,088.52	0.00	0.00	2,088.52	2,088.52
Twin Farms	Barnard	0.00	0.00	0.00	2,924.44	5,341.68	5,341.68	8,266.12
Whitehead Residence	Barnard	8,727.38	0.00	8,727.38	0.00	0.00	8,727.38	8,727.38
Paul DeLuca Residence	Barre City	0.00	0.00	0.00	0.00	1,963.51	1,963.51	1,963.51
Ormsby Residence	Barre City	0.00	0.00	0.00	0.00	4,240.51	4,240.51	4,240.51
Brandy Residence	Barre City	0.00	0.00	0.00	7,160.45	0.00	0.00	7,160.45
Milan Residence	Barre City	7,372.79	0.00	7,372.79	0.00	0.00	7,372.79	7,372.79
Kent Place Apts	Barre City	0.00	0.00	0.00	0.00	3,255.94	3,255.94	3,255.94
Consolidated Memorials	Barre City	0.00	0.00	0.00	17,097.50	0.00	0.00	17,097.50
Olender Residence	Barre City	250.00	0.00	250.00	0.00	0.00	250.00	250.00
Washington Apartments	Barre City	83,234.69	0.00	83,234.69	0.00	0.00	83,234.69	83,234.69
Lafirria Residence	Barre Town	24,991.53	0.00	24,991.53	0.00	0.00	24,991.53	24,991.53
Hrabushi Residence	Barre Town	0.00	0.00	0.00	0.00	4,450.50	4,450.50	4,450.50
former Barton Cleaners	Barton	0.00	0.00	0.00	3,161.45	19,544.99	19,544.99	22,706.44
Ted Williams Residence	Barton	0.00	0.00	0.00	0.00	12,215.50	12,215.50	12,215.50
Demaris Residence	Barton	0.00	0.00	0.00	2,057.45	6,489.07	6,489.07	8,546.52
former Frink Residence	Bellows Falls	0.00	0.00	0.00	10,241.26	0.00	0.00	10,241.26
Scarpinato Property	Belvidere	0.00	0.00	0.00	0.00	16,923.37	16,923.37	16,923.37
172 Berlin Street	Bennington	1,897.73	0.00	1,897.73	0.00	5,812.30	7,710.03	7,710.03
Haynes & Kane, Inc	Bennington	23,950.48	0.00	23,950.48	0.00	1,799.32	25,749.80	25,749.80
Benn Cnty Indust Corp	Bennington	300,568.68	0.00	300,568.68	13,184.83	64,750.83	365,319.51	378,504.34
Bennington College	Bennington	201,090.47	0.00	201,090.47	0.00	244.45	201,334.92	201,334.92
Morse Block	Bennington	15,340.77	0.00	15,340.77	2,572.05	2,736.14	18,076.91	20,648.96
Cumberland Farms #4006	Bennington	8,009.52	0.00	8,009.52	0.00	0.00	8,009.52	8,009.52
Morrison Property	Bennington	37,716.01	0.00	37,716.01	0.00	0.00	37,716.01	37,716.01
120 BenMont Ave	Bennington	16,930.31	0.00	16,930.31	0.00	0.00	16,930.31	16,930.31
Orchard "B" House - Bennington Coll	Bennington	0.00	0.00	0.00	0.00	8,797.49	8,797.49	8,797.49
Orchard "F" House - Bennington Coll	Bennington	0.00	0.00	0.00	1,708.42	7,998.09	7,998.09	9,706.51
Vermont Motor Lodge	Bennington	0.00	0.00	0.00	0.00	6,332.21	6,332.21	6,332.21
Sausville Residence	Bennington	956.99	0.00	956.99	0.00	0.00	956.99	956.99
Sadie Sweet Residence	Bennington	11,190.44	0.00	11,190.44	0.00	820.46	12,010.90	12,010.90
Colliano Property	Bennington	0.00	0.00	0.00	406.62	0.00	0.00	406.62
Beach St School	Bennington	68,896.42	0.00	68,896.42	0.00	0.00	68,896.42	68,896.42
Tansitor Electronics	Bennington	6,525.02	0.00	6,525.02	0.00	0.00	6,525.02	6,525.02
Benson Town Offices	Benson	0.00	0.00	0.00	12,322.50	0.00	0.00	12,322.50
Park Hill road	Benson	405.00	0.00	405.00	0.00	0.00	405.00	405.00
John Steinman Property	Berlin	6,906.14	0.00	6,906.14	0.00	0.00	6,906.14	6,906.14
Rossi Residence	Berlin	0.00	0.00	0.00	2,586.50	6,304.85	6,304.85	8,891.35
Lague Trailer Park	Berlin	21,808.32	0.00	21,808.32	0.00	0.00	21,808.32	21,808.32
River Run	Berlin	9,392.67	0.00	9,392.67	0.00	0.00	9,392.67	9,392.67
Route 12	Berlin	19,014.09	0.00	19,014.09	0.00	0.00	19,014.09	19,014.09
Waring Property	Bethel	0.00	0.00	0.00	2,522.66	0.00	0.00	2,522.66
Mears Residence	Bethel	3,860.00	0.00	3,860.00	0.00	0.00	3,860.00	3,860.00
Kelly Residence	Bloomfield	13,095.08	0.00	13,095.08	0.00	0.00	13,095.08	13,095.08
Smilie Elem School	Bolton	14,473.32	0.00	14,473.32	0.00	0.00	14,473.32	14,473.32
Peavey Apartment House	Bradford	0.00	0.00	0.00	26,959.21	17,993.95	17,993.95	44,953.16
ARC Mechanical Contractors	Bradford	6,131.95	0.00	6,131.95	0.00	9,465.50	15,597.45	15,597.45
Merry Meadow Farm	Bradford	6,698.49	0.00	6,698.49	0.00	0.00	6,698.49	6,698.49
Pomainville Residence	Brandon	0.00	0.00	0.00	0.00	1,559.35	1,559.35	1,559.35
Brandon Inn	Brandon	36,113.71	0.00	36,113.71	0.00	0.00	36,113.71	36,113.71
Kresges Auto	Brattleboro	4,242.39	0.00	4,242.39	0.00	1,300.10	5,542.49	5,542.49
Brattleboro Memorial Hospital	Brattleboro	18,916.48	0.00	18,916.48	0.00	3,530.16	22,446.64	22,446.64
Elinski Residence	Brattleboro	7,515.61	0.00	7,515.61	0.00	0.00	7,515.61	7,515.61
Steve Macie Residence	Brattleboro	1,737.40	0.00	1,737.40	0.00	0.00	1,737.40	1,737.40
Thomas St John Property	Brattleboro	5,362.84	0.00	5,362.84	0.00	0.00	5,362.84	5,362.84
Robert Banford Residence	Brattleboro	2,892.22	0.00	2,892.22	0.00	0.00	2,892.22	2,892.22
Roberts Residence	Brattleboro	0.00	0.00	0.00	1,923.24	0.00	0.00	1,923.24
Karen Roberts Residence	Brattleboro	0.00	0.00	0.00	3,320.43	0.00	0.00	3,320.43
Nason Residence	Brattleboro	6,075.94	0.00	6,075.94	0.00	0.00	6,075.94	6,075.94
Hickory Residence	Bridgewater	9,896.08	256.00	10,152.08	0.00	0.00	10,152.08	10,152.08
Bridgewater Elem Sch.	Bridgewater	20,486.50	0.00	20,486.50	0.00	0.00	20,486.50	20,486.50
Valleamar Farms	Bristol	0.00	0.00	0.00	0.00	2,337.03	2,337.03	2,337.03
Allen Residence	Bristol	12,810.31	0.00	12,810.31	0.00	0.00	12,810.31	12,810.31
Hammond Residence	Brookfield	16,701.96	0.00	16,701.96	0.00	2,098.07	18,800.03	18,800.03
Allen Residence	Brookfield	1,950.75	0.00	1,950.75	0.00	16,111.22	18,061.97	18,061.97
Silvius Residence	Burke	0.00	0.00	0.00	2,585.60	0.00	0.00	2,585.60
VT Railway	Burlington	0.00	0.00	0.00	0.00	1,012.27	1,012.27	1,012.27
Sears Lane	Burlington	16,705.90	0.00	16,705.90	2,456.12	5,601.72	22,307.62	24,763.74
Taft School	Burlington	7,690.52	0.00	7,690.52	935.28	679.54	8,370.06	9,305.34
Burlington Public Works	Burlington	5,156.33	0.00	5,156.33	0.00	0.00	5,156.33	5,156.33
Dirmaier Residence	Burlington	15,958.37	0.00	15,958.37	0.00	2,350.85	18,309.22	18,309.22
Hemley Residence	Burlington	0.00	0.00	0.00	0.00	7,945.41	7,945.41	7,945.41

Attachment 3
Petroleum Cleanup Fund
Expenditures by Site Through October 2006
Heating Oil

PCF Site Name	Site Location	Motor Fuel Historical (through June 2004)			Fuel (current year's	Heating Fuel Historical	Total Historical	GRAND (1) TOTAL
		Prior Years Remediation	Prior Years 3rd Party	Prior Years Total	Current Year Total Remediation	Prior Years Total HF Remediation	Prior Years Total MF & PY Total HF	
Westwind Cono Association	Burlington	0.00	0.00	0.00	7,438.88	0.00	0.00	7,438.88
Champlain College - Pearl Annex	Burlington	0.00	0.00	0.00	0.00	69,192.00	69,192.00	69,192.00
Phelps-Kinsey Residence	Burlington	0.00	0.00	0.00	0.00	1,451.29	1,451.29	1,451.29
Chittenden Cty Courthouse	Burlington	0.00	0.00	0.00	7,091.42	3,786.50	3,786.50	10,877.92
Converse House	Burlington	0.00	0.00	0.00	4,427.47	0.00	0.00	4,427.47
Does Residence	Burlington	0.00	0.00	0.00	15,759.14	0.00	0.00	15,759.14
Mason Residence	Burlington	0.00	0.00	0.00	0.00	1,146.49	1,146.49	1,146.49
20 Rock Point Circle	Burlington	8,710.63	0.00	8,710.63	0.00	0.00	8,710.63	8,710.63
Lloyd Residence	Burlington	6,893.00	0.00	6,893.00	0.00	3,858.40	10,751.40	10,751.40
Reed Residence	Burlington	1,475.00	0.00	1,475.00	0.00	0.00	1,475.00	1,475.00
Marzewski Residence	Burlington	0.00	0.00	0.00	2,130.69	11,214.47	11,214.47	13,345.16
Sullivan Residence	Burlington	0.00	0.00	0.00	3,610.29	0.00	0.00	3,610.29
380 Maple Street	Burlington	306.50	0.00	306.50	0.00	0.00	306.50	306.50
Fletcher Residence	Burlington	5,856.37	0.00	5,856.37	0.00	0.00	5,856.37	5,856.37
Maynard Auto Supply	Burlington	4,805.85	0.00	4,805.85	0.00	0.00	4,805.85	4,805.85
Water System Upgrade	Cabot	23,223.00	8,355.96	31,578.96	0.00	0.00	31,578.96	31,578.96
Jones Residence	Cabot	25,000.00	0.00	25,000.00	0.00	0.00	25,000.00	25,000.00
Fellows Property	Calais	1,161.96	0.00	1,161.96	0.00	331.95	1,493.91	1,493.91
Sheldon Residence	Calais	17,910.84	7,975.92	25,886.76	0.00	0.00	25,886.76	25,886.76
Hobbs Residence	Cambridge	0.00	0.00	0.00	2,097.05	0.00	0.00	2,097.05
Garamella Property	Cambridge	15,700.66	0.00	15,700.66	0.00	0.00	15,700.66	15,700.66
Bardusk Residence	Cambridge	0.00	0.00	0.00	0.00	13,117.36	13,117.36	13,117.36
Drinkwine Residence	Cambridge	0.00	0.00	0.00	14,098.56	0.00	0.00	14,098.56
Jones Residence	Cambridge	670.00	0.00	670.00	0.00	0.00	670.00	670.00
Bamforth Residence	Castleton	10,202.44	209.80	10,412.24	0.00	0.00	10,412.24	10,412.24
Diehl Residence	Castleton	0.00	0.00	0.00	0.00	3,430.26	3,430.26	3,430.26
Howe Residence	Castleton	0.00	0.00	0.00	18,024.21	0.00	0.00	18,024.21
West Charleston Town Garage	Charleston	0.00	0.00	0.00	0.00	3,541.49	3,541.49	3,541.49
Seeley Residence	Charlotte	0.00	0.00	0.00	0.00	1,991.42	1,991.42	1,991.42
Boden Residence	Charlotte	0.00	0.00	0.00	2,250.21	0.00	0.00	2,250.21
Inn at Charlotte	Charlotte	0.00	0.00	0.00	4,001.28	12,306.99	12,306.99	16,308.27
Gellis Residence	Charlotte	0.00	0.00	0.00	8,078.79	3,175.59	3,175.59	11,254.38
Woodruff Residence	Charlotte	0.00	0.00	0.00	0.00	3,586.77	3,586.77	3,586.77
Sheuer Property	Charlotte	0.00	0.00	0.00	2,581.05	0.00	0.00	2,581.05
Charlotte Masonic Lodge	Charlotte	388.35	1,316.70	1,705.05	0.00	6,891.08	8,596.13	8,596.13
Plouffe Farm	Charlotte	17,788.20	0.00	17,788.20	721.50	1,300.25	19,088.45	19,809.95
Byrne Residence	Charlotte	0.00	0.00	0.00	0.00	1,262.20	1,262.20	1,262.20
Dion Residence	Charlotte	0.00	0.00	0.00	0.00	12,941.02	12,941.02	12,941.02
Zilco Residence	Charlotte	0.00	0.00	0.00	0.00	13,790.71	13,790.71	13,790.71
Gagnon Kerosene Spill	Chester	20,111.69	0.00	20,111.69	0.00	0.00	20,111.69	20,111.69
Winnicki Residence	Chester	13,733.33	0.00	13,733.33	0.00	0.00	13,733.33	13,733.33
Holton Residence	Chester	4,569.45	0.00	4,569.45	0.00	0.00	4,569.45	4,569.45
AOT Right-of-Way	Chester	1,115.82	0.00	1,115.82	0.00	0.00	1,115.82	1,115.82
Stoddard	Chester	14,738.39	14,724.57	29,462.96	0.00	0.00	29,462.96	29,462.96
Weiss Residence	Chester	4,639.90	0.00	4,639.90	0.00	0.00	4,639.90	4,639.90
Bassett/Wheeler Mobil Home	Chittenden	0.00	0.00	0.00	0.00	18,023.30	18,023.30	18,023.30
Frey Residence	Chittenden	0.00	0.00	0.00	10,527.36	0.00	0.00	10,527.36
Craig Billings Property	Clarendon	17,904.79	0.00	17,904.79	0.00	0.00	17,904.79	17,904.79
Booth Residence	Clarendon	14,485.19	0.00	14,485.19	0.00	0.00	14,485.19	14,485.19
Nichols Property	Colchester	0.00	0.00	0.00	2,875.45	2,355.56	2,355.56	5,231.01
Bombard Residence	Colchester	7,588.90	0.00	7,588.90	0.00	589.60	8,178.50	8,178.50
Bernie Stone Residence	Colchester	0.00	0.00	0.00	0.00	20,999.33	20,999.33	20,999.33
Nichols Property	Colchester	0.00	0.00	0.00	250.00	3,993.94	3,993.94	4,243.94
Chrystal Leclerc Residence	Coventry	0.00	0.00	0.00	0.00	15,197.91	15,197.91	15,197.91
Young Farm	Craftsbury	131.32	0.00	131.32	0.00	0.00	131.32	131.32
Hogle Residence	Danby	0.00	0.00	0.00	4,436.80	0.00	0.00	4,436.80
Mitchell Residence	Danville	13,794.24	0.00	13,794.24	0.00	0.00	13,794.24	13,794.24
Pelletier Residence	Danville	21,671.66	0.00	21,671.66	0.00	1,174.35	22,846.01	22,846.01
Marsh Residence	Derby	114,535.61	0.00	114,535.61	12,037.18	43,908.33	158,443.94	170,481.12
Jenness Residence	Derby	13,540.76	0.00	13,540.76	688.17	1,668.80	15,209.56	15,897.73
Fred's Plumbing & Heating	Derby	7,222.07	0.00	7,222.07	0.00	0.00	7,222.07	7,222.07
Derby Spill	Derby	9,701.46	0.00	9,701.46	0.00	0.00	9,701.46	9,701.46
Moulton Residence	Dover	0.00	0.00	0.00	1,572.67	0.00	0.00	1,572.67
A.O.T.	Dummerston	0.00	0.00	0.00	0.00	260.00	260.00	260.00
Cherryholmes Residence	Duxbury	6,121.89	0.00	6,121.89	0.00	11,556.68	17,678.57	17,678.57
Maple Street	East Haven	4,406.45	0.00	4,406.45	0.00	0.00	4,406.45	4,406.45
Schultz Residence	Eden	18,173.96	0.00	18,173.96	0.00	2,475.69	20,649.65	20,649.65
Kevin Bellevue Residence	Enosburg	10,905.48	0.00	10,905.48	0.00	576.75	11,482.23	11,482.23
Lauffer Residence	Enosburg	0.00	0.00	0.00	0.00	25,545.99	25,545.99	25,545.99
Bueso-Giffin Residence	Enosburg Falls	0.00	0.00	0.00	2,293.00	0.00	0.00	2,293.00
Robinsons Inc	Essex	8,627.59	0.00	8,627.59	0.00	0.00	8,627.59	8,627.59
Park's Residence	Essex	3,664.66	226.25	3,890.91	0.00	197.50	4,088.41	4,088.41
Taylor Residence	Essex	9,141.49	0.00	9,141.49	0.00	0.00	9,141.49	9,141.49
Miller Residence	Essex	0.00	0.00	0.00	0.00	518.75	518.75	518.75
Miller Residence	Essex	0.00	0.00	0.00	2,424.85	0.00	0.00	2,424.85
Rogers Residence	Essex	0.00	0.00	0.00	1,429.75	1,708.00	1,708.00	3,137.75
Beilstein Residence	Essex	0.00	0.00	0.00	0.00	11,917.85	11,917.85	11,917.85
Gaskins Residence	Essex	0.00	0.00	0.00	6,417.35	0.00	0.00	6,417.35

Attachment 3
Petroleum Cleanup Fund
Expenditures by Site Through October 2006
Heating Oil

PCF Site Name	Site Location	Motor Fuel Historical (through June 2004)			Fuel (current year's	Heating Fuel Historical	Total Historical	GRAND (1) TOTAL
		Prior Years Remediation	Prior Years 3rd Party	Prior Years Total	Current Year Total Remediation	Prior Years Total HF Remediation	Prior Years Total MF & PY Total HF	
Peshkin Residence	Essex	0.00	0.00	0.00	8,221.63	0.00	0.00	8,221.63
Rome Residence	Essex	0.00	0.00	0.00	2,147.00	0.00	0.00	2,147.00
Duff Residence	Essex	0.00	0.00	0.00	0.00	0.00	0.00	0.00
Martin Residence	Essex	10,374.89	0.00	10,374.89	0.00	0.00	10,374.89	10,374.89
East Creek Condos	Essex	0.00	65.63	65.63	0.00	17,445.75	17,511.38	17,511.38
Noah McDermott Property	Fair Haven	158.00	0.00	158.00	0.00	4,220.75	4,378.75	4,378.75
Beaudoin Property	Fairfax	0.00	0.00	0.00	18,503.53	0.00	0.00	18,503.53
Graves Residence	Fairfax	22,265.62	0.00	22,265.62	0.00	0.00	22,265.62	22,265.62
Perrault Residence	Fairfield	0.00	0.00	0.00	979.90	11,781.72	11,781.72	12,761.62
Saladino Residence	Fairlee	4,270.70	0.00	4,270.70	0.00	0.00	4,270.70	4,270.70
Benjamin Property	Fayston	0.00	0.00	0.00	9,552.62	0.00	0.00	9,552.62
Wallingford Property	Fayston	0.00	0.00	0.00	4,415.89	0.00	0.00	4,415.89
Mad River Glen Ski Area	Fayston	4,713.18	0.00	4,713.18	0.00	0.00	4,713.18	4,713.18
Devine Sales & Service	Ferrisburg	0.00	0.00	0.00	1,174.27	0.00	0.00	1,174.27
Roberts Residence	Ferrisburg	8,305.51	1,422.90	9,728.41	0.00	0.00	9,728.41	9,728.41
Fletcher Grange Hall	Fletcher	0.00	0.00	0.00	0.00	4,446.00	4,446.00	4,446.00
Geraw Residence	Franklin	2,376.65	0.00	2,376.65	0.00	0.00	2,376.65	2,376.65
Pierce Farm	Franklin	10,170.36	30,619.94	40,790.30	0.00	0.00	40,790.30	40,790.30
Dean Residence	Georgia	3,894.50	0.00	3,894.50	0.00	965.50	4,860.00	4,860.00
Pomerico Residence	Georgia	0.00	0.00	0.00	10,000.69	0.00	0.00	10,000.69
Georgia School	Georgia	39,309.05	0.00	39,309.05	0.00	0.00	39,309.05	39,309.05
Former Brooks' Estate	Glover	6,838.96	0.00	6,838.96	0.00	0.00	6,838.96	6,838.96
Goshen Town Offices	Goshen	0.00	0.00	0.00	17,614.22	7,165.78	7,165.78	24,780.00
Thompson Residence	Grafton	0.00	0.00	0.00	0.00	49.20	49.20	49.20
Pratt Residence	Grand Isle	5,858.30	632.60	6,490.90	0.00	0.00	6,490.90	6,490.90
Rosenberger Residence	Grand Isle	0.00	0.00	0.00	4,230.93	0.00	0.00	4,230.93
Camp Mary Crest	Grand Isle	6,630.50	0.00	6,630.50	0.00	0.00	6,630.50	6,630.50
Robertson Residence	Grand Isle	3,691.00	0.00	3,691.00	0.00	0.00	3,691.00	3,691.00
Freeman Residence	Greensboro	0.00	0.00	0.00	0.00	7,462.29	7,462.29	7,462.29
Garland Residence	Guilford	0.00	0.00	0.00	0.00	1,461.31	1,461.31	1,461.31
Garland Spill	Guilford	0.00	0.00	0.00	0.00	8,603.28	8,603.28	8,603.28
Brown Residence	Hancock	0.00	0.00	0.00	25,000.00	0.00	0.00	25,000.00
Earl Long Residence	Hancock	455.70	0.00	455.70	0.00	0.00	455.70	455.70
Cady Residence	Hardwick	0.00	0.00	0.00	12,082.95	0.00	0.00	12,082.95
Hardwick Treatment Fac.	Hardwick	4,368.79	0.00	4,368.79	0.00	0.00	4,368.79	4,368.79
Highland Hills Spill - 99034	Hardwick	3,946.01	0.00	3,946.01	0.00	0.00	3,946.01	3,946.01
West Hill Road Spill	Hardwick	21,578.16	0.00	21,578.16	0.00	0.00	21,578.16	21,578.16
Whipple Residence	Hardwick	2,503.86	0.00	2,503.86	0.00	0.00	2,503.86	2,503.86
Thibideau Property	Hartford	31,030.30	0.00	31,030.30	0.00	0.00	31,030.30	31,030.30
Pappas Residence	Hartford	0.00	0.00	0.00	0.00	2,373.77	2,373.77	2,373.77
Calef Residence	Hartford	15,809.26	0.00	15,809.26	0.00	0.00	15,809.26	15,809.26
Bucklin Residence	Hartford	1,716.10	0.00	1,716.10	0.00	0.00	1,716.10	1,716.10
Martaniuk Residence	Hartford	0.00	0.00	0.00	0.00	3,616.95	3,616.95	3,616.95
Leonard Residence	Hartford	0.00	0.00	0.00	10,491.92	0.00	0.00	10,491.92
Gifford Residence	Hartford	11,311.39	0.00	11,311.39	0.00	0.00	11,311.39	11,311.39
O'Brien Residence	Hartford	1,187.00	0.00	1,187.00	0.00	0.00	1,187.00	1,187.00
Varney Trucking	Hartland	12,974.94	0.00	12,974.94	0.00	0.00	12,974.94	12,974.94
Jayrox Residence	Hartland	25,000.00	0.00	25,000.00	0.00	0.00	25,000.00	25,000.00
Alice White Residence	Hartland	865.55	0.00	865.55	0.00	0.00	865.55	865.55
Hartland Spill	Hartland	8,488.39	0.00	8,488.39	0.00	0.00	8,488.39	8,488.39
Missisquoi High School	Highgate	0.00	0.00	0.00	0.00	0.00	0.00	0.00
Morgante Residence	Hinesburg	0.00	0.00	0.00	0.00	6,615.98	6,615.98	6,615.98
Habitat House	Hinesburg	0.00	0.00	0.00	617.50	11,549.89	11,549.89	12,167.39
Bissonette Farm	Hinesburg	0.00	0.00	0.00	6,060.00	0.00	0.00	6,060.00
Priest Residence	Hinesburg	305.00	0.00	305.00	0.00	0.00	305.00	305.00
Charland-Sweeney Residence	Hinesburg	0.00	12,692.91	12,692.91	0.00	1,279.75	13,972.66	13,972.66
Hinesburg Elem School	Hinesburg	50,368.58	0.00	50,368.58	0.00	0.00	50,368.58	50,368.58
Herber Residence	Hubbardton	0.00	0.00	0.00	25,000.00	0.00	0.00	25,000.00
Mountainview Trtmt Ctr	Huntington	4,380.45	0.00	4,380.45	0.00	0.00	4,380.45	4,380.45
Bert White Residence	Huntington	0.00	0.00	0.00	0.00	1,591.66	1,591.66	1,591.66
Burt White Residence	Huntington	6,282.77	0.00	6,282.77	254.74	8,382.00	14,664.77	14,919.51
Norton Residence	Huntington	3,315.87	0.00	3,315.87	0.00	0.00	3,315.87	3,315.87
Common Ground	Hyde Park	23,923.72	0.00	23,923.72	0.00	0.00	23,923.72	23,923.72
238 Ferry St	Hyde Park	660.30	1,674.84	2,335.14	164.70	16,591.59	18,926.73	19,091.43
Moore Property	Hyde Park	0.00	0.00	0.00	0.00	7,942.34	7,942.34	7,942.34
Hill Property	Isle La Motte	0.00	0.00	0.00	3,299.11	0.00	0.00	3,299.11
Fleury Residence	Isle La Motte	0.00	0.00	0.00	20,145.27	0.00	0.00	20,145.27
Videgain Property	Jamaica	0.00	1,453.66	1,453.66	517.13	5,323.21	6,776.87	7,294.00
Prindle Residence	Jamaica	0.00	0.00	0.00	0.00	374.90	374.90	374.90
Comardo Residence	Jamaica	10,899.66	0.00	10,899.66	0.00	0.00	10,899.66	10,899.66
Curran Residence	Jericho	0.00	0.00	0.00	0.00	2,578.86	2,578.86	2,578.86
Doering Residence	Jericho	24,376.19	0.00	24,376.19	0.00	0.00	24,376.19	24,376.19
Jaquish Residence	Johnson	14,276.78	0.00	14,276.78	0.00	0.00	14,276.78	14,276.78
Brad Moore Property	Johnson	0.00	0.00	0.00	0.00	8,484.88	8,484.88	8,484.88
Stambersky Residence	Killington	52,285.70	0.00	52,285.70	0.00	0.00	52,285.70	52,285.70
Wideawake Residence	Leicester	23,624.56	0.00	23,624.56	0.00	0.00	23,624.56	23,624.56
Osorino Residence	Lemington	0.00	0.00	0.00	2,692.50	0.00	0.00	2,692.50

Attachment 3
Petroleum Cleanup Fund
Expenditures by Site Through October 2006
Heating Oil

PCF Site Name	Site Location	Motor Fuel Historical (through June 2004)			Fuel (current year's	Heating Fuel Historical	Total Historical	GRAND (1) TOTAL
		Prior Years Remediation	Prior Years 3rd Party	Prior Years Total	Current Year Total Remediation	Prior Years Total HF Remediation	Prior Years Total MF & PY Total HF	
Strickholm Farm	Lincoln	0.00	0.00	0.00	0.00	2,596.87	2,596.87	2,596.87
South Lincoln Farm	Lincoln	0.00	0.00	0.00	0.00	3,767.65	3,767.65	3,767.65
Quatrocci Property	Lincoln	2,250.01	0.00	2,250.01	0.00	0.00	2,250.01	2,250.01
Cavanaugh Residence	Londonderry	0.00	0.00	0.00	0.00	2,976.72	2,976.72	2,976.72
Lena Murphy Residence	Lowell	0.00	0.00	0.00	372.50	18,630.82	18,630.82	19,003.32
Holden Residence	Ludlow	0.00	0.00	0.00	0.00	5,425.94	5,425.94	5,425.94
McBride Residence	Ludlow	0.00	0.00	0.00	0.00	6,688.72	6,688.72	6,688.72
Bowers Residence	Ludlow	0.00	0.00	0.00	0.00	2,506.80	2,506.80	2,506.80
Dominello Residence	Ludlow	4,083.93	0.00	4,083.93	0.00	0.00	4,083.93	4,083.93
Gilman Middle School	Lunenburg	4,035.70	0.00	4,035.70	0.00	0.00	4,035.70	4,035.70
Turcotte Residence	Lyndon	0.00	0.00	0.00	0.00	12,459.05	12,459.05	12,459.05
Northeast Kingdom Trailer Park	Lyndon	0.00	0.00	0.00	0.00	3,431.49	3,431.49	3,431.49
Former Elliots Greenhouse	Lyndon	0.00	0.00	0.00	9,169.35	4,288.01	4,288.01	13,457.36
Heaslip Fuels	Manchester	0.00	0.00	0.00	651.54	0.00	0.00	651.54
Four Winds Motel	Manchester	14,363.22	0.00	14,363.22	0.00	1,153.60	15,516.82	15,516.82
Vogeler Residence	Manchester	0.00	0.00	0.00	0.00	6,264.81	6,264.81	6,264.81
Designer Outlet	Manchester	5,800.00	0.00	5,800.00	0.00	0.00	5,800.00	5,800.00
Heaslip Fuels	Manchester	19,261.62	0.00	19,261.62	0.00	0.00	19,261.62	19,261.62
Perras Residence	Manchester	8,285.65	0.00	8,285.65	0.00	0.00	8,285.65	8,285.65
Marlboro Elementary School	Marlboro	0.00	0.00	0.00	0.00	8,541.53	8,541.53	8,541.53
Goldman Residence	Marlboro	1,386.56	0.00	1,386.56	0.00	0.00	1,386.56	1,386.56
Carris Residence	Marshfield	24,126.67	0.00	24,126.67	0.00	2,467.75	26,594.42	26,594.42
Cruz Residence	Marshfield	5,598.75	0.00	5,598.75	0.00	0.00	5,598.75	5,598.75
Middlebury College	Middlebury	4,633.84	0.00	4,633.84	301.48	2,339.71	6,973.55	7,275.03
Middlebury Apt Fuel Oil Release	Middlebury	47,184.67	1,523.74	48,708.41	0.00	0.00	48,708.41	48,708.41
Middlebury Shopping Center	Middlebury	0.00	0.00	0.00	10,718.75	0.00	0.00	10,718.75
Former Masonic Hall	Middlebury	14,547.59	0.00	14,547.59	0.00	0.00	14,547.59	14,547.59
Olsen Residence	Middlesex	0.00	0.00	0.00	2,071.00	0.00	0.00	2,071.00
Williams Residence	Middlesex	0.00	0.00	0.00	757.50	24,011.15	24,011.15	24,768.65
Arsenault Residence	Middletown Springs	0.00	0.00	0.00	7,167.85	16,367.37	16,367.37	23,535.22
Francis Residence	Milton	0.00	0.00	0.00	3,337.25	19,133.24	19,133.24	22,470.49
Sperling Residence	Milton	0.00	0.00	0.00	0.00	7,326.87	7,326.87	7,326.87
Tina Terry Residence	Milton	8,358.35	0.00	8,358.35	0.00	0.00	8,358.35	8,358.35
Sperling Property	Milton	15,897.21	0.00	15,897.21	0.00	2,254.97	18,152.18	18,152.18
James Ford Residence	Milton	0.00	0.00	0.00	442.50	30,364.66	30,364.66	30,807.16
Wayland Wheelock Residence	Milton	0.00	0.00	0.00	0.00	7,220.22	7,220.22	7,220.22
Bergstrom Residence	Milton	4,127.50	0.00	4,127.50	0.00	0.00	4,127.50	4,127.50
Crossview Farm	Monkton	2,164.15	0.00	2,164.15	0.00	0.00	2,164.15	2,164.15
Tisdale Residence	Montpelier	11,711.62	0.00	11,711.62	2,022.96	4,876.05	16,587.67	18,610.63
Walker Motors	Montpelier	64,140.81	0.00	64,140.81	2,524.35	14,536.62	78,677.43	81,201.78
Sherwin Williams	Montpelier	0.00	0.00	0.00	0.00	66,634.01	66,634.01	66,634.01
Trading Post	Montpelier	0.00	0.00	0.00	1,553.48	6,428.75	6,428.75	7,982.23
Williams Residence	Montpelier	0.00	0.00	0.00	0.00	4,458.30	4,458.30	4,458.30
Glottman Residence	Montpelier	3,760.06	0.00	3,760.06	0.00	0.00	3,760.06	3,760.06
Trading Post	Montpelier	3,797.80	0.00	3,797.80	0.00	0.00	3,797.80	3,797.80
Erskine Residence	Montpelier	0.00	0.00	0.00	6,260.63	0.00	0.00	6,260.63
Archer-Brown Property	Montpelier	1,467.50	0.00	1,467.50	0.00	0.00	1,467.50	1,467.50
GrandafLaura Apartments	Montpelier	(7,978.12)	0.00	(7,978.12)	0.00	0.00	(7,978.12)	(7,978.12)
Jacobs' Property	Montpelier	137,818.69	1,405.50	139,224.19	0.00	0.00	139,224.19	139,224.19
Lagare Farm	Montpelier	25,000.00	0.00	25,000.00	0.00	0.00	25,000.00	25,000.00
Montpelier Stove Works	Montpelier	7,932.00	0.00	7,932.00	0.00	0.00	7,932.00	7,932.00
Pedrozo Property	Montpelier	17,201.40	0.00	17,201.40	0.00	0.00	17,201.40	17,201.40
Pratt Residence	Montpelier	22,597.05	0.00	22,597.05	0.00	0.00	22,597.05	22,597.05
Taylor Appliance	Montpelier	7,833.82	0.00	7,833.82	0.00	0.00	7,833.82	7,833.82
Town Clerks	Moretown	0.00	0.00	0.00	2,211.75	7,621.15	7,621.15	9,832.90
Moretown Common	Moretown	608.80	0.00	608.80	0.00	0.00	608.80	608.80
Dexter Residence	Morristown	13,347.72	1,188.83	14,536.55	0.00	0.00	14,536.55	14,536.55
Godfrey Apartment Building	Morristown	4,915.10	0.00	4,915.10	0.00	2,540.14	7,455.24	7,455.24
Bornemann & Greene Machine Shop	Morristown	6,457.21	0.00	6,457.21	0.00	30,676.10	37,133.31	37,133.31
Bornemann & Greene Machine Shop	Morristown	0.00	0.00	0.00	1,154.15	0.00	0.00	1,154.15
Goddard Residence	Morristown	0.00	0.00	0.00	0.00	5,380.78	5,380.78	5,380.78
Bender Apartment Building	Morristown	6,223.15	0.00	6,223.15	0.00	0.00	6,223.15	6,223.15
Belmont General Store	Mt Holly	15,138.36	0.00	15,138.36	0.00	311.50	15,449.86	15,449.86
Wilson Property	Mt Holly	10,340.25	0.00	10,340.25	0.00	0.00	10,340.25	10,340.25
DeGregorio Spill	Mt Holly	423.54	0.00	423.54	0.00	0.00	423.54	423.54
Dagenais Residence	New Haven	0.00	0.00	0.00	0.00	7,250.24	7,250.24	7,250.24
Stan Katz Residence	New Haven	0.00	0.00	0.00	0.00	19,800.55	19,800.55	19,800.55
New Haven Mills Spill	New Haven	7,180.79	0.00	7,180.79	0.00	0.00	7,180.79	7,180.79
Flynn Residence	Newfane	1,690.39	0.00	1,690.39	0.00	0.00	1,690.39	1,690.39
Flynn Residence	Newfane	23,035.85	0.00	23,035.85	0.00	0.00	23,035.85	23,035.85
Smokehouse	Newfane	36,551.24	0.00	36,551.24	0.00	0.00	36,551.24	36,551.24
Hamblett Residence	Newport	0.00	0.00	0.00	7,671.98	903.25	903.25	8,575.23
Collins Farm	Newport Town	1,883.50	0.00	1,883.50	0.00	0.00	1,883.50	1,883.50
Baldwin Spill	North Hero	23,969.08	0.00	23,969.08	0.00	820.00	24,789.08	24,789.08
Otto William Heise Trust Property	North Hero	5,847.75	0.00	5,847.75	0.00	0.00	5,847.75	5,847.75
Gillespie Fuels	Northfield	18,224.23	0.00	18,224.23	0.00	953.40	19,177.63	19,177.63
Eastman Residence	Northfield	25,166.84	0.00	25,166.84	0.00	0.00	25,166.84	25,166.84
Green Mountain Family Practice	Northfield	25,035.91	0.00	25,035.91	5,884.61	17,390.14	42,426.05	48,310.66

Attachment 3
Petroleum Cleanup Fund
Expenditures by Site Through October 2006
Heating Oil

PCF Site Name	Site Location	Motor Fuel Historical (through June 2004)			Fuel (current year's	Heating Fuel Historical	Total Historical	GRAND (1) TOTAL
		Prior Years Remediation	Prior Years 3rd Party	Prior Years Total	Current Year Total Remediation	Prior Years Total HF Remediation	Prior Years Total MF & PY Total HF	
Former Mandlekorn Residence	Northfield	0.00	0.00	0.00	0.00	4,629.81	4,629.81	4,629.81
Norwich Universtiy	Northfield	0.00	0.00	0.00	677.30	0.00	0.00	677.30
Guest House	Northfield	5,957.73	0.00	5,957.73	0.00	0.00	5,957.73	5,957.73
Staab Residence	Northfield	0.00	0.00	0.00	0.00	7,405.40	7,405.40	7,405.40
Roy Crum Farm	Norton	5,720.70	0.00	5,720.70	0.00	0.00	5,720.70	5,720.70
Poisson Residence	Norwich	0.00	0.00	0.00	23,003.51	9,813.21	9,813.21	32,816.72
Guest Property	Norwich	956.50	0.00	956.50	0.00	0.00	956.50	956.50
Gleason Residence	Orleans	0.00	0.00	0.00	483.10	1,671.29	1,671.29	2,154.39
Almeida Residence	Orwell	0.00	0.00	0.00	0.00	8,974.85	8,974.85	8,974.85
Rob Blaine Residence	Pawlet	0.00	0.00	0.00	1,096.95	23,414.25	23,414.25	24,511.20
Parrish Residence	Peru	6,322.86	0.00	6,322.86	0.00	0.00	6,322.86	6,322.86
Alvarez Residence	Pittsfield	0.00	0.00	0.00	0.00	5,798.90	5,798.90	5,798.90
Harvie Residence	Pittsford	6,250.01	0.00	6,250.01	0.00	0.00	6,250.01	6,250.01
Goodard College Community Center	Plainfield	0.00	0.00	0.00	0.00	7,915.29	7,915.29	7,915.29
Parmenter Property	Plainfield	0.00	0.00	0.00	0.00	7,432.00	7,432.00	7,432.00
Brook Rd House	Plainfield	0.00	0.00	0.00	0.00	6,929.70	6,929.70	6,929.70
Nelson Residence	Plainfield	25,000.00	0.00	25,000.00	0.00	0.00	25,000.00	25,000.00
North Pomfret Gen'l Store	Pomfret	10,011.66	0.00	10,011.66	0.00	0.00	10,011.66	10,011.66
Teago Store	Pomfret	16,745.74	0.00	16,745.74	0.00	0.00	16,745.74	16,745.74
Judge Residence	Pomfret	0.00	0.00	0.00	0.00	1,707.47	1,707.47	1,707.47
Green Mountain College	Poultney	0.00	0.00	0.00	0.00	129,697.21	129,697.21	129,697.21
Green Mountain College	Poultney	0.00	0.00	0.00	39,799.00	0.00	0.00	39,799.00
Bixby's	Poultney	25,000.00	0.00	25,000.00	0.00	0.00	25,000.00	25,000.00
Staco / Chase	Poultney	1,992.76	0.00	1,992.76	0.00	0.00	1,992.76	1,992.76
Tovani Residence	Pownal	0.00	0.00	0.00	1,635.44	4,606.41	4,606.41	6,241.85
29 Main Street	Pownal	22,587.62	0.00	22,587.62	0.00	0.00	22,587.62	22,587.62
Evergreen Trailer Park	Pownal	12,372.25	0.00	12,372.25	0.00	0.00	12,372.25	12,372.25
Proctor High School	Proctor	262,041.10	0.00	262,041.10	972.54	7,364.46	269,405.56	270,378.10
Capen Residence	Proctor	0.00	0.00	0.00	0.00	6,594.65	6,594.65	6,594.65
Former Welch Property	Proctor	13,259.89	0.00	13,259.89	0.00	0.00	13,259.89	13,259.89
Brookside Campground	Putney	0.00	0.00	0.00	0.00	18,442.92	18,442.92	18,442.92
Simmonds Residence	Putney	1,223.30	5,897.23	7,120.53	1,464.60	15,763.70	22,884.23	24,348.83
Former Stagecoach Transp	Randolph	7,504.81	0.00	7,504.81	0.00	1,035.78	8,540.59	8,540.59
Lawrence Camp Property	Randolph	0.00	0.00	0.00	0.00	24,777.01	24,777.01	24,777.01
Backus Residence	Randolph	0.00	0.00	0.00	0.00	11,317.65	11,317.65	11,317.65
Ellis Residence	Reading	5,029.64	0.00	5,029.64	600.00	0.00	5,029.64	5,629.64
Passman Residence	Richford	3,225.25	0.00	3,225.25	0.00	0.00	3,225.25	3,225.25
Conner Residence	Richford	0.00	0.00	0.00	0.00	12,529.00	12,529.00	12,529.00
Mayville Residence	Richmond	10,033.43	0.00	10,033.43	1,699.89	288.50	10,321.93	12,021.82
Richmond Dental	Richmond	0.00	0.00	0.00	0.00	6,300.49	6,300.49	6,300.49
Andrews Residence	Richmond	0.00	0.00	0.00	16,629.42	0.00	0.00	16,629.42
Wilber Residence	Rochester	0.00	0.00	0.00	3,186.00	12,261.99	12,261.99	15,447.99
Shari Pulitano Residence	Rockingham	0.00	0.00	0.00	0.00	20,817.66	20,817.66	20,817.66
Symancyk Residence	Royalton	9,730.14	0.00	9,730.14	0.00	0.00	9,730.14	9,730.14
Trolley Barn	Rutland	0.00	0.00	0.00	22,177.30	0.00	0.00	22,177.30
Ramada Inn	Rutland City	3,796.36	0.00	3,796.36	814.33	1,831.44	5,627.80	6,442.13
First Vermont Bank	Rutland City	109,096.66	0.00	109,096.66	2,446.87	13,598.00	122,694.66	125,141.53
Rutland Masonic Temple	Rutland City	18,616.62	0.00	18,616.62	1,033.82	1,669.30	20,285.92	21,319.74
Pray Residence	Rutland City	0.00	0.00	0.00	0.00	4,837.16	4,837.16	4,837.16
Smart Property	Rutland City	0.00	0.00	0.00	0.00	8,219.26	8,219.26	8,219.26
Regency Manor	Rutland City	0.00	0.00	0.00	4,365.81	18,389.46	18,389.46	22,755.27
Hammliton Residence	Rutland City	0.00	0.00	0.00	605.00	8,338.78	8,338.78	8,943.78
Crossman Residence	Rutland City	14,342.15	0.00	14,342.15	0.00	0.00	14,342.15	14,342.15
Wolvorn Residence	Rutland City	0.00	0.00	0.00	0.00	21,940.12	21,940.12	21,940.12
Mary Hall Residence	Rutland City	0.00	0.00	0.00	150.50	12,370.00	12,370.00	12,520.50
Lacroix Property	Rutland City	0.00	0.00	0.00	558.46	2,523.35	2,523.35	3,081.81
Bisson Property	Rutland City	5,839.50	0.00	5,839.50	0.00	0.00	5,839.50	5,839.50
Blanchard Residence	Rutland City	598.99	0.00	598.99	0.00	0.00	598.99	598.99
Kupferer & Martin Prop	Rutland City	8,583.50	0.00	8,583.50	0.00	0.00	8,583.50	8,583.50
Springer Residence	Rutland Town	25,000.00	0.00	25,000.00	0.00	0.00	25,000.00	25,000.00
Davidson Residence	Ryegate	4,464.73	0.00	4,464.73	0.00	0.00	4,464.73	4,464.73
Laplaca Residence	Shaftsbury	23,483.98	0.00	23,483.98	0.00	0.00	23,483.98	23,483.98
Berkeley Residence	Shaftsbury	0.00	0.00	0.00	0.00	7,090.32	7,090.32	7,090.32
Mance Residence	Shaftsbury	6,733.78	0.00	6,733.78	0.00	0.00	6,733.78	6,733.78
Blakeman's Residence	Sharon	5,689.51	0.00	5,689.51	0.00	0.00	5,689.51	5,689.51
Shelburne Corporation	Shelburne	104,251.10	0.00	104,251.10	202.20	6,412.82	110,663.92	110,866.12
Shelburn Water Line	Shelburne	0.00	0.00	0.00	20,584.40	0.00	0.00	20,584.40
Shelburne Water Line	Shelburne	0.00	0.00	0.00	266.95	0.00	0.00	266.95
Crone Residence	Shelburne	0.00	0.00	0.00	0.00	4,892.80	4,892.80	4,892.80
Babbot Residence	Shelburne	0.00	0.00	0.00	2,876.55	0.00	0.00	2,876.55
Abel-Palmer Residence	Shelburne	6,522.74	0.00	6,522.74	0.00	0.00	6,522.74	6,522.74
Deutscher Residence	Shelburne	2,898.00	0.00	2,898.00	0.00	0.00	2,898.00	2,898.00
Murray Residence	Shelburne	2,027.00	0.00	2,027.00	0.00	0.00	2,027.00	2,027.00
Phyllis LaCoste Spill	Sheldon	7,588.30	0.00	7,588.30	0.00	0.00	7,588.30	7,588.30
University Inn	South Burlington	500.43	0.00	500.43	634.92	1,669.63	2,170.06	2,804.98
Rocheleau Residence	South Burlington	159,090.88	139.00	159,229.88	0.00	1,126.50	160,356.38	160,356.38
Szczerbak Residence	South Burlington	0.00	0.00	0.00	0.00	544.20	544.20	544.20
Whitmore Property	South Burlington	5,129.28	0.00	5,129.28	0.00	2,047.50	7,176.78	7,176.78

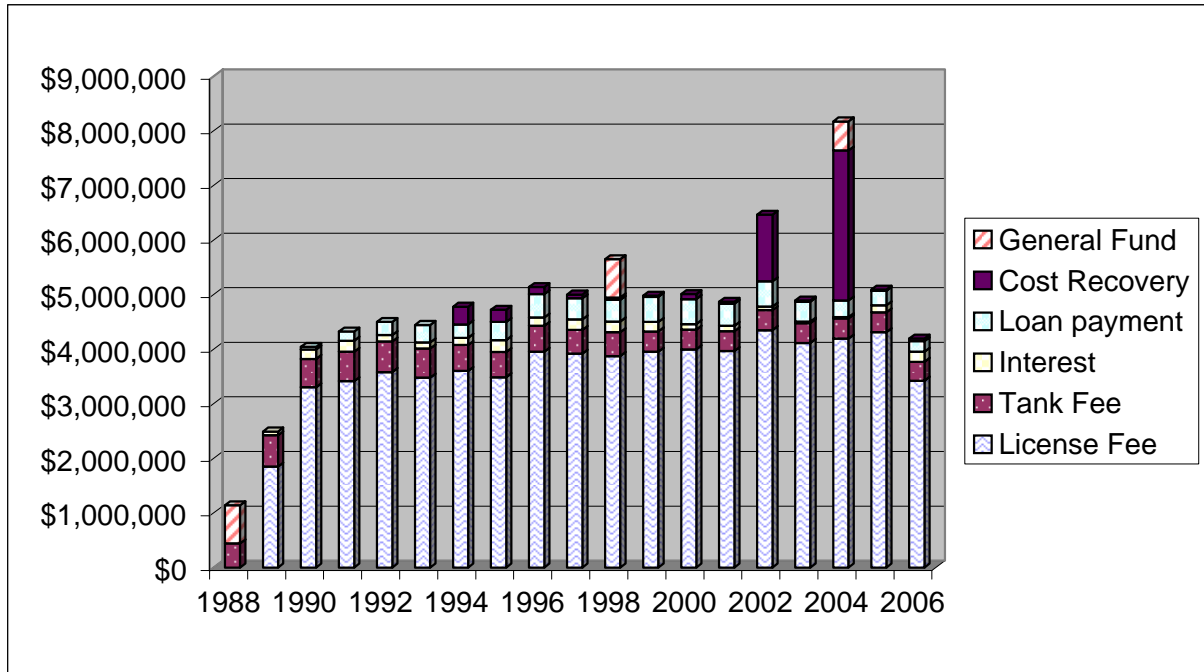
Attachment 3
Petroleum Cleanup Fund
Expenditures by Site Through October 2006
Heating Oil

PCF Site Name	Site Location	Motor Fuel Historical (through June 2004)			Fuel (current year's	Heating Fuel Historical	Total Historical	GRAND (1) TOTAL
		Prior Years Remediation	Prior Years 3rd Party	Prior Years Total	Current Year Total Remediation	Prior Years Total HF Remediation	Prior Years Total MF & PY Total HF	
Lawler Residence	South Burlington	0.00	0.00	0.00	0.00	750.00	750.00	750.00
Alco Equipment	South Burlington	85,863.43	0.00	85,863.43	0.00	0.00	85,863.43	85,863.43
Handy's Twnhse Motel	South Burlington	2,937.83	0.00	2,937.83	0.00	0.00	2,937.83	2,937.83
Mason Residence	South Burlington	3,623.75	0.00	3,623.75	0.00	0.00	3,623.75	3,623.75
Merrill Residence	South Burlington	15,054.83	0.00	15,054.83	0.00	0.00	15,054.83	15,054.83
Sherwin Williams Plaza	South Burlington	21,835.87	9.85	21,845.72	0.00	0.00	21,845.72	21,845.72
Summers Residence	South Hero	0.00	0.00	0.00	0.00	3,161.61	3,161.61	3,161.61
Fay Residence	South Hero	0.00	0.00	0.00	0.00	5,658.47	5,658.47	5,658.47
West Residence	South Hero	1,698.10	0.00	1,698.10	0.00	0.00	1,698.10	1,698.10
Jones & Lampson	Springfield	0.00	0.00	0.00	766.96	0.00	0.00	766.96
22 Autumn Street	Springfield	2,444.37	0.00	2,444.37	0.00	0.00	2,444.37	2,444.37
Harmer Residence	Springfield	9,949.72	0.00	9,949.72	0.00	3,715.12	13,664.84	13,664.84
Thompson Residence	Springfield	0.00	0.00	0.00	0.00	7,002.18	7,002.18	7,002.18
Windy Hill Acres	Springfield	996.42	0.00	996.42	0.00	0.00	996.42	996.42
Bosley Residence	Springfield	764.50	0.00	764.50	0.00	6,370.13	7,134.63	7,134.63
Johnson Property	Springfield	0.00	0.00	0.00	0.00	3,780.95	3,780.95	3,780.95
Bartley Property	Springfield	0.00	0.00	0.00	9,865.75	0.00	0.00	9,865.75
Springfield Humane Soc	Springfield	16,426.63	0.00	16,426.63	0.00	0.00	16,426.63	16,426.63
Dowling Warehouse	St Albans City	0.00	0.00	0.00	0.00	4,545.95	4,545.95	4,545.95
Harrison Residence	St Albans City	0.00	0.00	0.00	0.00	6,814.54	6,814.54	6,814.54
Gagne Residence	St Albans City	0.00	0.00	0.00	8,251.88	19,918.12	19,918.12	28,170.00
Gibson Residence	St Albans City	0.00	0.00	0.00	0.00	11,112.01	11,112.01	11,112.01
Grand Union Plaza	St Albans City	0.00	0.00	0.00	1,583.50	0.00	0.00	1,583.50
Dutkiewicz Residence	St Albans City	0.00	0.00	0.00	5,779.00	0.00	0.00	5,779.00
Desrochers Residence	St Albans City	0.00	0.00	0.00	20,159.12	0.00	0.00	20,159.12
Jim Smith Residence	St Albans City	2,251.01	0.00	2,251.01	0.00	0.00	2,251.01	2,251.01
Hobbs Residence	St Albans City	0.00	0.00	0.00	0.00	7,447.21	7,447.21	7,447.21
Former Sears Building	St Johnsbury	15,010.35	0.00	15,010.35	0.00	1,261.08	16,271.43	16,271.43
Carlet, Gilson & Harley	St Johnsbury	29,238.49	0.00	29,238.49	0.00	0.00	29,238.49	29,238.49
Mary Scott Spill	St Johnsbury	2,343.65	0.00	2,343.65	0.00	0.00	2,343.65	2,343.65
Lebel Residence	St. Albans	0.00	0.00	0.00	252.00	0.00	0.00	252.00
Grace United Methodist Church	St. Johnsbury	0.00	0.00	0.00	43,976.58	0.00	0.00	43,976.58
Rheaume Residence	Starksboro	15,285.98	0.00	15,285.98	0.00	382.27	15,668.25	15,668.25
Michaud Residence	Starksboro	2,086.99	0.00	2,086.99	0.00	15,174.82	17,261.81	17,261.81
Keith Smiel Residence	Starksboro	25,489.25	0.00	25,489.25	0.00	0.00	25,489.25	25,489.25
Pecor Residence	Starksboro	3,687.50	0.00	3,687.50	0.00	900.50	4,588.00	4,588.00
Kamencick Property	Starksboro	0.00	0.00	0.00	662.55	23,403.02	23,403.02	24,065.57
Sweet & Burt Facility	Stowe	0.00	0.00	0.00	1,833.63	6,696.50	6,696.50	8,530.13
Moran Residence	Stowe	23,781.87	1,200.28	24,982.15	0.00	0.00	24,982.15	24,982.15
Stoneybrook Condos	Stowe	0.00	0.00	0.00	654.07	5,202.48	5,202.48	5,856.55
Sungardens	Stowe	9,034.01	0.00	9,034.01	0.00	0.00	9,034.01	9,034.01
Griffith Residence	Stowe	0.00	0.00	0.00	234.14	0.00	0.00	234.14
Garret Residence	Stowe	956.35	0.00	956.35	0.00	0.00	956.35	956.35
Miller Residence	Stowe	0.00	0.00	0.00	0.00	3,093.01	3,093.01	3,093.01
Davis Residence	Stowe	0.00	0.00	0.00	0.00	5,017.15	5,017.15	5,017.15
Grant Residence	Stowe	0.00	0.00	0.00	0.00	14,597.18	14,597.18	14,597.18
Bouramia Residence	Stowe	0.00	0.00	0.00	0.00	6,494.47	6,494.47	6,494.47
Bensley Residence	Stowe	0.00	0.00	0.00	0.00	1,917.70	1,917.70	1,917.70
Dunn Residence	Stowe	0.00	0.00	0.00	0.00	1,827.45	1,827.45	1,827.45
Ten Acres Lodge	Stowe	0.00	0.00	0.00	996.74	6,325.09	6,325.09	7,321.83
Winchell Residence	Stowe	0.00	0.00	0.00	7,882.96	0.00	0.00	7,882.96
Mountain Rd Resort	Stowe	0.00	0.00	0.00	0.00	6,729.10	6,729.10	6,729.10
Haslam Residence	Stowe	0.00	0.00	0.00	0.00	4,359.49	4,359.49	4,359.49
Hall Property	Stowe	0.00	0.00	0.00	5,346.80	0.00	0.00	5,346.80
Comey Residence	Stowe	0.00	0.00	0.00	5,724.91	0.00	0.00	5,724.91
Fagan Residence	Stowe	0.00	0.00	0.00	0.00	1,219.84	1,219.84	1,219.84
Rauch Residence	Stowe	0.00	0.00	0.00	2,954.76	0.00	0.00	2,954.76
Napolitano Residence	Stowe	0.00	0.00	0.00	9,912.78	0.00	0.00	9,912.78
Partridge Residence	Stowe	4,442.25	0.00	4,442.25	0.00	0.00	4,442.25	4,442.25
Dann Residence	Stowe	36,933.64	0.00	36,933.64	0.00	0.00	36,933.64	36,933.64
Golden Eagle Resort	Stowe	6,874.76	0.00	6,874.76	0.00	0.00	6,874.76	6,874.76
John Henzel Residence	Stowe	24,801.14	0.00	24,801.14	0.00	0.00	24,801.14	24,801.14
Delfino Residence	Strafford	0.00	0.00	0.00	6,740.06	12,541.89	12,541.89	19,281.95
Brick Store	Strafford	4,293.88	0.00	4,293.88	0.00	0.00	4,293.88	4,293.88
Gramling Residence	Strafford	558.38	0.00	558.38	0.00	0.00	558.38	558.38
Stratton Mountain Corp.	Stratton	21,140.34	0.00	21,140.34	0.00	0.00	21,140.34	21,140.34
Sudbury Town Hall	Sudbury	21,822.82	0.00	21,822.82	0.00	0.00	21,822.82	21,822.82
Bacon Residence	Sunderland	0.00	0.00	0.00	0.00	470.93	470.93	470.93
Moore Residence	Sunderland	0.00	0.00	0.00	6,316.93	0.00	0.00	6,316.93
12 Lake Street	Swanton	3,767.23	0.00	3,767.23	0.00	0.00	3,767.23	3,767.23
Dulude Property	Swanton	0.00	0.00	0.00	0.00	0.00	0.00	0.00
Lake Champlain	Swanton	0.00	0.00	0.00	600.00	0.00	0.00	600.00
Flaherty Residence	Thetford	0.00	0.00	0.00	0.00	24,735.02	24,735.02	24,735.02
Sanborn Property	Thetford	2,729.14	0.00	2,729.14	0.00	0.00	2,729.14	2,729.14
Topsham Telephone Company	Topsham	0.00	0.00	0.00	1,450.00	0.00	0.00	1,450.00
Howes Residence	Topsham	0.00	0.00	0.00	0.00	6,476.57	6,476.57	6,476.57
Elisa Howes Residence	Topsham	0.00	0.00	0.00	0.00	4,884.74	4,884.74	4,884.74

Attachment 3
Petroleum Cleanup Fund
Expenditures by Site Through October 2006
Heating Oil

PCF Site Name	Site Location	Motor Fuel Historical (through June 2004)			Fuel (current year's	Heating Fuel Historical	Total Historical	GRAND (1) TOTAL
		Prior Years Remediation	Prior Years 3rd Party	Prior Years Total	Current Year Total Remediation	Prior Years Total HF Remediation	Prior Years Total MF & PY Total HF	
Conlin Property	Townshend	879.92	0.00	879.92	0.00	0.00	879.92	879.92
Yeskoo Residence	Troy	1,214.70	0.00	1,214.70	0.00	23,535.30	24,750.00	24,750.00
Charlotte Cote Property	Troy	958.80	0.00	958.80	0.00	0.00	958.80	958.80
Sporn Residence	Turnbridge	0.00	0.00	0.00	0.00	1,409.94	1,409.94	1,409.94
Norton Residence	Underhill	0.00	0.00	0.00	0.00	25,000.00	25,000.00	25,000.00
Cilly Hill Road	Underhill	5,585.25	0.00	5,585.25	0.00	0.00	5,585.25	5,585.25
Assembly of God Ctr	Vergennes	5,107.52	0.00	5,107.52	0.00	0.00	5,107.52	5,107.52
Former Hannahs Market	Vergennes	7,809.59	0.00	7,809.59	121.25	2,455.85	10,265.44	10,386.69
Colin Nichols Apartment	Vershire	0.00	0.00	0.00	5,797.75	13,391.92	13,391.92	19,189.67
Wait Farm Inn	Waitsfield	22,415.78	0.00	22,415.78	3,375.00	0.00	22,415.78	25,790.78
Arace Residence	Waitsfield	0.00	0.00	0.00	9,512.06	0.00	0.00	9,512.06
Bridge Street	Waitsfield	0.00	0.00	0.00	0.00	0.00	0.00	0.00
Fuiks Residence	Wardsboro	0.00	0.00	0.00	0.00	2,309.05	2,309.05	2,309.05
Wortman Residence	Warren	3,486.92	4,497.23	7,984.15	0.00	17,015.85	25,000.00	25,000.00
Byrne Property	Warren	0.00	0.00	0.00	0.00	7,278.29	7,278.29	7,278.29
Powderhound Inn	Warren	0.00	0.00	0.00	4,153.39	0.00	0.00	4,153.39
Ambriano Property	Warren	0.00	0.00	0.00	9,646.84	0.00	0.00	9,646.84
Bodell Fisher Property	Warren	0.00	0.00	0.00	11,576.02	0.00	0.00	11,576.02
Bush Residence	Warren	0.00	0.00	0.00	0.00	0.00	0.00	0.00
Ward Residence	Warren	0.00	0.00	0.00	6,933.30	0.00	0.00	6,933.30
Vare Real Estate	Warren	12,243.15	0.00	12,243.15	0.00	0.00	12,243.15	12,243.15
Henrikson Residence	Washington	8,527.30	0.00	8,527.30	0.00	0.00	8,527.30	8,527.30
Fuller Property	Waterbury	15,867.52	0.00	15,867.52	0.00	0.00	15,867.52	15,867.52
Burt Residence	Waterbury	0.00	0.00	0.00	346.56	0.00	0.00	346.56
Judevine Farm	Waterville	0.00	0.00	0.00	23,390.50	0.00	0.00	23,390.50
Exit 8 Mobil	Weathersfield	312,788.20	0.00	312,788.20	0.00	1,497.91	314,286.11	314,286.11
Koerner Residence	West Windsor	103,909.68	4,835.60	108,745.28	0.00	114.53	108,859.81	108,859.81
Brown Farm	West Windsor	6,258.16	39.55	6,297.71	0.00	0.00	6,297.71	6,297.71
Berry Creek Farm	Westfield	0.00	0.00	0.00	73.16	24,597.43	24,597.43	24,670.59
LaFountain Residence	Westford	3,772.53	1,278.76	5,051.29	0.00	0.00	5,051.29	5,051.29
Westford School	Westford	513.45	0.00	513.45	0.00	0.00	513.45	513.45
Young Residence	Westminster	4,583.12	0.00	4,583.12	0.00	0.00	4,583.12	4,583.12
Ina Beck Res	Westminster	0.00	0.00	0.00	0.00	21,558.93	21,558.93	21,558.93
Decell Residence	Weston	7,111.08	105.10	7,216.18	13,589.22	651.80	7,867.98	21,457.20
Farrer Residence	Weston	0.00	0.00	0.00	0.00	531.00	531.00	531.00
MacNellis Residence	Weston	4,469.38	0.00	4,469.38	0.00	0.00	4,469.38	4,469.38
Weston Post Office	Weston	45,387.19	0.00	45,387.19	0.00	0.00	45,387.19	45,387.19
Whatson Residence	Whitingham	270.50	0.00	270.50	0.00	0.00	270.50	270.50
Church of the Nazarene	Williston	0.00	0.00	0.00	1,508.80	3,828.89	3,828.89	5,337.69
Trombley Residence	Williston	0.00	0.00	0.00	4,644.48	3,256.22	3,256.22	7,900.70
Christ Memorial Church	Williston	0.00	0.00	0.00	6,311.15	0.00	0.00	6,311.15
Carpenter Residence	Williston	0.00	0.00	0.00	739.30	6,259.03	6,259.03	6,998.33
Alden Bryan	Williston	1,616.43	0.00	1,616.43	0.00	0.00	1,616.43	1,616.43
Raymond Residence	Williston	4,491.38	0.00	4,491.38	0.00	0.00	4,491.38	4,491.38
O'Brien Farm	Williston	112,426.11	0.00	112,426.11	0.00	0.00	112,426.11	112,426.11
Gaszek Residence	Wilmington	0.00	0.00	0.00	2,428.21	0.00	0.00	2,428.21
Old Windsor Village	Windsor	44,838.76	0.00	44,838.76	3,261.26	3,007.66	47,846.42	51,107.68
Lemire Property	Windsor	16,209.78	0.00	16,209.78	0.00	1,816.83	18,026.61	18,026.61
Armory Square Apartments	Windsor	11,209.52	0.00	11,209.52	0.00	0.00	11,209.52	11,209.52
Gibbs Residence	Windsor	0.00	5,075.00	5,075.00	0.00	0.00	5,075.00	5,075.00
Goodrow Residence	Windsor	3,221.23	0.00	3,221.23	0.00	0.00	3,221.23	3,221.23
Rubenstein Residence	Winhall	0.00	0.00	0.00	1,764.82	0.00	0.00	1,764.82
Intervale Condo Owners	Winhall	0.00	0.00	0.00	0.00	1,563.30	1,563.30	1,563.30
William Brett Property	Winhall	0.00	0.00	0.00	12,091.44	0.00	0.00	12,091.44
Wiggin's Concrete	Winooski	3,094.86	0.00	3,094.86	0.00	0.00	3,094.86	3,094.86
Woodstock Elementary	Woodstock	0.00	0.00	0.00	3,048.41	0.00	0.00	3,048.41
Hathorn Hills	Woodstock	23,470.12	0.00	23,470.12	0.00	511.64	23,981.76	23,981.76
Blake Hill Condos	Woodstock	36,662.14	0.00	36,662.14	0.00	1,981.79	38,643.93	38,643.93
Grew Residence	Woodstock	5,575.60	0.00	5,575.60	0.00	585.00	6,160.60	6,160.60
Alicia Patterson Estate	Woodstock	1,451.10	0.00	1,451.10	0.00	0.00	1,451.10	1,451.10
Billings Residence	Woodstock	1,995.18	0.00	1,995.18	0.00	0.00	1,995.18	1,995.18
Former Cabot Building	Woodstock	10,800.90	0.00	10,800.90	0.00	0.00	10,800.90	10,800.90
Gordon Clow	Woodstock	5,493.92	0.00	5,493.92	0.00	0.00	5,493.92	5,493.92
Administrative Adjustments		88,760.79	0.00	88,760.79	7,214.29	0.00	88,760.79	95,975.08
UST Residential Grants-AST		0.00	0.00	0.00	58,884.56	89,582.59	89,582.59	148,467.15
UST Residential Grants-UST		295,551.95	0.00	295,551.95	13,000.00	161,051.62	456,603.57	469,603.57
Administrative Adjustments		(33,607.38)	0.00	(33,607.38)	0.00	0.00	(33,607.38)	(33,607.38)
TOTAL EXPENSE		5,453,618.71	109,203.35	5,562,822.06	1,002,842.24	2,244,328.20	7,773,542.88	8,776,385.12
		0.00	0.00	0.00	0.00	0.00	0.00	0.00

Attachment 4 Annual PCF Income

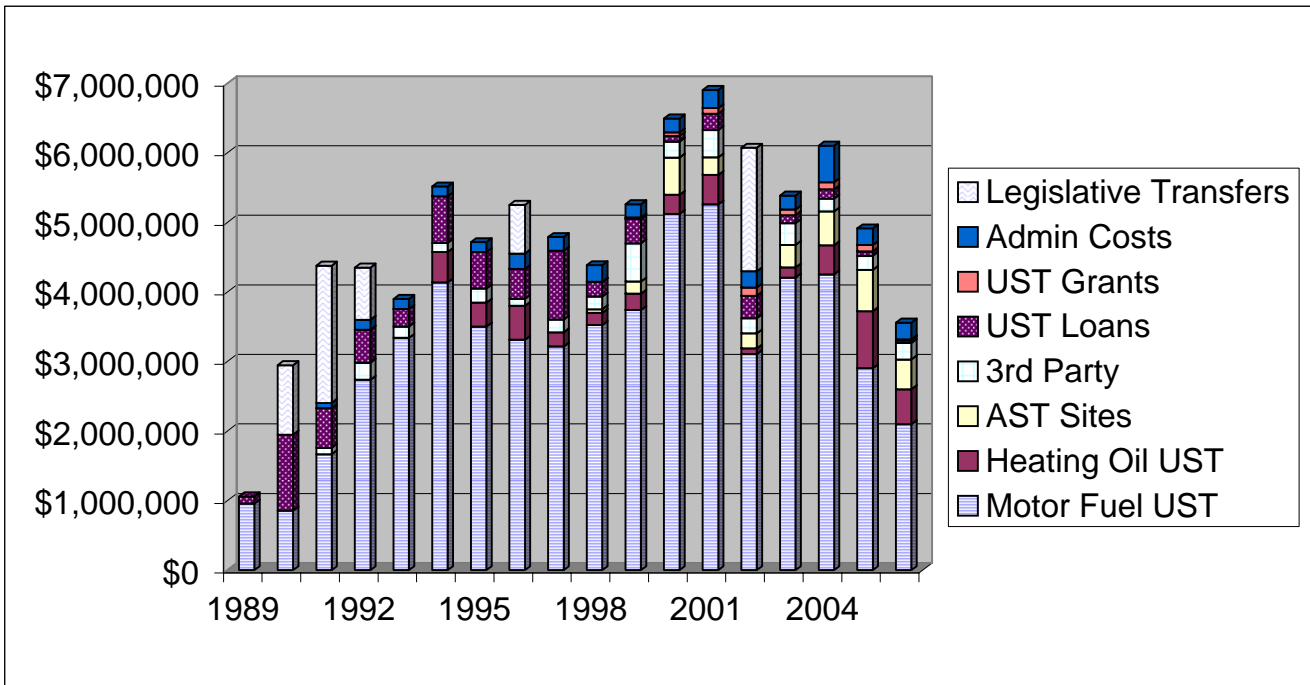


Year	License Fee	Tank Fee	Interest	Loan payment	Heating Oil Fee	Cost Recovery	General Fund
1988		\$441,300					\$700,000
1989	\$1,851,595	\$571,800	\$68,864				
1990	\$3,305,119	\$518,005	\$174,126	\$46,562			
1991	\$3,414,485	\$539,000	\$204,167	\$168,290			
1992	\$3,581,656	\$561,700	\$116,667	\$240,924			
1993	\$3,478,742	\$535,025	\$111,584	\$319,607			
1994	\$3,604,046	\$475,550	\$130,118	\$245,669		\$323,674	
1995	\$3,487,733	\$462,242	\$218,385	\$330,432		\$225,696	
1996	\$3,953,693	\$474,733	\$152,532	\$429,496		\$130,623	
1997	\$3,918,296	\$433,518	\$193,119	\$390,547		\$66,146	
1998	\$3,875,607	\$438,095	\$195,893	\$393,595		\$45,920	\$700,000
1999	\$3,955,898	\$370,543	\$175,642	\$458,178		\$19,555	
2000	\$3,999,099	\$361,870	\$101,228	\$457,173		\$92,687	
2001	\$3,967,028	\$361,308	\$103,062	\$400,964		\$36,332	
2002	\$4,351,115	\$366,134	\$62,461	\$464,577		\$1,221,789	
2003	\$4,115,480	\$364,060	\$26,111	\$366,651		\$21,650	
2004	\$4,194,500	\$371,130	\$23,111	\$304,680	\$92,930	\$2,750,216	\$530,000
2005	\$4,312,855	\$365,135	\$124,872	\$268,794	\$930,367	\$19,664	
2006	\$3,424,016	\$346,608	\$183,389	\$196,208	\$703,269	\$46,727	
Total	\$66,790,963	\$8,357,756	\$2,365,331	\$5,482,347	\$1,726,566	\$5,000,679	\$1,930,000

2006 includes January - October

updated on 1/2/2007

Attachment 5 Annual Petroleum Cleanup Fund Expenses



Year	Motor Fuel UST	Heating Oil UST	AST Sites	3rd Party	UST Loans	UST Grants	AST Grants	Admin Costs	Legislative Transfers
1989	\$954,767				\$104,725				
1990	\$854,456				\$1,091,742				\$1,000,000
1991	\$1,667,352			\$91,356	\$568,875			\$75,000	\$1,975,000
1992	\$2,735,743			\$246,653	\$473,567			\$142,500	\$750,000
1993	\$3,338,482			\$163,207	\$254,550			\$142,500	
1994	\$4,134,140	\$440,183		\$128,579	\$669,144			\$142,500	
1995	\$3,500,732	\$345,593		\$201,995	\$524,100			\$142,500	
1996	\$3,310,563	\$488,150		\$102,564	\$428,431			\$221,950	\$700,000
1997	\$3,214,204	\$204,487		\$183,473	\$989,125			\$197,098	
1998	\$3,522,001	\$178,370	\$50,914	\$180,275	\$208,740	\$6,412		\$237,612	
1999	\$3,738,822	\$236,022	\$173,746	\$548,796	\$349,800	\$20,600		\$192,500	
2000	\$5,118,522	\$276,488	\$537,273	\$229,195	\$80,000	\$52,000		\$198,549	
2001	\$5,257,006	\$424,328	\$252,024	\$394,092	\$234,245	\$80,665		\$259,777	
2002	\$3,106,777	\$80,622	\$216,616	\$216,969	\$322,418	\$120,211		\$232,500	\$1,776,000
2003	\$4,207,188	\$144,035	\$323,845	\$313,835	\$114,170	\$79,860		\$200,000	
2004	\$4,252,202	\$418,133	\$485,945	\$184,517	\$132,596	\$103,268	\$13,234	\$525,000	
2005	\$2,903,051	\$818,975	\$595,411	\$201,811	\$64,591	\$88,852	\$76,349	\$240,000	
2006	\$2,097,041	\$504,056	\$426,902	\$237,606	\$40,000	\$13,000	\$58,885	\$240,000	
Total	\$57,913,049	\$4,559,442	\$3,062,676	\$3,624,923	\$6,650,819	\$564,868	\$58,885	\$3,389,986	\$6,201,000

2004 admin fee includes fee for FY04 & FY05

2006 includes January - October only

updated on 1/2/2007

Attachment 6				
Number of Sites with Affected Receptors from Petroleum Releases				
Year	Public Water Supply	Private Water Supplies	Surface Water	Indoor Air
1987	3	2	10	8
1988	1	2	10	2
1989	3	9	8	4
1990	3	9	16	4
1991	6	22	15	3
1992	2	14	15	2
1993	3	6	7	3
1994	1	8	8	3
1995	2	5	6	1
1996	6	11	17	20
1997	1	3	7	6
1998	1	3	8	4
1999	1	6	4	3
2000	0	10	6	6
2001	1	4	2	8
2002	4	9	8	10
2003	3	2	7	5
2004	1	8	13	8
2005	0	3	2	12
2006	3	11	10	8
Total	45	147	179	120

For each site with an affected receptor the number of actual Vermonters exposed to contamination can vary. The actual users for public water supplies can be as low as 25 people per system to as high as many thousands of users. For sites with affected private water supplies, the number of contaminated wells depends on the specific conditions of the site. On average there are approximately three contaminated wells discovered per site, with an average of 3 users per household. However, one of the 147 sites listed above involved contamination to over 80 wells affecting approximately 240 users, and a site discovered in 2002 involves contamination to over 30 wells, including a public water supply, affecting 100s of users. Sites with surface water impacts can affect both public health and the environment. High concentrations of petroleum in a stream can cause detrimental affects to biota, and lead to an increased exposure to stream users. Lastly, sites with indoor air impacts can lead to the greatest risk to public health. Petroleum vapors entering a home can be at levels that are explosive. More often petroleum vapors reach levels that pose a serious health risk. Of the 120 sites with indoor air impacts, the number of exposed individuals varied from site to site. An average site involves three homes affected with approximately three persons per home.

Sites that are discovered with contamination affecting a sensitive receptor requires immediate response. It is critical that the Petroleum Cleanup Fund maintain an adequate balance so that there are no delays in efforts to mitigate the serious public health and environmental presented at these sites.

Attachment 7

