

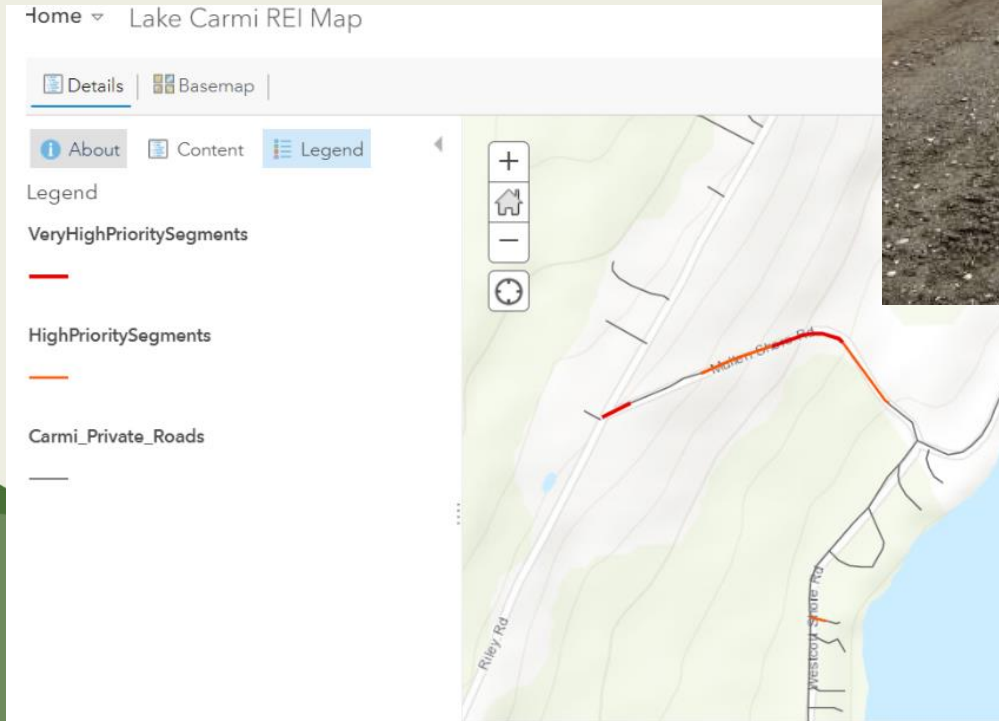
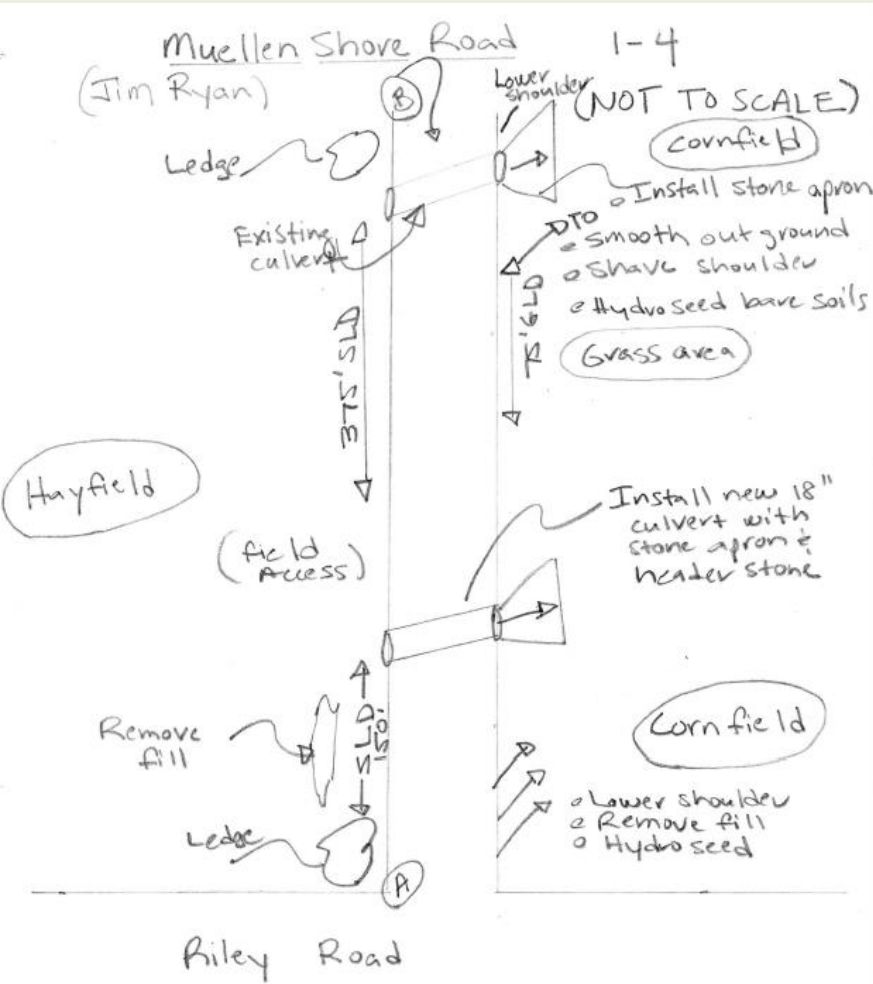
# Private road and formula grant funding update

## Clean Water Service Network Summit



**April 5<sup>th</sup> 2024**  
**Ben Copans -**  
***Watershed Planner***  
***Water Investment***  
***Division***

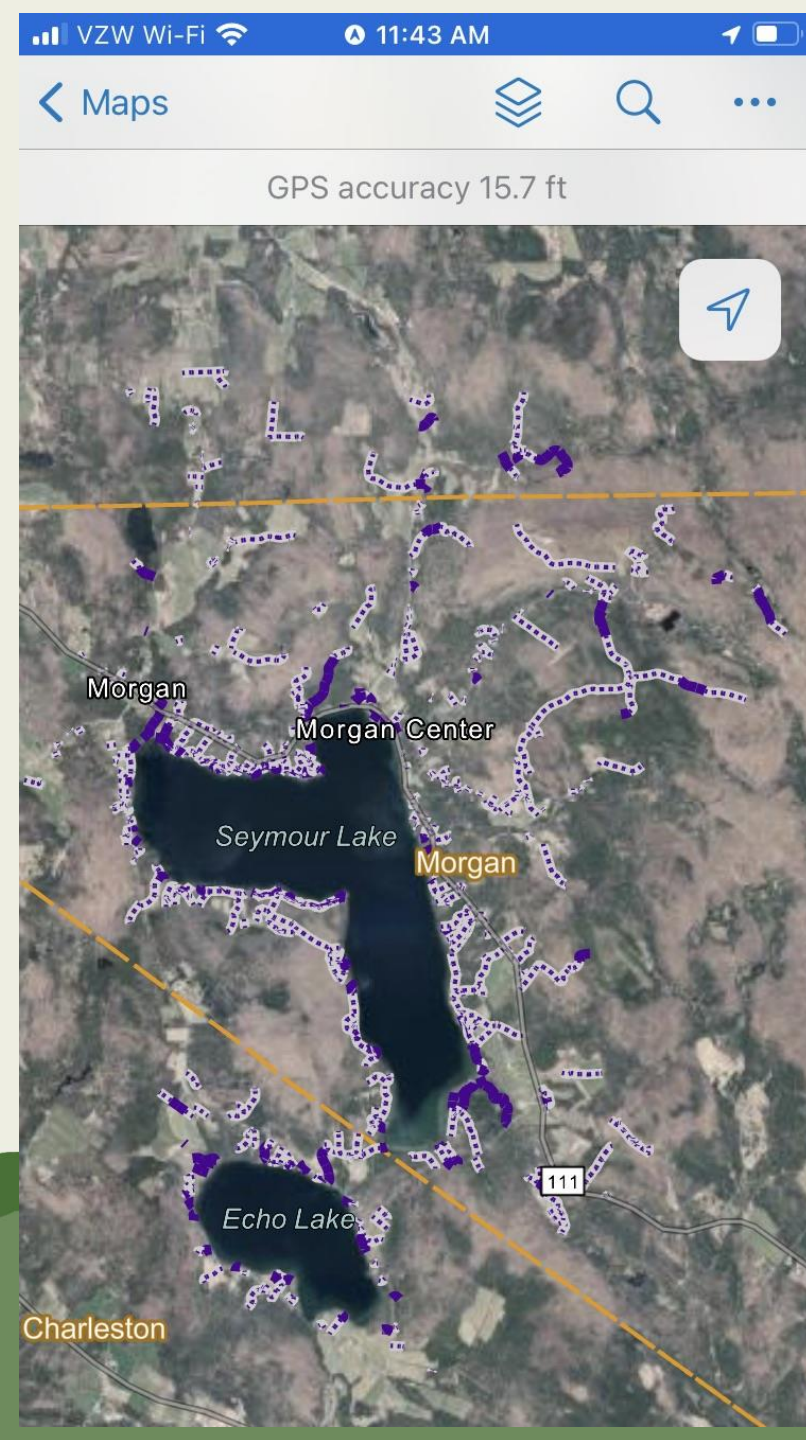
# Lake Carmi private road REI and implementation



o see VTrans Better Roads manual for practice details

- o SLD = stone lined ditch
- o GLD = Grass lined ditch
- o Distances are approximate only
- TO = turnout (Ledge may limit ditch depth)





Verizon 8:50 PM

Road Erosion Inventory

Road type \*

- Paved road with catch basin
- Paved road with open ditches
- Gravel road with open ditches

Number of travel lanes \*

- One lane
- Two lanes
- Unknown

Landowner type \*

- Single landowner
- Multiple landowner
- Unknown

Permission granted \*

- Yes
- No

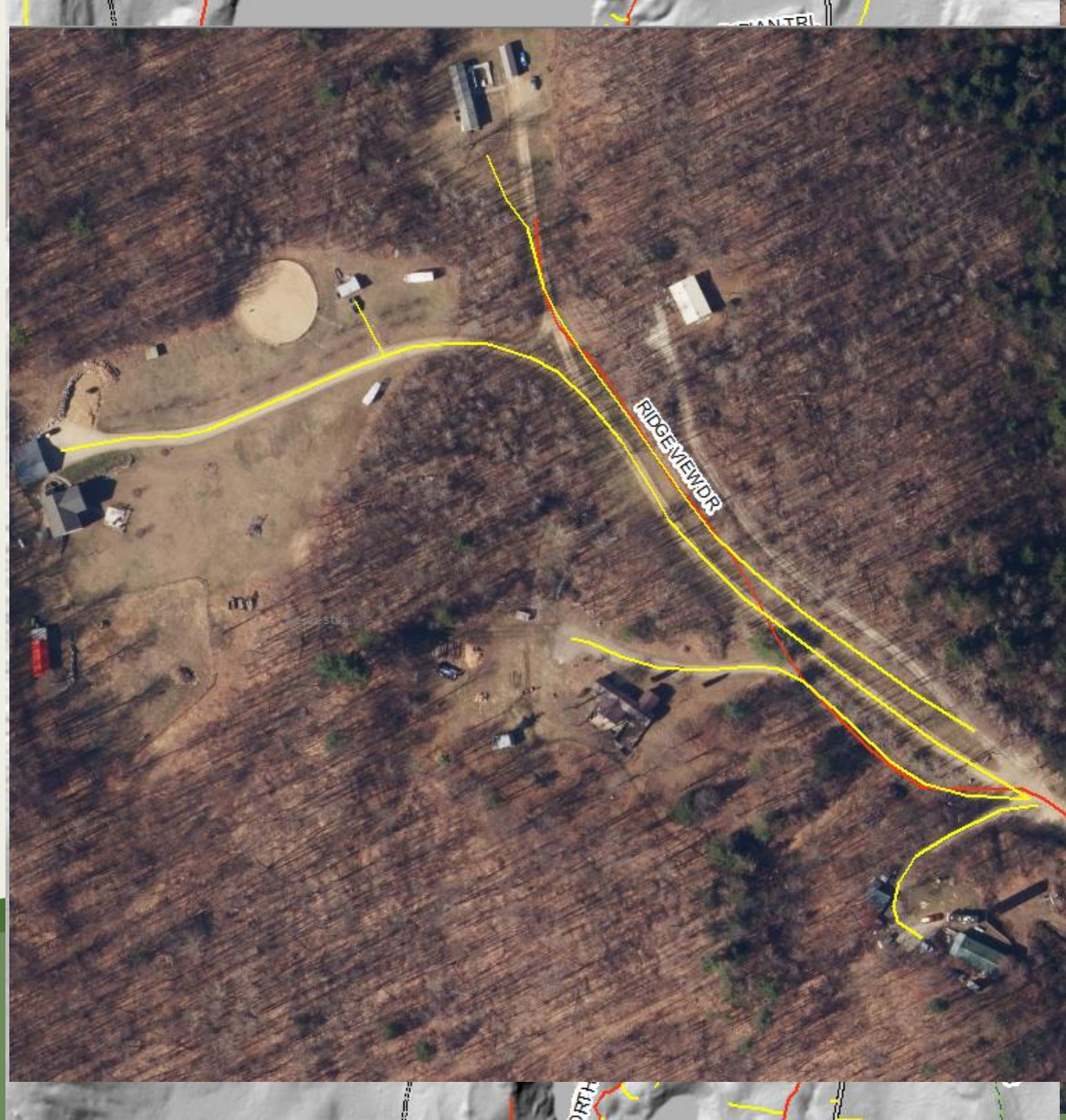
Capture / Browse representative photo

## Private roads REI app Development

- Based on Lake Carmi Private road assessment
- Draft REI App created for Echo Lake watershed based on E911 and Vtrans private roads.
- Same as updated MRGP app with additional questions specific to private roads
- Ininitially developed to support Lake Watersehd Action Plan private road assessments

# Private road REI development

- E911 driveway (yellow) and Vtrans private roads (red) are not as accurate or complete as municipal roads layers
- Private roads do not have culverts mapped, which were used in the hydro connected analysis for municipal roads.
- There are lots of small driveways that may not be a priority for assessment



# VT-DEC Private Roads Funding

- \$400K in funding from Lake Champlain Basin Program EPA dollars
- Support capacity building for private road REIs including:
  - Technical resource development
    - Including development of base map and refinement of the REI application
  - Technical assistance
    - Training and capacity building for partners to implement REIs
  - Funding Program
    - Entities complete private road REI's in Lake Champlain Basin
- RFP in development with a release date early summer 2024
  - There will be opportunities to ask questions as part of the RFP process

# Status of Private Roads funding

- Formula grants are not allowed to fund private road project ID while the private roads app and process are being finalized
- Groups will be encouraged to draw down LCBP block grant funds in the Lake Champlain Basin while these funds are available.
- Funding for private roads design and implementation is allowed under formula grants but phosphorus accounting SOPs require the use of the REI for pre and post assessments, and only hydrologically connected road segments are eligible.

# There is still a lot resolve...

- Funding and development of the mapping layers for private roads assessments in the Memph/Hudson/Connecticut River basins.
- Evaluating if there are practices that may be applicable for private roads but not MRGP
- Operations and maintenance for private roads

